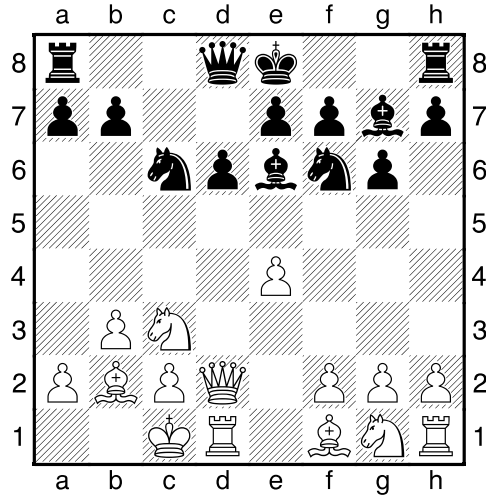


CHESS GAMES FROM 2021 KANSAS OPEN-OPEN SECTION

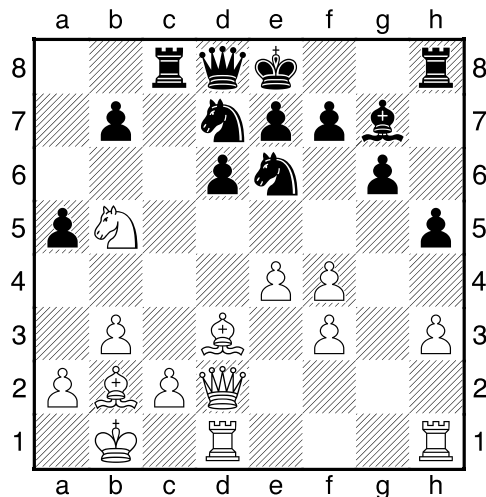
(1) Sheshappa,Sameeth (2010) – Tran,Luke (1999) [B23]

2021 Kansas Open- Open section (5), 19.07.2021

B23: Closed Sicilian: Lines without g3 **1.e4 c5 2.Nc3 d6 3.d4 cxd4 4.Qxd4 Nc6 last book move 5.Qd2 g6 6.b3 Bh6 7.Qd1 Bg7 8.Bb2 Be6 9.Qd2 Nf6 10.0-0-0** Diagram



10...h5?! [10...0-0 Slight advantage for black] 11.Kb1 Rc8 12.Bd3= a5 [12...Qa5=; 12...0-0=] 13.f4 Bg4 14.Nf3 Nd7 15.h3 Bxf3 16.gxf3 Nd4 17.Nb5 Ne6? Diagram



losing move [17...Qb6 18.Bxd4 Bxd4 19.Nxd4 Qxd4 20.Qxa5 advantage white +-(1.57); 17...Nxb5 better than 17...Ne6 though not as good as 17...Qb6 18.Bxg7 Rg8 19.Bb2 Na7 20.e5 +-(2.44)] **18.f5! Bxb2** [18...Bh6 not much better 19.Qf2 Ng7 20.fxg6 f6 21.f4 Rf8 22.Bc4 Rxc4 23.bxc4 +-(6.60)] **19.fxe6 fxe6 20.Kxb2** white is simply a piece up and with better position **20...Qb6 21.a4 Rf8 22.f4 e5 23.Rhf1 1-0**

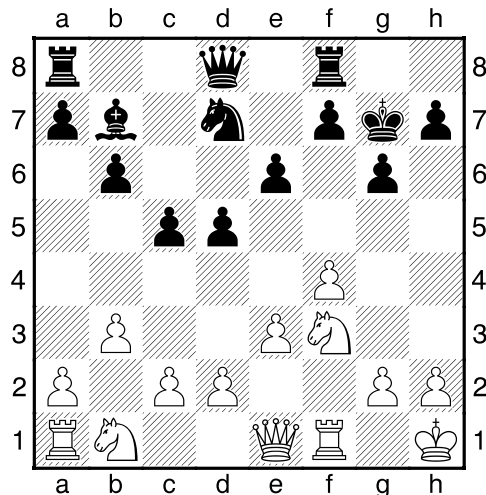
Online link to game in ChessBase format

<http://view.chessbase.com/cbreader/2021/8/24/Game41221719.html>

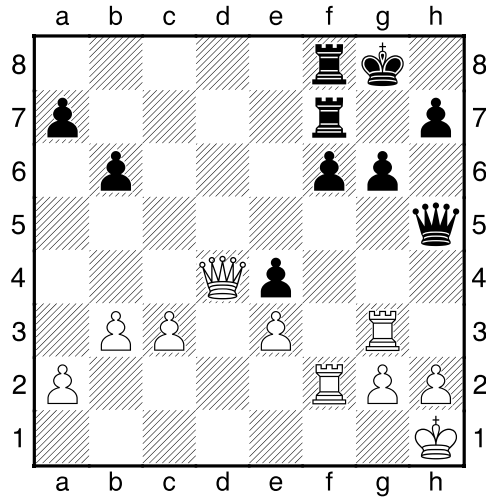
(2) Maparambath,Rahul Manohar (2072) – Sheshappa,Sameeth (2011) [A03]

2021 Kansas Open–Open section (4), 18.07.2021

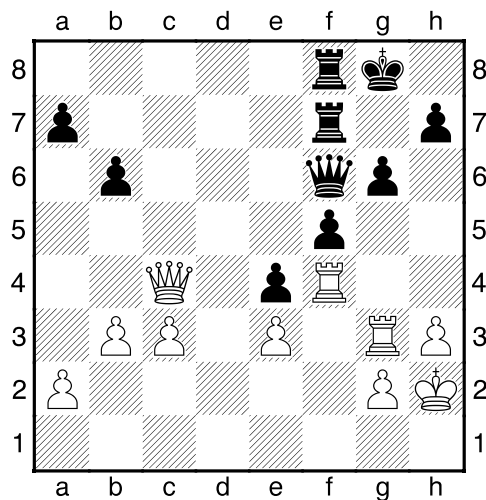
A03: Bird's Opening with 1...d5 1.f4 d5 2.Nf3 Nf6 3.e3 g6 4.b3 Bg7 5.Bb2 0-0 6.Be2 c5 7.0-0 last book move 7...Nbd7 8.Qe1 e6 9.Kh1 b6 10.Bb5 Bb7 11.Bxd7 Nxd7 12.Bxg7 Kxg7 Diagram



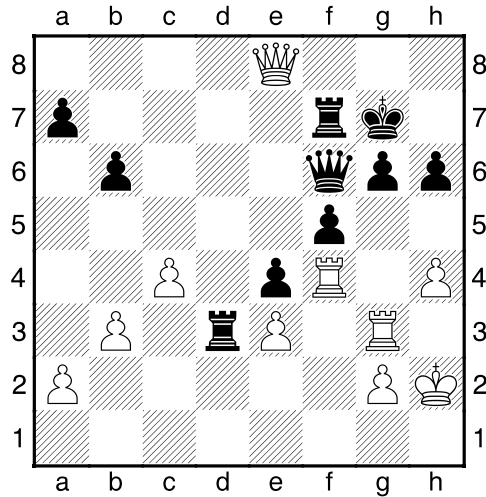
13.d4 Nf6 14.Nbd2 Ne4 15.dxc5 Nxc5 16.Nd4 Qd6 17.Qh4 f6 18.Rf3 Rf7 19.Rh3 Kg8 20.Rg3 Bc8 21.Rf3 Bd7 22.Raf1 Raf8 23.Qh6 Qe7 24.Ne2 e5 25.Rg3 Bf5 26.c3 Bd3 27.Re1 Bxe2 28.Rxe2 exf4 29.Qxf4 Qe5 30.Qd4 Qh5 [30...Ne6! Stockfish thinks this is better 31.Qxe5 fxe5 $\hat{\text{P}}_{\text{Plus}}^{\text{Soft}}(-0.72)$] 31.Rf2 Ne4?=[31...Rd8 better 32.Rxf6?? not this(32.Kg1 slight advantage for black $\bar{\text{P}}(-0.66)$; 32.b4 slight advantage for black $\bar{\text{P}}(-0.66)$)] 32.Nxe4 dxe4= Diagram



33.h3?! [33.Kg1=] 33...Qh4 34.Kh2 f5 35.Rf4? [35.Rd2 better]
 35...Qf6 36.Qc4? Diagram



[36.Qxf6 better though with black still having some advantage
 36...Rxf6 $\mp(-1.27)$; 36.Rf1 better also, though black with some
 advantage $-(1.53)$] 36...Rd8 37.h4 Rd3 38.Qc8+?! Kg7 39.c4?
 h6?! [39...Rd8! wins on the spot 40.Qa6 where else for queen to go
 40...Qa1 41.c5 Rd1! $-+(-24.76)$] 40.Qe8? Diagram



[40.h5 better, though black still has significant advantage 40...g5 41.Rf1 -+(-2.43)] **40...Rd1! 41.a4 Qa1 42.Rxg6+** what else is there to do, position is lost **42...Kxg6 43.Qg8+ Qg7 44.Qe8 Rd2 0-1**

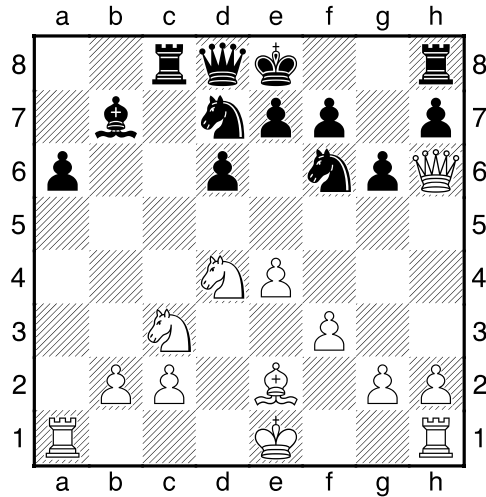
Online Link to Game in ChessBase Format

<http://view.chessbase.com/cbreader/2021/8/25/Game12267575.html>

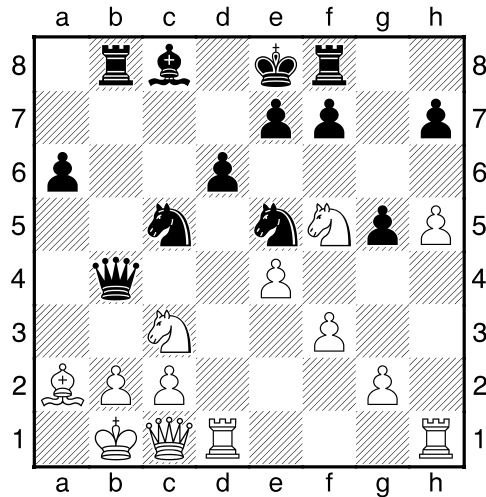
(3) Gradsky,Ben (2048) – Samarathungage,Chanaka (1880) [B72]

2021 Kansas Open– Open Section Overland Park (2), 17.07.2021

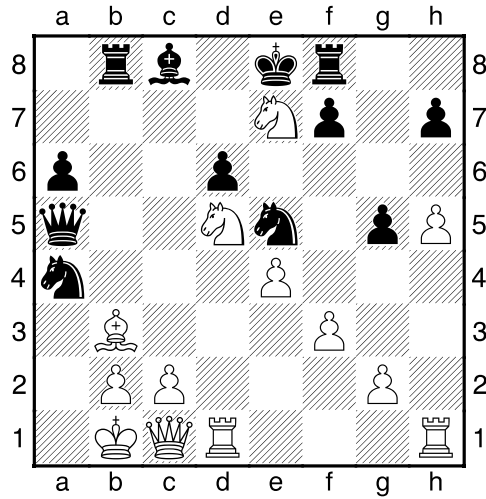
B72: Sicilian Dragon: 6 Be3, lines with h3+Bc4 and sidelines **1.e4 c5 2.Nf3 d6 3.d4 cxd4 4.Nxd4 Nf6 5.Nc3 g6 6.Be3 a6 7.f3 b5 8.Qd2 Bb7 9.a4 bxa4 10.Nxa4 Nbd7 11.Be2 Bg7** last book move **12.Bh6 Bxh6 13.Qxh6 Rc8 14.Nc3=** Diagram



14...Qb6 15.0-0-0 Nc5 16.h4 Qa5 17.Kb1 Qb6 18.Qg7 Rf8 19.Qh6 Rb8= 20.Qc1 Nfd7 21.h5 g5 22.Bc4= Qb4 23.Ba2 Ne5 24.Nf5 slight advantage for white $\pm(0.70)$ 24...Bc8? Diagram



Black losing now [24...Rg8 only slight advantage for white; 24...Ba8 only slight advantage for white] 25.Nd5 Qa5 26.Nfxe7 Na4 27.Bb3 Diagram



27...Nc4? losing big time now $\pm(16.72)$ **28.Nc6 Qc5?** [28...f6 prevents mate but loses queen] **29.Nf6# 1-0**

Online link in ChessBase format

<http://view.chessbase.com/cbreader/2021/9/18/Game7687854.html>

More Games to Follow