

2014 WINTER PLAINS CHESS



The 2014 WINTER PLAINS CHESS, the Kansas Chess Bulletin by editor Laurence Coker, consists of several parts.

News update- pages 2-4

New Year Bash Cross tables- pages 4-7

Games- pages 9-27

Kansas Open Flier-pages 28-30

WINTER CHESS NEWS

Much has happened since the summer edition of PLAINS CHESS was put out after the 2013 Kansas Open.

One event occurring with the Kansas Open was the annual meeting with the election of officers. At the meeting **Rick Hodges was re-elected President** and Brian Yang was elected Vice-President. Soon after the meeting it became apparent that Rick was going to have to leave the state to New York for a new job. Thus, Brian Yang became President. He appointed a new Vice-President, Dan Holmes, who had been the editor of the PLAINS CHESS bulletin the previous year.

Rick Hodges, in addition to his position as President was in charge of the **Renaissance Festival Booth**, the major fund raiser for the Kansas Chess Association. He had been in charge the previous year also. I volunteered to take over for Rick in this capacity. It seemed logical especially considering I had been in charge from 2005 to 2010. In addition to communication between Rick and the Renfest management during the off season, Rick had gotten together a signup sheet for volunteers for the Renfest. So, much of this work, the signup sheet, had already been done by Rick when I took over. Everybody just needed to show up to work.

In communication with the Renfest a number of things were started this year that were not in place in previous years, though the only thing really significant change was a new fee we were required this year to pay to the city of Bonner Springs (\$55).

For those that don't know, the Renaissance Festival runs seven weekends. It always starts on Labor day weekend and often stops on Columbus Day weekend, which it did this year. After all was said and done we brought in \$1306 including donations made at the booth. If that was the amount we get to keep that would be great. But, we have to pay liability insurance, fee to Bonner Springs, and maintenance fees on the booth. And, we have to pay Renfest 15% of our money that our booth makes, not counting donations. Thus, in the end we made \$843.

Special thanks go out to our volunteers this year which includes Spencer and Joe Conklin, myself, Bob Spies, Raymond Paul, CJ and Thomas Armenta, Tom Moloney, Darius Masuhud, William Quinlan, Ben Gradsky, Collette Wright, Troy and Zach Schuh, Joey Kelly, Hyung Ju Nam, Diane and Logan Camarda, Kyle Camarda, Peter Lesslie, Andrei Elliot, Duane Johnson, and Tom Martin. I hope I did not leave anyone's name off this list.



Hyung Ju Nam, Laurence Coker, Joey Kelly at the Renaissance Booth



Tom Martin and Duane Johnson in Background (unknown fellow and girl in foreground)

Other News: There have been a number of tournaments. Jason Qian has directed **four tournaments at the Indian Creek Community Church** in Olathe, KS since the 2013 Kansas Open, one August 3rd, one October 12th, and December 7th, 2013 and more recently February 15th of 2014. Participation varies with 22, 20, 12, and 14 participants respectively. In August Abhishek Mallela, Joey Kelly, and David Saylor finished tied with 3.5 points out of 4.0 points possible. In October Bob Holliman and Abhishek Mallela finished tied with 3.5 points. In December Joey Kelly and Bob Spies finished tied for first with 3.0 points in this four round event. With the this tourney, scholastic player Joey Kelly achieved his first expert rating. In the February 2014 tourney Ron Luther finished by himself win 4 wins in 4 games. Finishing tied for second were Yuliya Levitan and Andrew Simmons with 3.0 points each out of four rounds.

Cross tables for each event are as follows

http://main.uschess.org/assets/msa_joomla/XtblMain.php?201308032832

http://main.uschess.org/assets/msa_joomla/XtblMain.php?201310126352

http://main.uschess.org/assets/msa_joomla/XtblMain.php?201312077822

http://main.uschess.org/assets/msa_joomla/XtblMain.php?201402154182



Jason Qian directing one of his tourneys

This year, as has been the case in the previous two years, there have been smaller **adult tournaments held in conjunction with scholastic tourneys**. So far this year both tournaments have been four rounds of game in 25 minutes with a 4 second delay making the tournaments Quick rated only. The **Sunset Hill/West Middle School Lawrence, KS tournament** was held November 9th. The tourney directed by Kyle Camarda had 8 participants with Shams Shaik finishing in first with 3.5 points.

http://main.uschess.org/assets/msa_joomla/XtblMain.php?201311097962

The **Cordley Tournament** was also held in Lawrence, Ks on December 7th and was directed by Brian Yang. There were 6 participants with Kyle Camarda finishing in first with 4 points. http://main.uschess.org/assets/msa_joomla/XtblMain.php?201312077652
At the time of this writing it is unknown if there are any more of these smaller Quick rated events scheduled for 2014.

The **Lindsborg Open** was held December 14th. It was run in conjunction with a scholastic tourney at Smoky Hill High school in Lindsborg. The time control was game in 60 with 5 second delay. The four round tourney only had seven players and was won by tourney director Gabriel Purdy and participant Zachary Walling, both with 3 points out of 4 possible. <http://main.uschess.org/msa/XtblMain.php?201312144992-13523534>

The **New Year Bash** tourney, directed by Brian Yang, was held January 4th in Overland Park. It drew 50 players, 20 in the Open and 30 in the Reserve. CJ Armenta was the assisting tourney director. Finishing in first place in the Open were Missouri players Ron Luther and Abhishek Mallela with 3.5 points out of 4 possible, each with three wins and one draw. There was a three way tie for third place between Sam Un, Joey Kelly, and Jason Wawrzaszek. Each had 3 points. Unusual in the Reserve section, it was won by an unrated player, Oliver Ashworth, with 4 wins in 4 tries. Finishing in second place was another unrated player, Shu Glashausser with 3.5 points out of 4 possible. There was a three way tie for third place with Hyung Ju Nam, Zachary Walling, Matthew Webb, and Nathan Otten all scoring 3 points, all with 3 wins and 1 loss.

Following next are crosstables for the New Year Bash.

NEW YEAR BASH January 4th, 2014

OPEN SECTION

Pair Num	Player Name USCF ID / Rtg (Pre->Post)	Total Pts	Round 1	Round 2	Round 3	Round 4
<u>1</u>	RONALD LUTHER MO 10365007 / R: 2203 ->2207 Q: 2067 ->2071	3.5	W 18	W 16	D 2	W 6
<u>2</u>	ABHISHEK MALLELA MO 12888811 / R: 2107 ->2123 Q: 1991 ->2010	3.5	W 8	W 17	D 1	W 3
<u>3</u>	JOEY MICHAEL KELLY KS 14143543 / R: 2012 ->2030 Q: 1901 ->1914	3.0	W 15	W 9	W 13	L 2
<u>4</u>	JASON WAWRZASZEK KS 12685755 / R: 1997 ->1986 Q: 1876 ->1858	3.0	D 19	D 10	W 8	W 9
<u>5</u>	SAM N UN KS 12571317 / R: 1760 ->1798 Q: 1624 ->1654	3.0	L 13	W 20	W 11	W 10

6	JACK RICHARD EASTON	2.5	W	20 D	13 W	7 L	1
KS	14510393 / R: 1952 ->1969	N:1					
	Q: 1697 ->1743						
7	SHAKTIPRASAD SHIMPI	2.5	D	10 W	19 L	6 W	14
KS	14901082 / R: 1893P24->1894	N:2					
	Q: 1720P24->1717						
8	ZACHARY LANDON SCHUH	2.0	L	2 W	12 L	4 W	16
KS	13760474 / R: 1694 ->1724	N:2					
	Q: 1549 ->1577						
9	KAUSTUBH SANJAY NIMKAR	2.0	W	14 L	3 W	17 L	4
KS	14100882 / R: 1628 ->1702	N:2					
	Q: 1130 ->1297						
10	BRYAN LIU JIANG	2.0	D	7 D	4 W	16 L	5
KS	14097248 / R: 1595 ->1669	N:2					
	Q: 1331 ->1448						
11	ADAM P ALBRIGHT	2.0	L	16 W	18 L	5 W	17
KS	14243081 / R: 1540 ->1600	N:3					
	Q: 1336 ->1431						
12	APRAMAY MISHRA	2.0	L	17 L	8 W	20 W	19
KS	14100400 / R: 1508 ->1554	N:3					
	Q: 1225 ->1336						
13	BOB HOLLIMAN	1.5	W	5 D	6 L	3 U	
MO	10364833 / R: 2206 ->2200						
	Q: 2011 ->1989						
14	MOHAMMADREZA HAJIARBABI	1.5	L	9 D	15 W	19 L	7
KS	14796427 / R: 1953 ->1912	N:3					
	Q: 1751 ->1702						
15	DR JASON QIAN	1.5	L	3 D	14 W	18 U	
KS	13469141 / R: 1670 ->1702						
	Q: 1539 ->1573						
16	KIANA HAJIARBABI	1.0	W	11 L	1 L	10 L	8
KS	14796433 / R: 1801 ->1766						
	Q: 1641 ->1599						
17	ANDREW SIMMONS	1.0	W	12 L	2 L	9 L	11
KS	12645072 / R: 1765 ->1728						
	Q: 1692 ->1633						
18	DAVID SAYLER	1.0	L	1 L	11 L	15 B	
MO	12616509 / R: 1706 ->1664						
	Q: 1600 ->1550						
19	WILLIAM JUNJIE WANG	0.5	D	4 L	7 L	14 L	12
KS	14727424 / R: 1629 ->1609						
	Q: 1542 ->1506						
20	LAURENCE COKER	0.0	L	6 L	5 L	12 U	
KS	12174160 / R: 1624 ->1587						
	Q: 1465 ->1419						

**NEW YEAR BASH January 4th, 2014
RESERVE SECTION (U1600)**

Pair Num	Player Name USCF ID / Rtg (Pre->Post)	Total Pts	Round 1	Round 2	Round 3	Round 4
<u>1</u>	<u>OLIVER ASHWORTH</u> 15327403 / R: Unrated->1945P4 Q: Unrated->1854P4	4.0	W 6	W 18	W 4	W 7
<u>2</u>	<u>SHO GLASHAUSSER</u> KS 15326071 / R: Unrated->1737P4 Q: Unrated->1596P4	3.5	W 12	W 10	D 7	W 8
<u>3</u>	<u>HYUNG JU NAM</u> KS 14292541 / R: 1591 ->1563 Q: 1474 ->1476	3.0	L 9	W 17	W 19	W 13
<u>4</u>	<u>ZACHARY WALLING</u> OK 15301071 / R: 1474P12->1483P16 Q: 1444P12->1452P16	3.0	W 16	W 13	L 1	W 11
<u>5</u>	<u>NATHAN T OTTEN</u> MO 15293744 / R: 1413P4 ->1420P8 Q: 1279P7 ->1339P11	3.0	W 17	W 9	L 8	W 12
<u>6</u>	<u>MATTHEW WEBB</u> KS 15059098 / R: 1221P10->1266P14 Q: 1155P10->1202P14	3.0	L 1	W 29	W 14	W 15
<u>7</u>	<u>CJ ARMENTA</u> MO 12650738 / R: 1547 ->1559 Q: 1456 ->1467	2.5	W 15	W 11	D 2	L 1
<u>8</u>	<u>MARTIN DAVID STAHL</u> MO 12561384 / R: 1548 ->1536 Q: 1347 ->1349	2.5	W 14	D 19	W 5	L 2
<u>9</u>	<u>NEDA TORABI</u> KS 14762513 / R: 1061P13->1220P17 Q: 2001P5 ->1780P9	2.5	W 3	L 5	D 18	W 19
<u>10</u>	<u>GABRIEL RICHARD MAURER</u> KS 15024882 / R: 1268 ->1255 Q: 1177 ->1169	2.0	W 23	L 2	L 15	W 18
<u>11</u>	<u>ANDREI ELLIOTT</u> KS 12971353 / R: 1146 ->1136 Q: 1088 ->1078	2.0	W 30	L 7	W 26	L 4
<u>12</u>	<u>FRED A SMITH</u> MO 13100001 / R: 1137 ->1128 Q: 966 -> 964	2.0	L 2	W 27	W 24	L 5
<u>13</u>	<u>BRUCE ELLIOTT</u> KS 13456631 / R: 1089 ->1084 Q: 1114 ->1104	2.0	W 24	L 4	W 25	L 3
<u>14</u>	<u>CAROLINE LI JIANG</u> KS 14421840 / R: 1044 ->1034 Q: 964 -> 953	2.0	L 8	W 23	L 6	W 25
<u>15</u>	<u>ETHAN BUI</u> KS 15061846 / R: 963 ->1019 Q: 906P20-> 959P24	2.0	L 7	W 30	W 10	L 6
<u>16</u>	<u>PAMELA WEBB</u> KS 15059083 / R: 816P4 -> 799P8 Q: 672P4 -> 685P8	2.0	L 4	L 24	W 20	W 23

CHESS GAMES- 2014 Winter PLAINS CHESS

I was fortunate to have Brian Yang direct the New Year Bash tourney on January 4th as he provided carbonless score sheets giving me games to use for this bulletin. Even though the Reserve section had 30 players and the Open section had only 20, I obtained almost three times as many copies of score sheets from the Open section as opposed to the Reserve section. Plus, the games in the Open section were easier to follow and with less mistakes in the notation. Thus, the games section contains more Open section games (9) than Reserve section games (4). The Reserve section players were rated under 1600.

I list three games that did not occur during the New Year Bash tourney. I have a rare Wesley Koehler games. Wesley, the second highest rated player in Kansas behind Conrad Holt, played a couple of tourneys in Oklahoma; the North American Open over Labor Day weekend and the 2nd Fall FIDE tournament in October. Despite not playing in a tourney in quite some time, Wesley's results were consistent with his current rating. The game provided is from the NAO tourney in September.

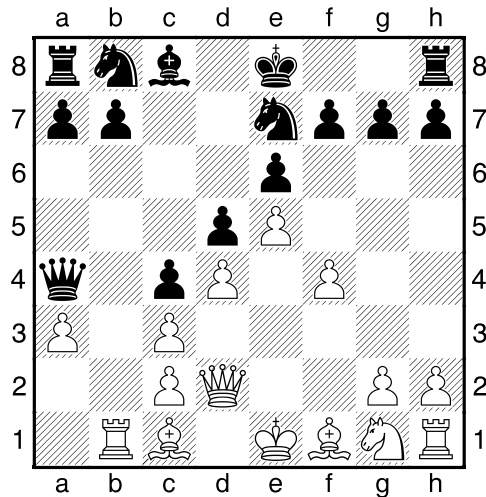
I provide a rather incomplete game of mine against new Kansas expert junior chess player Joey Kelly from the August ICCC tourney. I provide another game of mine against long time KCA player and former KCA President Ralph Bowman, the game from the Western Missouri Open in November. All other games listed are from the New Year Bash tourney on January 4th. All games are decisive except draw in game 14. Games analyzed with the help of Fritz 12.

- (1) Wesley Koehler vs. Abhishek Mallela- 9/1/2013- (1-0)
- (2) Laurence Coker vs. Joey Kelly- 8/3/2013- (0-1)
- (3) Ralph Bowman vs. Laurence Coker- 11/23/2013- (0-1)
- New Year Bash all games on 1/4/2014**
- (4) Oliver Ashworth vs CJ Armenta (Reserve) (1-0)
- (5) Sho Glashausser vs. David Stahl (Reserve) (1-0)
- (6) Shakti Shimpi vs. Jack Easton (Open) (0-1)
- (7) Joey Kelly vs Abhishek Mallela (Open) (0-1)
- (8) Matthew Webb vs. Caroline Jiang (Reserve) (1-0)
- (9) Shakti Shimpi vs William Wang (Open) (1-0)
- (10) Kaustabh Nimkar vs. Andrew Simmons (Open) (1-0)
- (11) Andrew Simmons vs Abhishek Mallela (Open) (0-1)
- (12) Sam Un vs. Bryan Jiang (Open) (1-0)
- (13) Jason Qian vs. David Saylor (Open) (1-0)
- (14) Jason Wawrzasek vs. Zach Schuh (Open) (1-0)
- (15) Jason Qian vs. Mohammadreza Hajairbabi (Open) (1/2-1/2)
- (16) Matthew Webb vs. Oliver Ashworth (Reserve) (0-1)

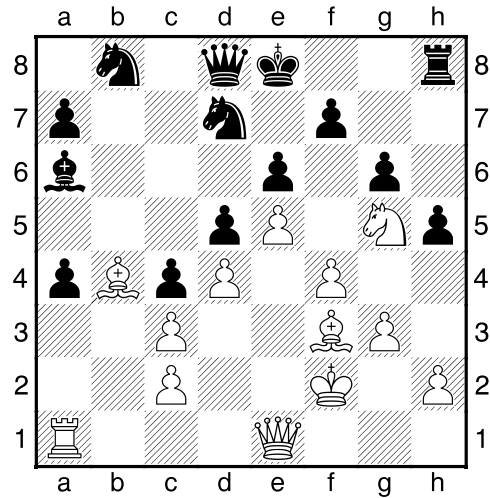
**(1) Wesley Koehler (2251)
- Abhishek Mallela (2074)**

NAO (6), 01.09.2013

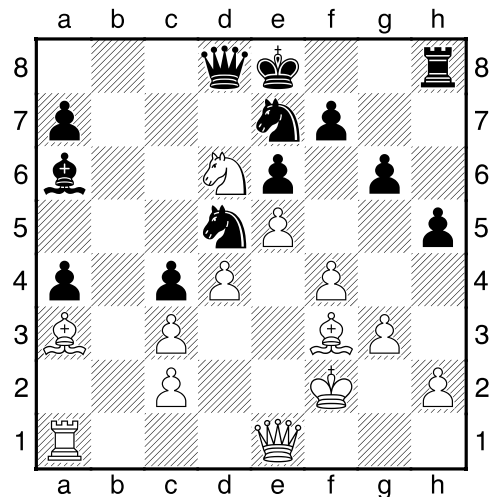
C18: French: 3 Nc3 Bb4: Main
line: 7 h4 and 7 Qg4 1.e4 e6
2.d4 d5 3.Nc3 Bb4 4.e5 c5
5.a3 Bxc3+ 6.bxc3 Qa5 last
book move 7.Qd2 Qa4 8.Rb1
c4 9.f4 Ne7 Diagram



10.Nf3 h5 11.g3 Nd7 12.Bh3
g6 13.Bg2 Nf5 14.Kf2 b5
15.Rb4 Qa5 16.a4 bxa4
17.Ba3 Ba6 18.Ng5 Nf8
[18...0-0 Better 19.Rb2 Rfb8
20.Bb4 Qc7=] 19.Ra1 Nd7
20.Qe1 Ne7 21.Bf3 Nc6
22.Rb2 Rb8 23.Rxb8+ Ncxb8
24.Bb4 Qd8? Diagram



[24...Qb5 Better, covering d5
square. ±(1.21)] 25.Bxd5! Nb6
[25...exd5 Not much better
26.e6 Qf6 27.exf7+ Kd8 +-
(4.12)] 26.Bf3 Nd5 27.Ba3 Nc6
28.Ne4 Nce7?! [28...Qa5
Better, though still losing]
29.Nd6+ Diagram



29...Kf8 30.Bxd5 exd5 31.e6
fxe6 [31...Rh7 Slightly better,

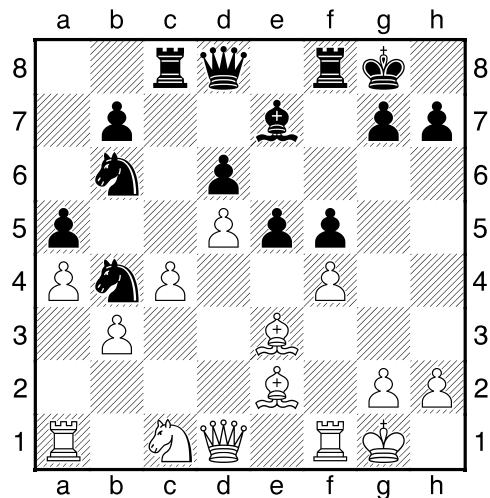
but still losing] 32.Qxe6 Rh7
 33.f5 gxf5 34.Nxf5 Bc8
 35.Qf6+ Ke8 36.Bxe7 Qc7
 37.Re1 Bxf5 38.Bd6+ Be4
 39.Qf8+ 1-0

**(2) Laurence Coker (1647)
 – Joey Kelly (1929)**

2013 August ICCG (2),
 03.08.2013

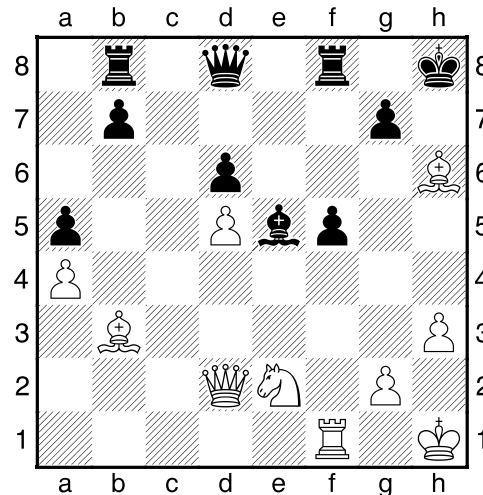
B59: Classical Sicilian: 6 Be2
 e5 7 Nb3 1.e4 c5 2.Nf3 Nc6
 3.d4 cxd4 4.Nxd4 Nf6 5.Nc3
 d6 6.Be2 e5 7.Nb3 Be7 8.Be3
 0-0 9.f3 a5 last book move
 10.a4 Be6 11.Nd5 Bxd5
 12.exd5 Nb4 13.c4 Nd7 14.0-0
 f5 15.f4 Rc8 16.Nc1 Nb6 17.b3

Diagram

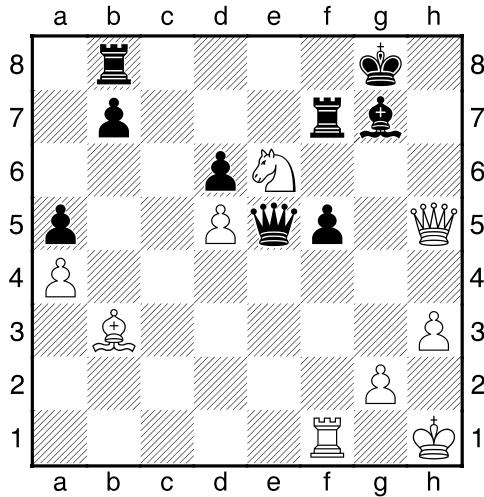


17...N6xd5 I didn't see this, but
 actually white is not really that
 bad off. 18.cxd5 Nc2 19.Bf2
 Nxa1 20.Bc4 The knight is
 trapped. 20...Qc7 21.Ne2?!=
 [21.fxe5 Better 21...b5 22.axb5

a4 23.b6 Qb8 ±(1.25)]
 21...Nxb3 22.Bxb3 Kh8
 23.Qd2 Qd8 24.Kh1 Bf6 25.h3
 h6 26.Be3 Rb8 27.fxe5 Bxe5
 28.Bxh6? Diagram



Not necessary. I thought I saw
 a draw by perpetual, but it is
 not there. In the end the move
 is not all that bad, two pawns
 for a bishop and exposing the
 black king. 28...gxh6
 29.Qxh6+ Kg8 30.Qg6+ Bg7
 31.Nf4 [31.Qe6+ Kh7 32.Nf4
 Qf6 33.Qe2 Rf7=] 31...Rf7?
 32.Ne6 [32.Nh5 Better 32...Qc7
 33.Nxg7 Rxc7 34.Qe6+ Kh8
 35.Rxf5 Rbg8 36.Qe1 Rh7
 37.Bc2 Qxc2 38.Qa1+ Rhg7
 39.Rh5+ Qh7 40.Rxh7+ Kxh7
 41.Qf6 +-(2.54)] 32...Qf6
 33.Qh5 Qe5 Diagram

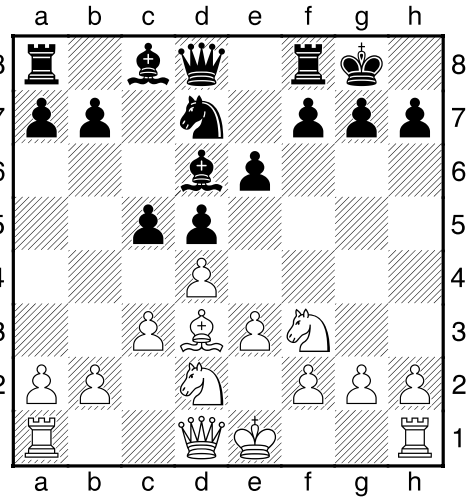


34.Qh4? I can't remember the moves after this. I made a very bad move in about 5 moves exposing my back rank. I only had 20 seconds left on my clock when I made the bad move and Joey had 6 minutes left. [34.Ng5! I didn't look at this, but this wins the exchange 34...Rf6 35.Qh7+ Kf8 36.Ne6+ Rxe6 37.dxe6 f4 38.Qh4 +- (4.07)] **0-1**

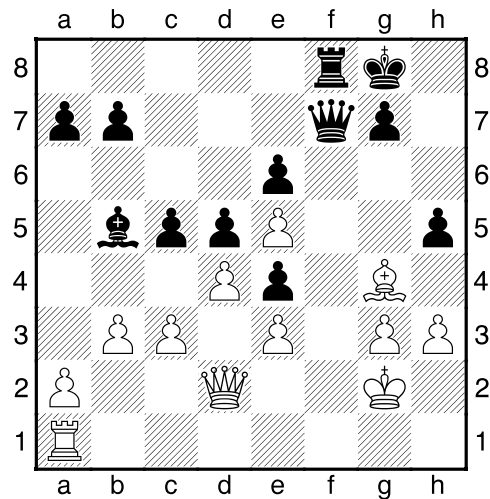
**(3) Ralph Bowman (1500)
- Laurence Coker (1669)**

Western Missouri Open (3),
23.11.2013

A46: 1 d4 Nf6 2 Nf3 e6: Torre,
London and Colle Systems
1.d4 Nf6 2.Nf3 c5 3.Bg5 last
book move **3...Ne4 4.c3 Nxc3**
5.Nxc3 e6 6.Nf3 d5 7.e3 Bd6
8.Bd3 0-0 9.Nbd2 Nd7=
Diagram

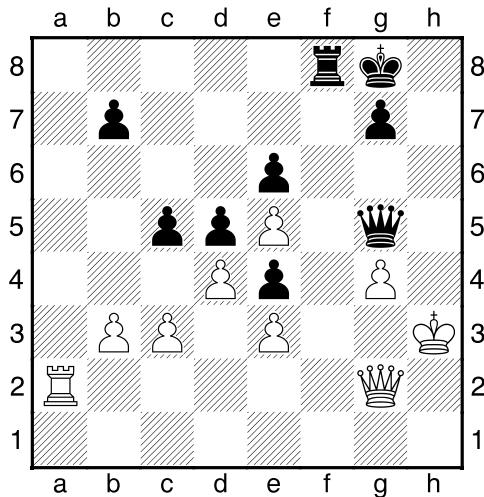


**10.0-0 f5 11.h3 Nf6 12.Ne5
Bd7 13.f4 Be8 14.Be2 Ne4
15.Nxe4 fxe4 16.Bg4 Qe7=
17.g3 Bxe5 18.fxe5 Rxf1+
19.Kxf1 Bb5+ 20.Kg2 Rf8
21.Qd2 Qf7 22.b3 h5! Diagram**



23.a4? hxg4? Really?
[23...Bf1+! I didn't even look at
this. But, it should be rather
obvious. It wins on the spot.
24.Kh2 hxg4 25.h4 g5 26.c4

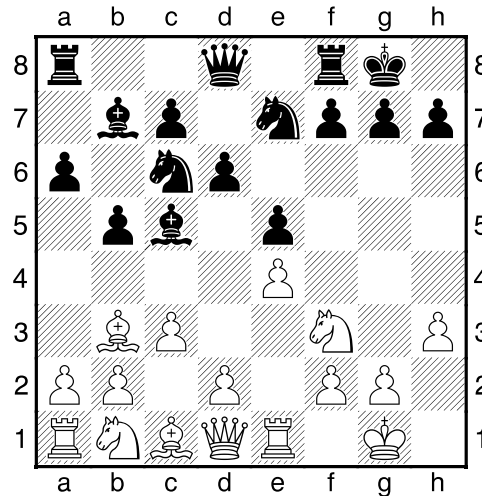
gxf4 27.Qe1 hxf3+ 28.Qxf3
 Qh5+ 29.Kg1 Rf3 Mate in 13]
24.axb5 Qf3+ 25.Kh2 gxf3
26.Rxa7 Qf1 27.Ra2 Qxb5
28.Kxf3 Qf1+ 29.Qg2 Qf5+
 Only very slight advantage
 black here. **30.g4?** Losing
 move **30...Qg5!** Diagram



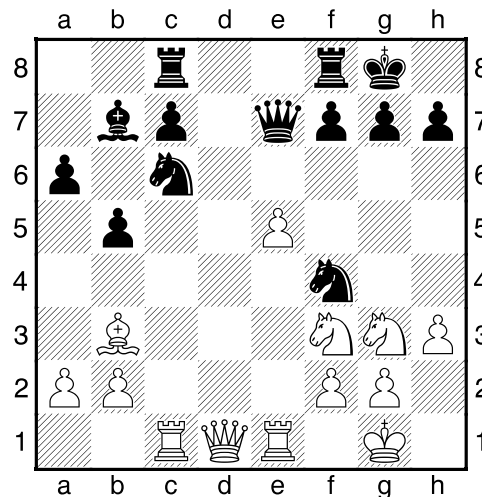
31.Kh2 Qxe3 [31...Rf3 Better
32.Re2 (32.dxc5 Qh6+ 33.Kg1
Qxe3+ 34.Kh2 Qf4+ 35.Kg1
Rg3 -+(-13.00)) 32...Qh4+
33.Kg1 Rg3 Wins queen]
32.Qg3 Qxf3+ 33.Kxf3 Rf3+
34.Kg2 Rxc3 35.Rb2 cxd4
36.b4 d3 37.Kf1 Rc2 38.Rb3
d4 39.g5 Kf7 40.Ke1 Kg6
41.b5 Kxf5 42.b6 Kf4 43.Rb4
Ke3 White resigns 0-1

(4) Oliver Ashworth
(unrated) – CJ Armenta
(1547) (This game decided
the winner of the Reserve

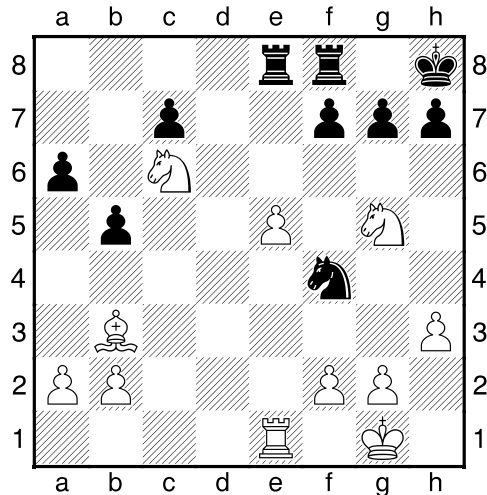
section) New Year Bash
 Overland Park (4), 04.01.2014
 C64: Ruy Lopez: Classical
 Defence (3...Bc5) except 4 0-0
 Nf6 **1.e4 e5 2.Nf3 Nc6 3.Bb5**
Bc5 4.0-0 Nge7 5.c3 0-0 last
 book move **6.h3 d6 7.Re1 a6**
8.Ba4 b5 9.Bb3 Bb7 Diagram



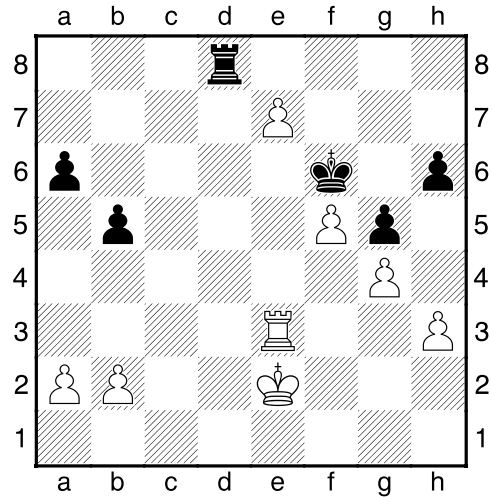
10.d4 exd4 11.cxd4 Bb4
12.Bd2 Bxd2 13.Nbxd2 Ng6
14.Nf1 Qf6 15.Rc1 Nf4 16.Ng3
Rac8 17.e5 dxe5 18.dxe5
Qe7? Diagram



[18...Qh6 19.Nf5 (19.Rc3 Ne7 ±(0.40)) 19...Qg6= Threatening mate. 20.N5h4 Qh6=] **19.Nf5! Qd8 20.Qxd8 Rcx d8 21.Rxc6 Bxc6 22.Ne7+ Kh8 23.Nxc6 Rde8 [23...Rd7 Better] 24.Ng5**
Diagram



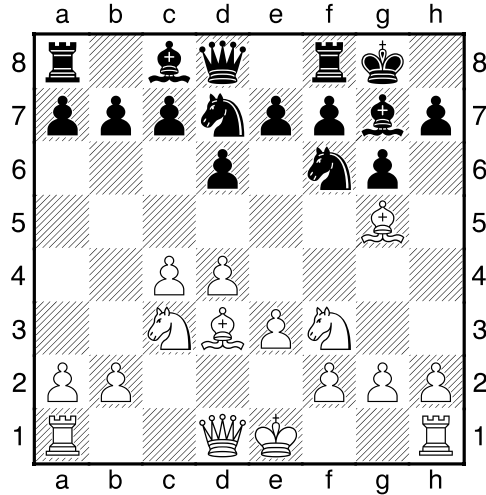
24...Ne6 25.Nxe6 fxe6 26.Nd4 Re7 27.Nxe6 Rfe8 28.Rc1 [28.Ng5 Better 28...h6 29.Nf7+ Kh7 30.Rc1 +-(5.08)] 28...Rxe6 29.Bxe6 Rxe6 30.Rxc7 h6 31.f4 Kh7 32.g4
This is just a matter of technic from here on out. **32...Kg8 33.Rc5 g5 34.f5 Re8 35.Kf2 Rd8 36.Ke2 Rd4 37.e6 Kg7 38.Re5 Kf6 39.Re3 Rd8 40.e7**
Diagram



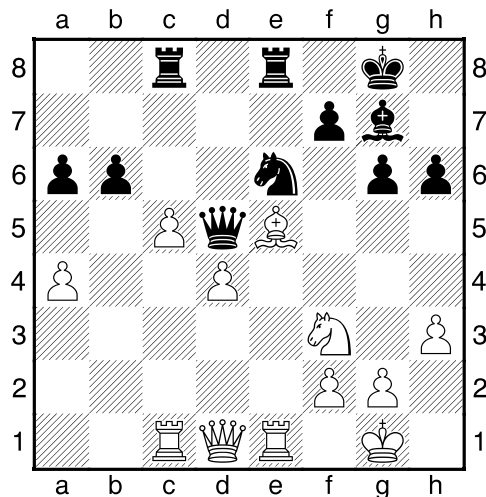
40...Re8 41.Kd3 Kf7 42.Kd4 Rc8 43.e8Q+ Rxe8 44.Rxe8 Kxe8 1-0

(5) Sho Glaushauser (unrated)– Martin David Stahl (1548)

New Year Bash (4), 04.01.2014
E61: King's Indian: Early deviations for White, including Smyslov System **1.d4 Nf6 2.c4 g6 3.Nc3 Bg7 4.Nf3 0-0 5.Bg5 d6 6.e3 Nbd7** last book move **7.Bd3** Diagram

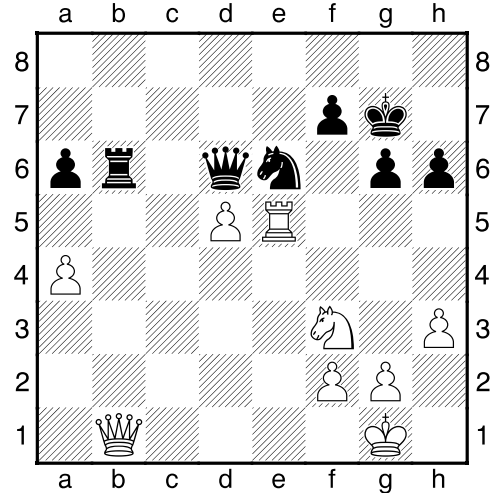


7...c5 8.0-0 h6 9.Bh4 cxd4
 10.exd4 Re8 11.Re1 Nf8 12.b4
 Bd7 13.c5 Rc8 14.Rc1 dxc5
 15.bxc5 Bg4 16.Bb5 Bd7
 17.a4 a6 18.Bxd7 Qxd7 19.h3
 Nd5 20.Nxd5 Qxd5 21.Bxe7
 Ne6 22.Bd6 b6 23.Be5
 Diagram



23...Bf8? Losing now 24.cxb6
 Rxc1 25.Qxc1 Bg7 26.Bxg7
 Kxg7 27.Qb1 Rb8 28.Re5 Qd6

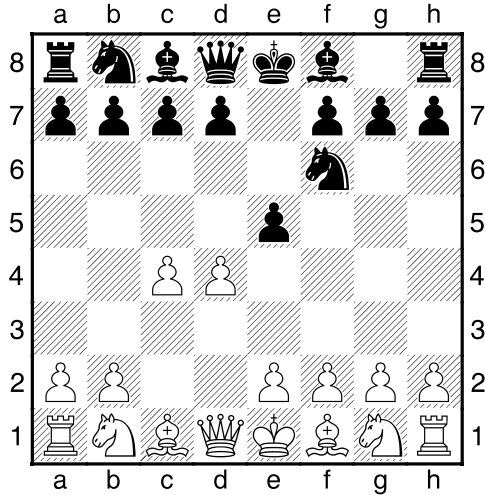
29.d5? [29.a5! Nxd4 30.Nxd4
 Qxd4 31.Re7 +-(3.15)]
 29...Rxb6? Diagram



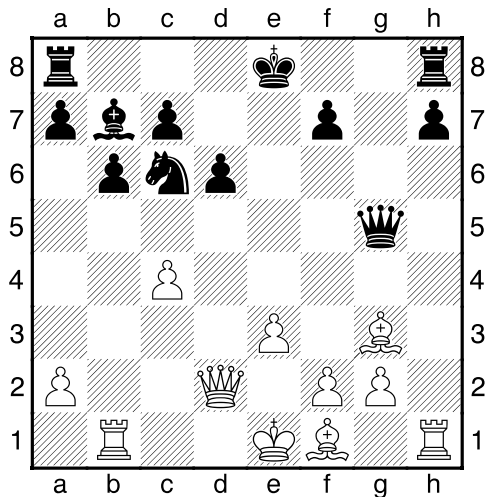
[29...Ng5 Necessary 30.Qa1 f6
 31.Re3 Nxf3+ 32.gxf3 Qxb6
 33.Re7+ Kf8 34.Re6 Qb1+
 35.Qxb1 Rxb1+ +-(1.50)]
 30.Qa1! Threatening a very
 powerful discovered check as
 well as attacking the knight at
 the same time. 30...Kg8
 31.dxe6 fxe6 32.Qe1 Qd7
 33.Nd2 Rd6 34.Ne4 1-0

**(6) Shaktipasad Shimpi
 (1893)- Jack Easton
 (1952)**

New Year Bash (3), 04.01.2014
 A52: Budapest Gambit 1.d4
 Nf6 2.c4 e5 Diagram

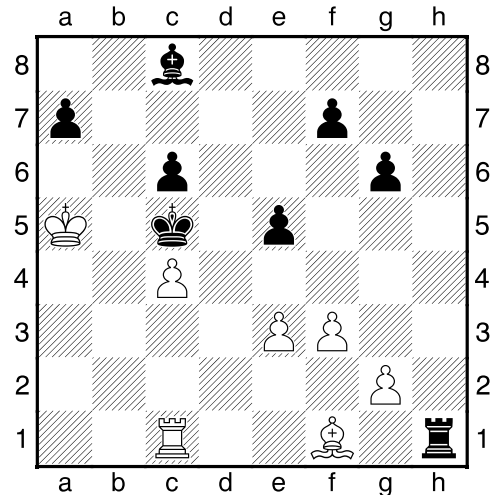


3.dxe5 Ng4 4.Bf4 g5 5.Bg3
Nc6 6.Nf3 Bg7 7.h4 Ngxe5 last
book move 8.Nbd2 Nxf3+
9.Nxf3 Bxb2 10.Rb1 Bc3+
11.Nd2 d6= 12.e3 b6 13.Qc2
Bxd2+= 14.Qxd2 Bb7 15.hxg5
Qxg5 Diagram

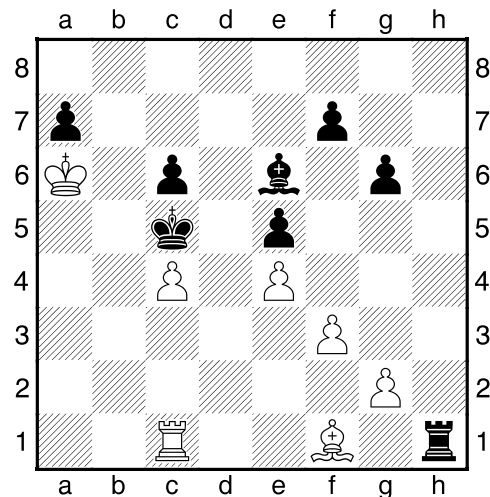


16.Rb5?! Qg7 17.Rb1 0-0-0
18.Qc2 Ne5 19.a4 Qg6
20.Qxg6 hxg6 21.Rxh8 Rxh8
22.Bxe5 dxe5 23.f3 Ba6

24.Kd2 Rh1 25.Kc3 Kd7
26.Kb4 Kc6 27.Rc1 Bc8
28.a5?! [28.c5 Better and more
in line with having rook on c1]
28...bxa5+ 29.Kxa5 Kc5
30.Rb1 c6 31.Rc1 Diagram



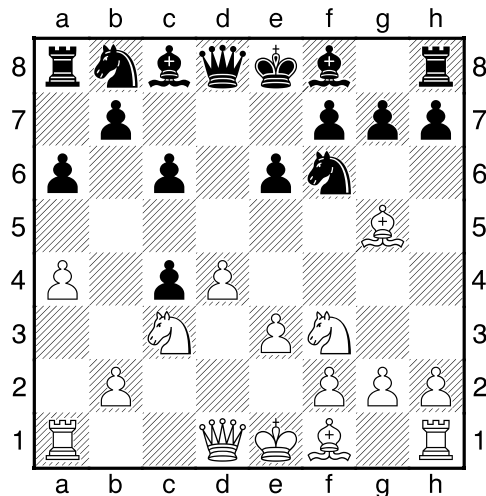
[31.Bd3 Better though still
losing. The pin on the bishop
makes things difficult.] 31...Bf5
32.e4 Be6 33.Ka6? Diagram



33...Rxf1! (34.Rxf1 Bxc4+) 0-1

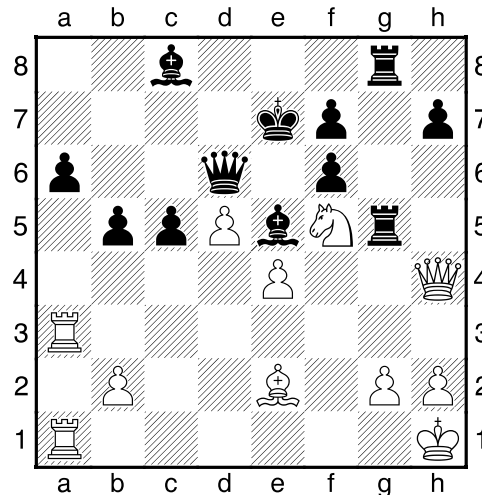
**(7) Joey Kelly (2012) –
Abhishek Mallela (2107)**

New Year Bash (4), 04.01.2014
D15: Slav Defence: 4 Nc3 a6
and gambit lines after 4 Nc3
dxc4 (This is an extremely
complicated game with wide
swings in advantage one way
and the other, but marked by
Black's time troubles.) 1.d4 d5
2.c4 c6 3.Nf3 Nf6 4.Nc3 a6
5.a4 e6 6.Bg5 last book move
6...dxc4 7.e3 Diagram

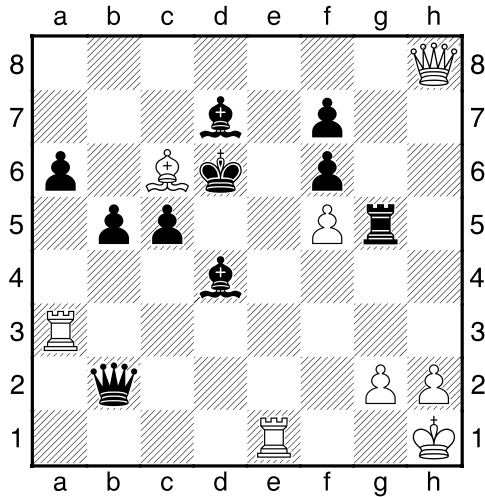


7...Qa5 8.Bxf6 gxf6 9.Bxc4
Nd7 10.0-0 Qb4 11.Qe2 Nb6
12.Bd3 Bd7 13.e4 c5 14.d5 e5
15.Nd2 [15.a5 Threatening to
trap the queen. 15...c4 16.Bc2
Qxb2 17.Qe3 Qxc2 18.Rfc1
Qd3 19.Qxb6 +-(1.77)]
15...Nxa4 16.Nxa4 Bxa4
17.Nb1 Bd7 18.Nc3= Rc8
19.Bc4 Bd6 20.Ra3 Qb6 21.f4

Qc7 22.fxe5 Bxe5 23.Qh5 Qd6
24.Nd1 Ke7 25.Be2 Rcg8
26.Kh1 Rg5 27.Qh4 Rhg8
28.Ne3 b5 29.Rfa1 Bc8
30.Nf5+ Diagram

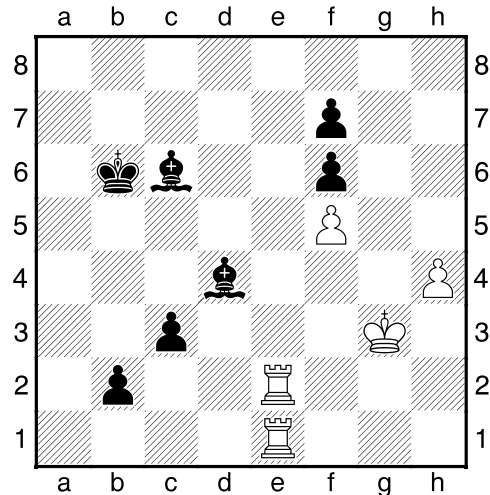


30...Rxf5? [30...Bxf5! 31.exf5?
(31.Bf3 Bc8 32.R1a2 -+(-7.17))
31...Rxc2 32.Re3 Kd7 33.Rxe5
+(-9.67)] 31.exf5 Qxd5 32.Bf3
Qd4 33.Qxh7 Rg5 34.Rd1
Qxb2? [34...Qf4 35.g3 (35.Bd5
Rg7! 36.Qh8 Rg8 37.Qh5 Rf8
±(0.73)) 35...Qxf5 36.Qh8 Bd4
+-(1.50)] 35.Qh8 Threatening
mate on d8 35...Bd7 36.Bc6
[36.Rxa6 Mate in 14.] 36...Bd4
37.Re1+ Kd6 Diagram

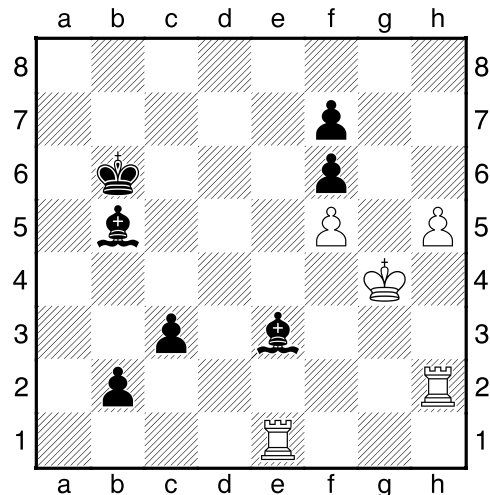


38.Qb8+? Throwing the advantage away. According to Abhishek he, not Joey, was very short of time having only a few seconds left for the rest of the game. **38...Kxc6 39.Qa8+ Kc7 40.Rxa6?** [40.Qa7+! White is still winning despite the loss of the light squared bishop but the position is very complicated because of the mate threatened on g2 and the rook hanging on a3. 40...Kd8 41.Qb6+ Kc8 42.Qxa6+ Kc7 43.Qa7+ Kd6 44.Ra6+] **40...c4** Black has the advantage now. $-+(-1.46)$ **41.Qd5 Qxg2+ [41...Bb6 Better] 42.Qxg2 Rxg2= 43.Kxg2** Black has a slight advantage here, even though he is two exchanges down because of the two connected passed pawns. **43...b4 44.Ra5?** [44.Kf3 b3 (44...Bxf5? 45.Re7+ Bd7 46.Ra5 $+-(2.66)$) 45.Ke4 Fritz says black has

only slight advantage here, but it is very complicated here because of passed pawns.] **44...Kb6 45.Ra2 b3 46.Rae2 Bc6+ 47.Kg3 c3 48.h4 b2? =** Diagram



[48...Bb5!] **49.h5 Bd7 50.Kg4 Bb5 51.Rh2 Be3** Diagram

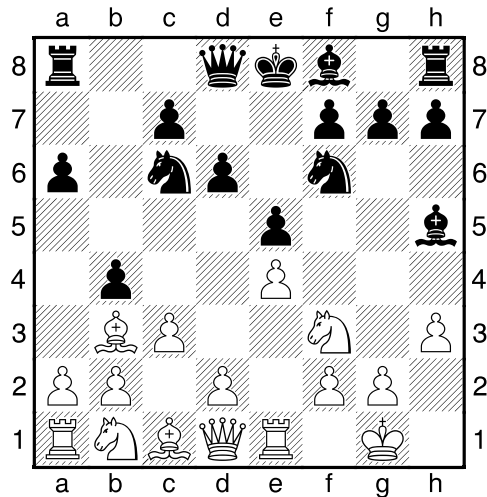


52.Rh3? [52.Rc2! Very complicated position 52...Bd2

53.Rb1 Bd3? (53...Be2+ 54.Kh3 Ka5= 55.Rcxb2 cxb2 56.Rxb2 Bf1+ 57.Kg4 Be2+= equal) 54.Rcxb2+ cxb2 55.Rxb2+ White is winning here] 52...Be2+ 53.Kg3 c2 0-1

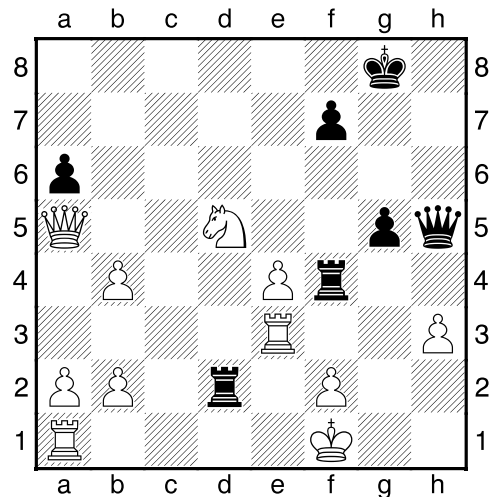
(8) Matthew Webb (1221)- Caroline Jiang (1041)

New Year Bash (2), 04.01.2014
 C78: Ruy Lopez: Archangelsk and Möller Defences 1.e4 e5 2.Nf3 Nc6 3.Bb5 d6 4.0-0 a6 5.Ba4 b5 6.Bb3 Bg4 7.c3 Nf6 8.Re1 last book move 8...b4? 9.h3 Bh5? Diagram

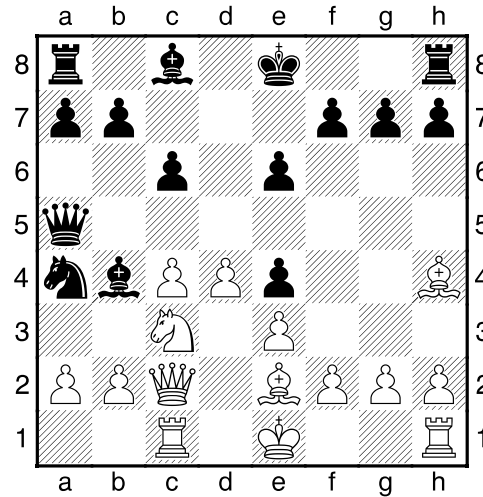
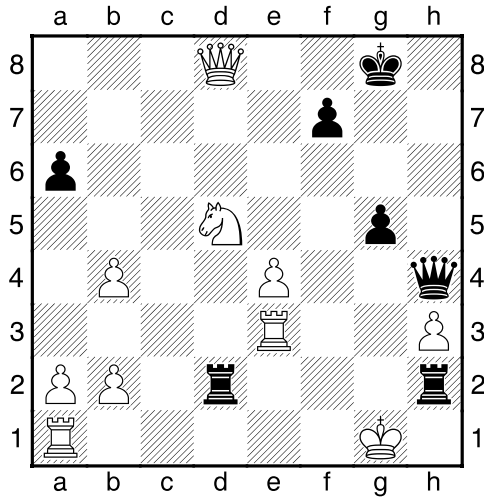


10.Ba4! Rb8 [10...Qd7 Doesn't help. The knight is pinned and there follows 11. d4 and subsequently d5 11.d4 Bxf3 12.Qxf3 +-(5.24) 12...Kd8 13.d5!] 11.Bxc6+ Nd7 12.g4 Bg6 13.d4 Rb6 14.Bxd7+ Qxd7 15.dxe5 h5 16.exd6 Rxd6 17.Qe2 hxg4 18.Ne5

Qe6 19.Nxg6 Qxg6 20.Qxg4 Qh7 [20...Rxb3 Better, but Black is still losing] 21.Kf1 Be7 22.Bf4 Rg6 23.Qc8+ Bd8 24.Bxc7 0-0 25.Bxd8 Rd6 26.Qg4 Rfxd8 27.cxb4 Rh6 28.Re3 Rh4 29.Qf3 g5 30.Qf5 Qh5 31.Nc3 Rf4 32.Qa5 Rd2 33.Nd5?? Diagram



33...Rxf2+?? [33...Qh4! Threatens mate. 34.Qd8+ Kg7 35.Qxg5+ Qxg5 What else to prevent mate. Sack the queen to prevent mate.] 34.Kg1=Rg2+ 35.Kh1 Rh2+ 36.Kg1=Qh4?? Should have taken the draw by perpetual. Now black is losing big time. 37.Qd8+! Diagram

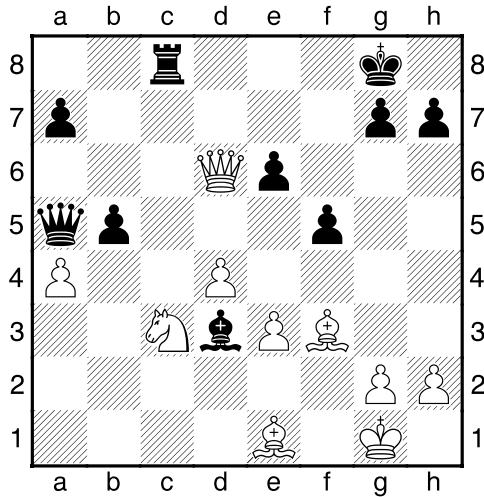


37...Kh7 38.Nf6+! Kg7
 39.Qg8+ Kxf6 40.Rf3+ Ke5
 [40...Qf4 Only move to prevent
 mate] 41.Qe8+ Kd6 42.Rf6+
 Kc7 43.Rc6+ Kb7 44.Qc8+
 Ka7 45.Rxa6# 1-0

**(9) Shaktipasad Shimpi
 (1893) – William Wang
 (1629)**

New Year Bash (2), 04.01.2014
 D52: Queen's Gambit Declined:
 Cambridge Springs Variation
 1.d4 d5 2.c4 e6 3.Nc3 Nf6
 4.Bg5 Nbd7 5.Nf3 c6 6.e3 Qa5
 7.Nd2 Bb4 8.Qc2 Ne4 9.Ndxe4
 dxe4 10.Bh4 last book move
 10...Nb6 11.Be2 Na4 12.Rc1
 Diagram

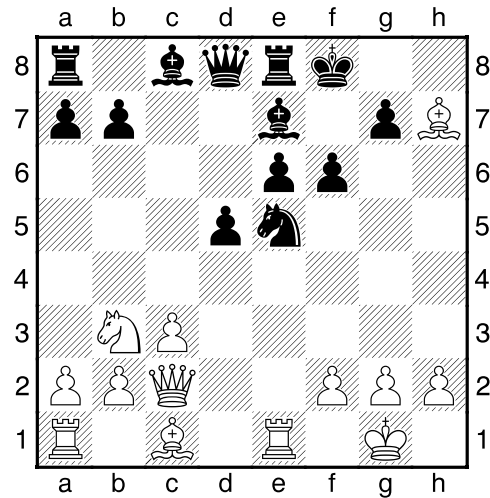
12...Nxb2? A faulty plan.
 13.Qxb2 Ba3 14.Qc2 Bxc1
 15.Qxc1 b6 16.0-0 f5 17.a4 0-0
 18.f3?! [18.Qa3 Better. 18...Rf7
 (18...Re8 19.f3 exf3 20.Bxf3
 Bd7 21.Rc1 +-(3.29)) 19.Bg3
 Ba6 20.Bd6 Threatening to trap
 the queen. 20...c5 21.dxc5
 Rd8 22.Nb5 bxc5 23.Bxc5 +-(
 3.26); 18.Be7 Better 18...Rf7
 19.Bd6 +-(2.99)] 18...exf3
 19.Bxf3 Ba6 20.Bxc6 Bxc4
 21.Bxa8 Bxf1 22.Bf3 Bd3
 23.Qa3 Rc8 24.Be1 b5?!
 [24...Bc4 Better.] 25.Qd6
 Diagram



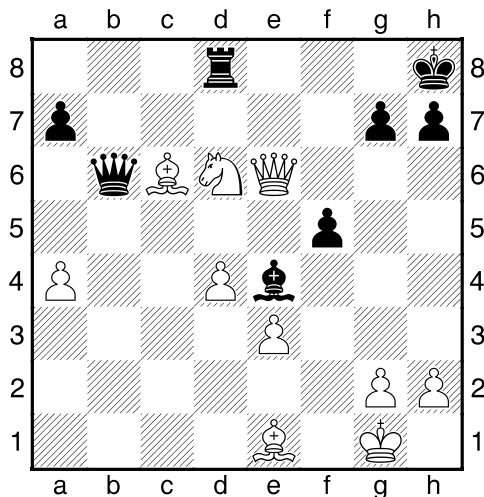
**(10) Kaustabh Nimkar
(1628) – Andrew
Simmons (1765)**

New Year Bash (3), 04.01.2014
D05: Colle System with ...e6
1.d4 d5 2.Nf3 Nf6 3.e3 e6
4.Bd3 c5 5.c3 Nc6 6.Nbd2
Bd6 7.0-0 0-0 8.dxc5 Bxc5
9.e4 last book move 9...Re8
10.e5 Ng4 11.Nb3 Be7 12.Re1
f6 13.Qc2 Ngxe5 14.Nxe5
Nxe5 15.Bxh7+ Kf8 Diagram

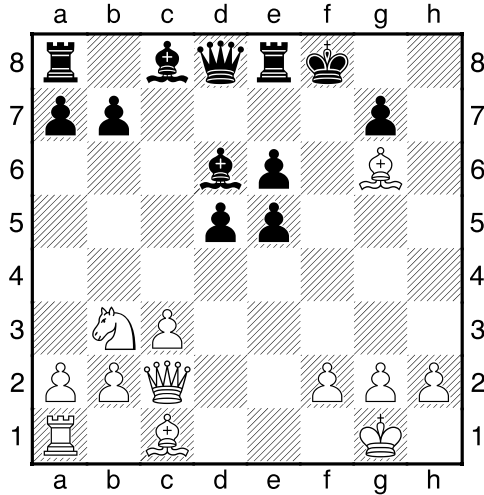
25...Re8? [25...Bc4 Better, but still losing. \pm -(2.63); 25...Qb6 Better, but still losing. \pm -(2.59)]
26.Bc6 Qb6? [26...Qd8 Necessary, but still losing. \pm -(3.09)]
27.Qd7 Rd8 28.Qxe6+ Kh8 29.Nxb5 Be4 30.Nd6!
Diagram



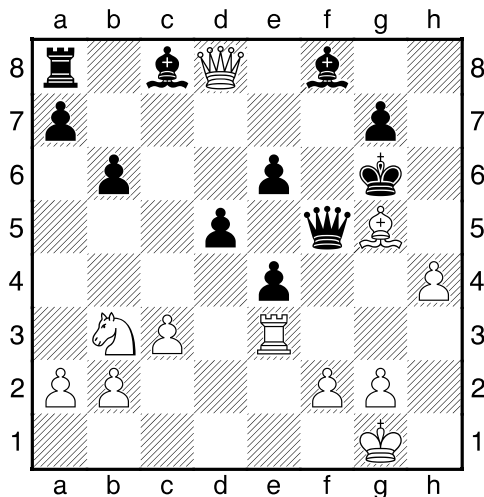
16.Rxe5?! [16.Qe2 Better 16...Bd6 17.f4 Nf7 18.Qh5 Bd7 19.Bg6 Re7 20.Be3 Kg8 21.Nd4 \pm -(1.48)]
16...fxe5 17.Bg6= Bd6? Diagram



30...h6 31.Bxe4 Rxd6 32.Qxf5 g6 33.Qf8+ Kh7 34.Qf7+ Kh8 35.Bg3 Re6 36.Bxg6 1-0



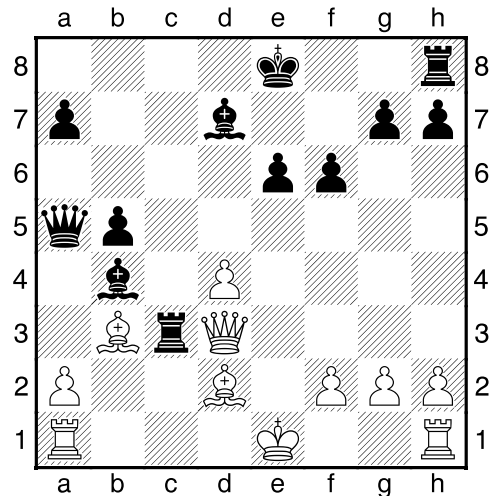
[17...Bf6=] 18.Bxe8? [18.Qe2 Re7? (18...Be7 19.Qxe5 Bf6 20.Qh5 Ke7 21.Bxe8 Qxe8 22.Qe2 +-(1.80)) 19.Qh5! Mate in 7] 18...Qxe8 19.Qh7 Qf7 20.Bg5 Qf5 21.Qh8+ Kf7 22.Qd8 Bf8 23.Re1 Kg6 24.h4 b6 25.Re3 e4 Diagram



26.Rg3 No moves recorded after this. White is winning but only +-(2.02) 1-0

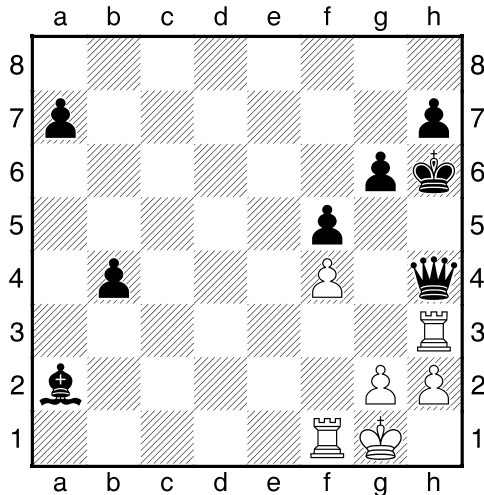
(11) Andrew Simmons (1765) – Abhishek Mallela (2107)

New Year Bash (2), 04.01.2014
 B22: Sicilian: 2 c3 1.e4 c5 2.Nf3 d6 3.c3 Nf6 4.e5 Nd5 5.d4 cxd4 6.cxd4 e6 7.Nc3 Nxc3 8.bxc3 Nc6 9.Bf4 last book move 9...Qa5 10.Qd2 dxe5 11.Nxe5 Nxe5 12.Bxe5 f6 13.Bf4 Bd7 14.Bc4 Rc8 15.Qd3? [15.Bd3 Rxc3 16.0-0 ♣(-1.24); 15.Bb3 Qxc3 16.Qxc3 Rxc3 ♣(-1.26)] 15...b5 16.Bb3 Rxc3 17.Bd2 Bb4 Diagram



18.Qe2? Losing move. [18.Bxc3 Much better. 18...Bxc3+ 19.Ke2 Bxa1 20.Rxa1 ♣(-1.10)] 18...Rxb3 19.0-0 Rb2 20.Bxb4 Qxb4 21.Qh5+ g6 22.Qh6 Kf7 23.Qe3 Rc8 24.d5 Qc5 25.dxe6+ Bxe6 26.Qh6 Kg8 27.Rae1 Bc4 28.Rc1 Qg5

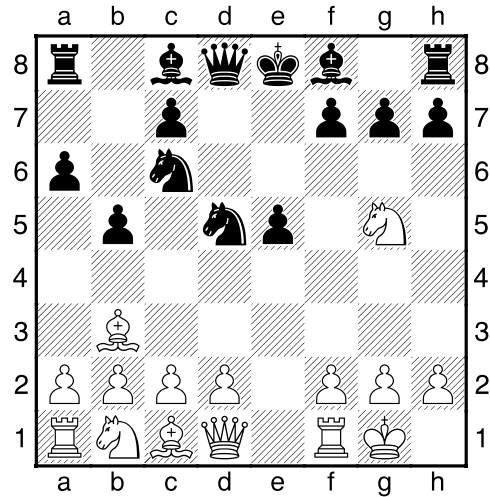
29.Qh3 f5 30.Qa3 Rxa2
 31.Qxa2 Bxa2 32.Rxc8+ Kg7
 33.Rc7+ Kh6 34.f4 Qh4
 35.Rc3 b4 36.Rh3 Diagram



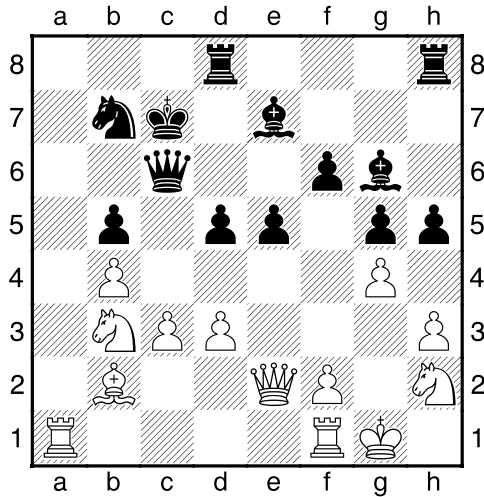
36...Qxh3! 37.gxh3 b3 38.Rf2
 a5 0-1

**(12) Sam Un (1760) –
 Bryan Jiang (1595)**

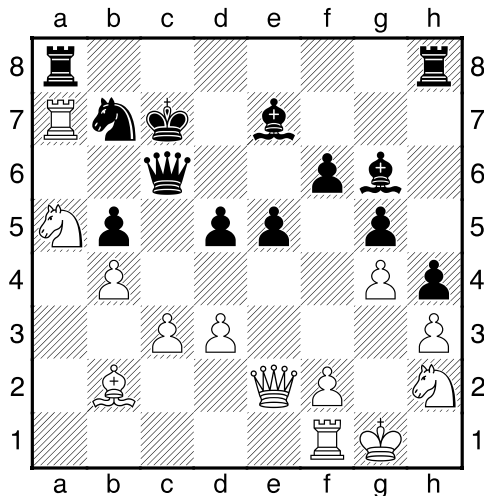
New Year Bash (4), 04.01.2014
 C78: Ruy Lopez: Archangelsk
 and Möller Defences 1.e4 e5
 2.Nf3 Nc6 3.Bb5 a6 4.Ba4 Nf6
 5.0-0 b5 6.Bb3 d6 7.Ng5 d5
 8.exd5 Nxd5 Last book move.
 Diagram



9.d3? [9.Nxf7! White missed
 this. It is a little like a Fried
 Liver attack. 9...Kxf7 10.Qf3+
 Ke6 11.Nc3 Nce7 12.d4 c6
 13.dxe5 Bb7 14.Bd2 +-(2.92)]
 9...f6 10.Nf3 Bg4 11.h3 Bh5
 12.c3 g5 13.g4 Bg6= 14.Nh2
 Na5 15.Bc2 h5 16.b4 Nb7
 17.Qf3 c6 18.Bb3 Qd6
 19.Bxd5 cxd5 20.Nd2 0-0-0
 21.a4 Be7 22.axb5 axb5
 23.Qe2 Actually, it is Black
 winning here. +-(−2.80)
 23...Qc6 24.Bb2 Kc7 25.Nb3
 Diagram



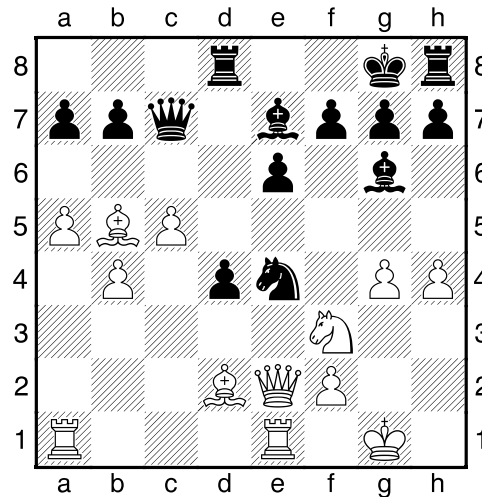
25...h4? Gives away black's advantage. Black is losing now. Black needed to open up white's "h" file. [25...hxg4!]
26.Ra7 Ra8 27.Na5 Diagram



27...Qe8? [27...Rxa7 Better to give up queen for rook and knight. 28.Nxc6 Kxc6 +-(2.54)]
28.Rxb7+ Kc8 29.Rb6 Bd8 30.Rd6 Kc7 31.Rxd5 Bf7 32.Rc5+ Kb8 33.Nc6+ 1-0

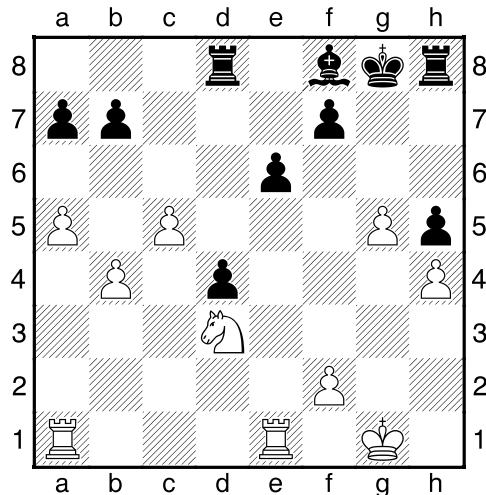
(13) Jason Qian (1670) – David Sayler (1706)

New Year Bash (3), 04.01.2014
 B17: Caro-Kann: Modern Line (4...Nd7) **1.e4 c6 2.d4 d5 3.Nc3 dxe4 4.Nxe4 Nd7 5.Nf3 Ngf6 6.Nxf6+ Nxf6 7.Bc4 Bg4 last book move 8.Be3 e6 9.0-0 Be7 10.h3 Bh5 11.c3 Qc7 12.Bd3 Nd5 13.Bd2 Rd8 14.a4 c5 15.Bb5+ Kf8 16.c4 Nf6 17.a5 cxd4 18.Re1 Bc5 19.b4 Be7 20.c5 Bg6 21.g4 Ne4 22.h4 Kg8 23.Qe2** Diagram



23...Nxd2 [23...d3! It is difficult to see this variation that results in advantage for black as variation is several moves long.
 24.Qe3 a6 25.Bc4 Nxd2 26.Qxd2 Bd6 27.h5 Bf4 28.Qc3 d2 29.Red1 Be4 30.Nxd2 Be5 31.Qe3 Bh2+ 32.Kf1 Bc2 33.Qe2 (33.Re1? Bf4!)]

33...Bxd1 34.Rxd1 g6 -+(-1.89)
 24.Qxd2 h5 25.g5= Bf5
 26.Bd3 Bg4 27.Ne5 g6 28.Qf4
 Bf5 29.Nxg6! Qxf4 30.Nxf4
 Bxd3 31.Nxd3 Bf8? Diagram

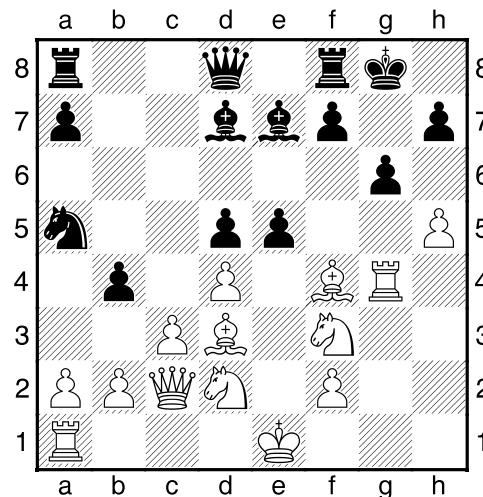


[31...a6 32.Re4 Kg7 33.Rd1
 Rd7 34.Kg2 Rhd8 Still losing
 slightly but better. +-(-1.51)]
32.Rad1?! [32.a6! Rd7 33.b5
 bxa6 34.c6 Rc7 35.Rxa6 +-
 (3.25)] **32...Bg7 33.Re4 Rd5**
34.Nf4 Rd7 35.Kg2 e5 36.Nd3
Rd5 [36...f5 Better. 37.gxf6
 Bxf6 38.Nxe5 Bxe5 39.Rxe5
 Kg7 40.b5 +-(-1.84)] **37.Rde1**
Kh7 38.Nxe5 Bxe5 39.Rxe5
Rxe5 40.Rxe5 Rd8 41.Kf1 1-0

**(14) Jason Wawrzaszek
 (1997) – Zach Schuh
 (1694)**

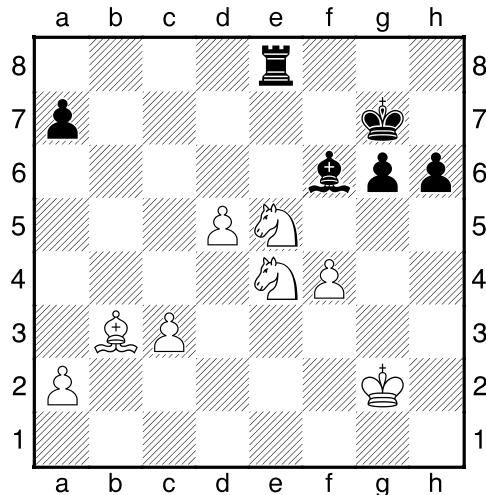
New Year Bash (3), 04.01.2014
 B13: Caro-Kann: Exchange
 Variation and Panov-Botvinnik
 Attack **1.e4 c6 2.d4 d5 3.exd5**

cxd5 4.Bd3 Nc6 5.c3 Nf6
6.Bf4 Bg4 7.Qb3 Na5 8.Qa4+
Bd7 9.Qc2 e6 10.Nf3 last book
 move **10...Be7 11.Nbd2 0-0**
12.g4= g6 13.Rg1 b5 14.h4 b4
15.h5 Nxg4? A slightly flawed
 plan based on discovered
 attack. **16.Rxg4 e5** Diagram



17.Nxe5 Bxg4 18.Nxg4 bxc3
19.bxc3 Bg5 20.Be5 Qe7
21.Kf1?! [21.Qa4 gxh5
 (21...Nb7 22.Qc6 Rac8
 23.Qxd5 Rfd8 24.Qf3 +-(-3.89))
 22.Ne3 f6 23.Qxa5 fxe5
 24.Qxd5+ Kh8 25.Qxe5+ Qxe5
 26.dxe5 +-(-2.92)] **21...Qe6**
22.f3 Nc6 23.Re1 Qc8 24.hxg6
fxg6 25.Kg2 Ne7 26.Bd6 Rf7
 [26...Nf5 Slightly better move
 according to Fritz 27.Bxf8 Nh4+
 28.Kh3 Qxf8 +-(-3.06)] **27.Qb3**
Qd8 28.Bxe7 Rxe7 29.Rxe7
Bxe7 30.Be4 Rb8 31.Qxd5+
Qxd5 32.Bxd5+ Kg7 33.Bb3

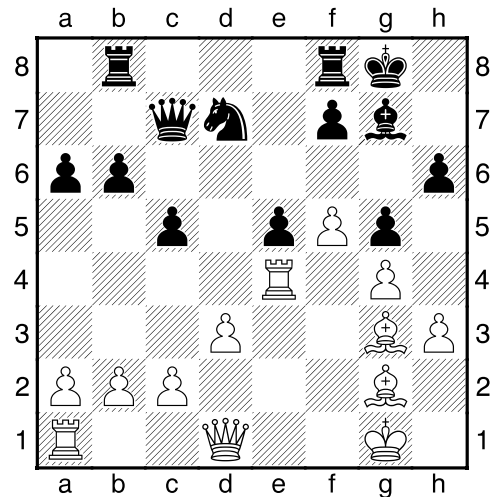
Rd8 34.Ne5 Bf6 35.Ne4 Re8
36.f4 h6 37.d5 Diagram



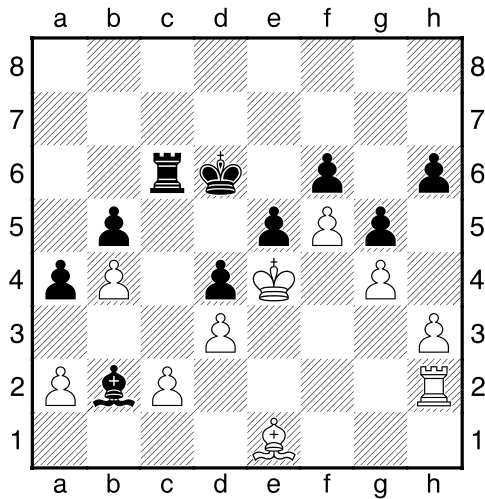
37...g5?! [37...Bxe5 Better, though still losing. 38.fxe5 Rxe5 39.Kf3 +-(3.53)] 38.Ba4 Re7 39.d6 1-0

(15) Mohammadreza Hajairbabi (1953) – Jason Qian (1670)

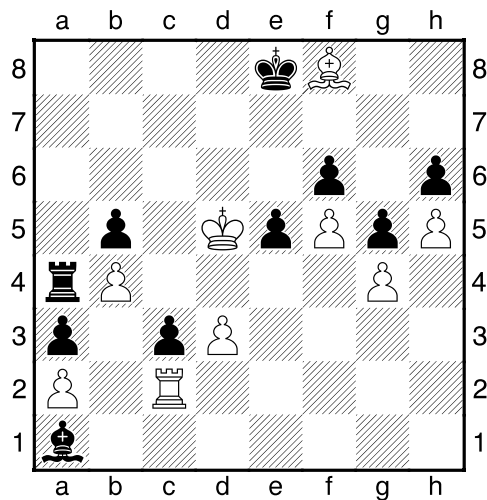
New Year Bash (1), 04.01.2014
B25: Closed Sicilian: 3 g3, lines without early Be3 1.e4 c5 2.Nc3 a6 3.f4 Nc6 4.Nf3 d6 5.g3 g6 6.Bg2 Bg7 7.0-0 Nf6 8.d3 last book move 8...0-0 9.h3 e5 10.Ne2 Nh5 11.fxe5 Nxe5 12.Nxe5 dxe5 13.g4 Nf6 14.Bg5 h6 15.Bh4 g5 16.Bf2 b6 17.Ng3 Be6 18.Nf5 Bxf5 19.exf5 Rb8 20.Re1 Qc7 21.Bg3 Nd7 22.Re4 Diagram



22...f6?! Closing off the dark squared bishop might not be good. [22...b5 Better; 22...Rfe8 Better] 23.Ra4 a5 24.Bd5+ Kh8 25.Qf3 b5 26.Re4 Nb6 27.Be6 Rfe8 28.b3 Rbd8 29.Rd1 Nd5 30.Bxd5 [30.Rxe5 Another idea. Fritz seems to think white gets enough compensation for the exchange. White does get the two bishops. 30...fxe5 31.Bxd5 ±(0.95)] 30...Rxd5 31.Kg2 Red8 32.Qe3?! [32.Bf2 Better according to Fritz] 32...Qc6= 33.Kh2 Rd4 34.Rxd4 cxd4 35.Qf2 Rc8 36.Rd2 Bf8 37.Qg2 Bb4 38.Qxc6 Rxc6 39.Re2 Kg7 40.Kg2 Kf7 41.Kf3 Ke7 42.Ke4 Kd6 43.Rh2 Ba3 44.Be1 a4 45.b4 Bb2 Diagram



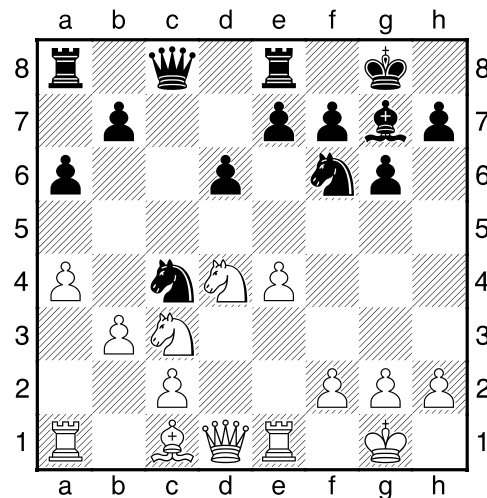
46.c4? dxc3 47.Rc2 a3 48.h4 Rc7 49.h5 Rc6 50.Bg3 Rc8 51.Be1 Ba1 52.Bg3 Ke7 53.Be1 Difficult for black to find a plan to take advantage of extra pawn. 53...Ra8 [53...Kd7 Another plan that doesn't make much progress. 54.Bf2 Bb2 55.Be1 Kd6 56.Bg3 Kc6 57.Bf2 Rd8 58.Bc5 $\mp(-1.27)$] 54.Bf2 Kd6 55.Bc5+ Kc6 56.Be7 Ra4 57.Bf8 Kd7 58.Kd5 Ke8 Diagram



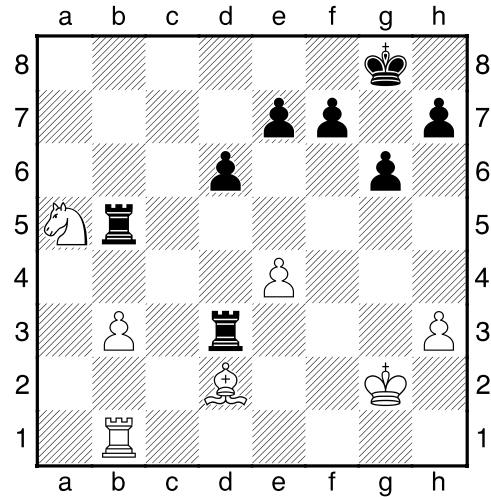
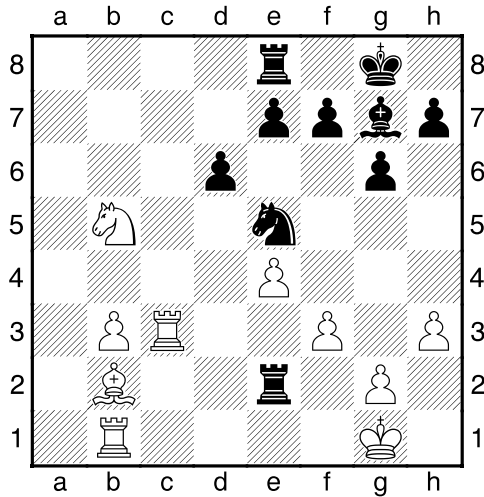
59.Bc5 [59.Bxh6 Ra7 60.Ke6 Ra6+ 61.Kd5 Rb6 62.Kc5 Rb7 Still not making much progress.] 59...Ra8 60.Ke4 Kd7 1/2-1/2

(16) Matthew Webb (1221) –Oliver Ashworth (unrated)

New Year Bash (1), 04.01.2014 B50: Sicilian: 2...d6, Miscellaneous 1.e4 c5 2.Nf3 d6 3.Bb5+ Bd7 4.Nc3 Nf6 last book move 5.d3 Qa5 6.Bxd7+ Nbx7 7.0-0 g6 8.Re1 Bg7 9.Bd2 Qc7 10.a4 0-0 11.Nb5 Qc8 12.d4 a6 13.Nc3 cxd4 14.Nxd4 Ne5 15.Bf4 Nc4 16.Bc1 Re8 17.b3= Diagram



17...Ne5 18.Bb2 Nc6 19.Nxc6 Qxc6 20.h3 Nd7 21.Re3 Rac8 22.Rb1 b5 23.Qe2 Ne5 24.axb5 axb5 25.Qxb5 Qxb5 26.Nxb5 Rxc2 27.Rc3 Re2 28.f3? Diagram



28...Nxf3+! Discovered attack.
29.gxf3 [29.Rxf3 No better.
 29...Rxb2 30.Rxb2 Bxb2 -+(-1.87)]
29...Bxc3? [29...Rb8 Better
 30.b4 h5 31.Rb3 Rxb5 \mp -1.27)]
30.Bxc3 [30.Nxc3 Better]
30...Rb8 31.Na7?
 [31.Nd4= Better 31...Re3
 32.Bd2 Rd3 33.Nc6 Rxb3
 34.Nxe7+ Kf8 35.Rxb3 Rxb3=]
31...Re3 32.Nc6 Rb7 33.Na5 Rb5
34.Bd2 Rxf3 35.Kg2
 [35.Nc6 Slightly better
 35...Rxb3 36.Nxe7+ Kg7
 37.Rxb3 Rxb3 -+(-1.65)]
35...Rd3 Diagram

36.Be1 No more moves recorded after this. Black has an advantage. -+(-2.19) **0-1**

2014 Kansas Open & Kansas Blitz Championship

Sponsored by the Kansas Chess Association

www.kansaschess.org

Dates: July 18 to July 20, 2014

Location: Holiday Inn, 8787 Reeder Rd., I-35 and 87th St, Overland Park, KS- Hotel rooms at Holiday Inn up to 4 in a room: \$89 per room (\$109 for suite) per night if reservations are made by 6/18- guaranteed. After that date special rate on availability basis- Call Holiday Inn at 913-888-8440 or 888-825-7538 (ask for Kansas Chess Association-Kansas Open when calling toll free number) Free Wifi in all rooms, Complementary parking

Map <http://www.holidayinn.com/hotels/us/en/overland-park/mkcpk/hoteldetail/directions>

Note: FREE KCA Members Breakfast will be held Sunday, July 20, 7:30 - 9 AM, in conjunction with the KCA Annual Meeting, which runs 8 - 9 AM, in the main playing area. KCA membership must be current to vote and eat for free. Please RSVP with advance entry or on-site, as we must provide a head count. Non-KCA members may eat for \$10. Attendance limited to 60.

Kansas Open 7/19 & 7/20/14

Entry Fee: \$45 advance, must be postmarked by mail by July 12th, \$55 thereafter, including onsite (no e-mail entries to get early rate- I need a check in the mail)

Special Advance Discount: There is an extra \$10 discount for those entering both the Kansas Open and the Kansas Blitz, in advance. **Scholastic Discount:** Scholastic players (K-12 students) who do NOT want to compete for cash prizes but instead play for one of three plaques, enter the Reserve section for \$10. Scholastics can play in Open section for \$10, but there are no plaques except for State Champion (see special note, next page, about arrangement with Kansas Scholastic Chess Association- KSCA- for possible free entry).

USCF & KCA membership required: KCA Membership is \$10 for family, \$7 for adults, and \$5 for juniors (18 and under). USCF and KCA memberships sold onsite. Kansas Chess Association membership required for all Kansas residents. Out of state players welcome.

On-site Registration: 6:00-7:00pm on 7/18 or 8:30am-9:30am on 7/19

5 Round SS: 7/19 - 10:00, 2:30, 7:00; 7/20 - 9:30, 2:00 (last round could start earlier). A single, 1/2 point bye is available any round upon request, but must be requested before the start of the 1st round.

Time Controls (for both Open and Reserve sections): **Game in 120 minutes, with 5 second delay**

Two Sections: Open Section - Open to all, Reserve Section - 1799, and below

Prizes: Prizes based on 80 total non-scholastic rate entries in both sections (Open + Reserve)

Open Section: 1st = \$320, 2nd = \$160, and 3rd = \$80

Class A & Below: 1st = \$160, 2nd = \$80, 3rd = \$40

Bonus prize of \$25 and plaque to top player from Kansas (State Champion)

Reserve Section: 1st = \$320, 2nd = \$160, 3rd = \$80

1599-1400: 1st = \$160, 2nd = \$80, 3rd = \$40

1399 & below & Unrated: 1st = \$160, 2nd = \$80, 3rd = \$40

Bonus prize of \$25 and plaque to top player from Kansas

NOTE SPECIAL ARRANGEMENTS FOR SCHOLASTIC PLAYERS WHO MUST PLAY IN STATE
SCHOLASTIC TOURNEY TO QUALIFY- KSCA (scholastic) players may play in the Kansas Open
this summer for free (only open or reserve, not quick or bughouse).
To play free the player has to meet the following list of the qualifications

1. Play in the KSCA state tournament- March 8, 2014 in Lawrence, KS
2. Free entry is only for scholastic rate, may choose to play at the adult rate
3. Must pre-register for the event (not onsite)
4. Have a current USCF membership, may purchase at tournament. (Cheaper online) See [USCF Membership](#)
5. Must have a current KCA membership, may purchase at tournament (recommend advance purchase)
6. Free Entry not eligible for side events (not blitz or bughouse), may still play in those events

Kansas Blitz Chess Championship 7/18/14

Entry Fee: \$25 advance, must be postmarked by July 14th, \$35 thereafter including onsite
USCF Membership- required of all. **KCA membership-** required of all Kansas residents (both sold onsite)

Scholastic Discount: Scholastic players (K-12 students only) who do NOT want to be eligible for cash prizes and instead play for one of three plaques, the entry fee is \$10 (no free entry for scholastic players in this event)

Onsite Registration: 6-7 PM on 7/18

5 rounds SS: 7, 7:30, 8, 8:30, 9 PM

Time Control: Game in 10 using USCF Quick Ratings, if a Blitz rating is unavailable (no time delay)

Prizes All prizes for Blitz Championship are based on 40 non-scholastic rate entries:

1st = 240, 2nd = \$160, 3rd = 80

Class A, B, and (C and below, and Unrated) each 1st = \$80, 2nd = \$40

Bonus Prize of \$25 and plaque to top player from Kansas (State Blitz Chess Champion)

Prize money for Blitz will not be paid until 7/19/13.

Kansas Bughouse Championship-7/18 (note time start change from 2013)

Entry Fee: \$10 per person (\$20 total for two-player team - pay on-site)

USCF & KCA membership: are **NOT** required

Onsite Registration: 3:30 pm till 4 pm. (CHANGE FROM PREVIOUS YEARS!!!!!!!!!!!!!!)

Either 4 or 5 Round SS: Starts at 4 pm on 7/18 - number of rounds at discretion of TD

Time Control: G/5 minutes, blitz with no time delay, two games versus each team

Prizes: 75% entry fees go towards Prize fund: plaques to each member of winning team
(see next page for Bughouse rules)

All Entries: Laurence Coker, 8013 W. 145th St, Overland Park, KS 66223
Call 913-851-1583 or email wlcoker7@hotmail.com
Checks should be made out to "Kansas Chess Association"

NOTE: Tie-breaks if necessary to determine Blitz, Open, and Reserve champions: 1) Solkoff, (2) Cumulative, (3) Modified Median and (4) Median

BUGHOUSE RULES- All standard blitz chess rules apply with addition to the following:

1. Can place check or mate with any piece.
2. Can only place pawns on the 2nd-7th rank.
3. Clock move. A move is not completed until you hit your clock. This also means that you cannot give a captured piece to your partner until you hit your clock.
4. When a promoted pawn is captured, it becomes a pawn again when given to your partner.
5. You cannot hide your pieces!! The first offense is a warning. The second is an automatic forfeit.
6. Cell phones turned off. If a phone rings while a game is in progress, the game will be forfeited by the offender on the first offense.
7. You can not drop capture. You can only drop pieces on an unoccupied square.
8. You can communicate with only your partner during your game.
9. While you can tell your partner where to move, you cannot physically touch your partner's board or the pieces on it.
10. Have fun.

THE END