

Plains Chess: Fall/Winter Edition

Editors: Brian Yang & Kyle Camarda

2010-2011



*"...to broaden and develop
chess as a significant cultural
art in Kansas."*

**The Official Publication of the
Kansas Chess Association**

Table of Contents

Table of Contents

	PAGE
FROM THE EDITOR	2
2010-2011 KCA OFFICERS	3
MEMBERSHIP.....	4
KANSAS STATE CHAMPIONS.....	5
TOP 25 KANSAS CHESS PLAYERS (JANUARY)	6
LINDSBORG QUADS CROSSTABLES – LAURENCE COKER	7
2010 KANSAS DENKER AND ALL-GIRLS CHAMPIONS	9
BRIAN YANG’S GRADUATION ARTICLE	11
BRIAN YANG’S GRADUATION GAMES	14
BRIAN YANG’S GRADUATION CROSSTABLE.....	16
2010 KANSAS OPEN ARTICLE.....	18
2010 KANSAS OPEN CROSSTABLES.....	20
KCA 2010 ANNUAL MEETING MINUTES.....	24
CHESS PUZZLE.....	26

From the Editor

From the Editor

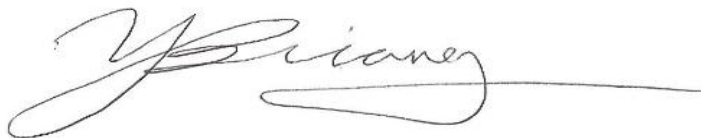
Hello Kansas Chess Players~!

Welcome to this year's first issue of *Plains Chess: Fall / Winter Edition*. This year, I will have an extra set of hands to help me edit and format *Plains Chess*, namely Kyle Camarda. He and I are looking forward in seeing your Kansas chess games. Any games should be submitted to either of us in any format (.pgn, .doc, or even a scoresheet mailed to us!). As a KCA member, you are entitled to your space in this magazine so you may even write an article or two about your games and we'll put it in this magazine!

In this issue, we will cover some the 2010 Kansas Open in Lindsborg. It was my first Kansas Open tournament attendance and it was a thrill to be Assistant TD and a player in the reserve section. In addition, as mentioned in the previous issue, I will go back and fully cover some KCA Chess events that happened in during the Spring that deserve some recognition, namely Lindsborg Quads and our Kansas Denker and All-Girl Representatives.

For the 2010-2011 chess season, our sub-association – Kansas Scholastic Chess Association (KSCA) – will be running scholastic tournaments across the state almost every Saturday during the school year. During such tournaments, if the organizer so chooses, there might be a 4-round adult USCF tournament running concurrently that one may participate in. Go to <http://www.ksca.us/schedule.htm> for a complete tournament schedule. For scholastic tournaments in the Lawrence area, I will definitely try to make those tournaments have an adult USCF section as I am a USCF TD at KU. (For more information, <http://kansaschess.org/htdocs/2009SummerPlainsChess.pdf> pg 17).

Looking forward to seeing all of you at Kansas Chess Association chess events~!



Brian Yang
2010-2011 KCA Vice President / Co-Editor

P.S. Kansas Open 2010 Games will be featured in a special bulletin to be released late February.

2010-2011 KCA Officers

2010-2011 KCA Officers



Tom Brownscombe – **President**

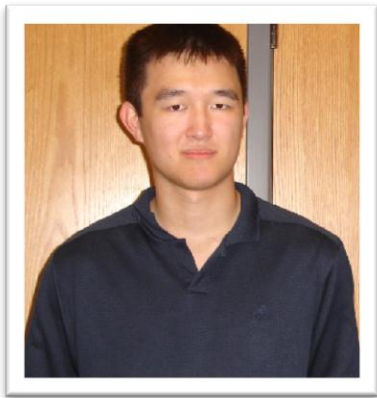
PO Box 335 Lindsborg, Kansas 67456

E-mail: tkbrownscombe@cox.net

Brian Yang – **Vice President,
Co-Editor of *Plains Chess***

8109 W. 130th Street Overland Park,
KS 66213

Email: yang.brian@ymail.com



Laurence Coker – **Secretary,
Treasurer, Webmaster**

8013 W. 145th Street Overland Park,
KS 66223

Email: wlcoker7@hotmail.com

Kyle Camarda – **Co-Editor of
*Plains Chess***

4132E Learned Hall 1530 W 15th St
Lawrence, KS 66045

Email: camarda@ku.edu



Membership Membership

A Kansas Chess Association (KCA) membership has many privileges including the following: the right to play in all KCA-sponsored tournaments, including State Championship titled events; web/mail copies of KCA's magazine "Plains Chess"; vote in the Annual Meeting; publish chess materials in "Plains Chess".

Membership Options	Cost (1 year)
Regular Adult <i>Ages 18+; full privileges</i>	\$7.00
Junior <i>Under 18; full privileges</i>	\$5.00
Family <i>Includes 3 membership, must be living in the same residence</i>	\$10.00
Patron <i>Includes 2 year membership; full page available & name in "Plains Chess"</i>	\$50.00
Contributor <i>Includes 2 year membership; name in "Plains Chess"</i>	\$25.00

If you would like to join the KCA, fill out a membership form available on our website (www.kansaschess.org) and mail it along with dues to the KCA treasurer:

Laurence Coker
8013 W. 145th Street
Overland Park KS 66223

SPECIAL RECOGNITION THESE PATRONS AND CONTRIBUTORS

PATRONS:

John Stang's Family – '04-'07

Thomas Glenn – '05-'08

Rick Hodges – '04-'09

Lyle Taylor – '07-'10

CONTRIBUTORS:

Ron Chaika – '04-'09

George Verhage – '04-'05; '07-'11

Joe Ciccio – '04-'05

Mila Mokriak – '05-'06

Jonathan Goering – '07-'08

SPECIAL DONATION:

Ron Chaika - \$200

Ron Pasik – '07-'08

Ben McGreggor – '07-'08

Irwin Fisk – '08-'09

Bradford Blake '08-'09

Kansas State Champions

2010- Maxx Coleman
2009- Tom Brownscombe
2008- Christopher Purdy
2007- Tom Brownscombe
2006- Maxx Coleman
2005- Mila Mokriak
2004- Deepyaman Datta
2003- Andrew Cherepanov
2002- Kyle Camarda
2001- Robert Glick
2000- Tim Steiner
1999- Alan Piper
1998- Ryan Porter
1997- Alan Piper
1996- Jason Kasick
1995- Ryan Porter
1994- Fred Galvin
1991-'93 Alan Piper
1990- Charles Aldelman
1989- Alan Piper
1982-'88- Michael Weirzbicki
1981- Bradford Blake, Michael Weirzbicki
1980- Wesley Koehler, Bruce Worner
1979- David Marshall, Don Oswald
Dan Prichard, Thomas Raikes
1978- Jack McClurg
1977- Wesley Koehler
1976- Carl Sloan
1972-'75 -Dan Prichard
1971- Don McCrary
1970- Gary Watts



Tom Brownscombe – 2007 & 2009



Tim Steiner - 2000



Maxx Coleman – 2006 & 2010

1967-'69- Randy Mills
1965- Virgil Harris
1964- Fred Bristol
1963- Robert Hart
1962- Gayle Hershey
1959-'60- George Krauss, Jr.
1958- Bert Brice Nash
1957- Wesley Perkins
1956- Carl Weberg
1955- Bert Brice Nash
1954- Carl Weberg
1953- Bert Brice Nash
1952- Jim Callis
1951- Henry Georgi
1950- Kirke Mechem
1949- Bert Brice Nash
1948- Arthur R. Self
1947- Jasper M. Stull
1907- Henry Woodson Rhea



Kyle Camarda - 2002

If anyone having information on Kansas Chess Champions for the missing years, contact Laurence Coker at wlcoker@hotmail.com

Top 25 Kansas Chess Players

Top 25 Kansas Chess Players



Rank	Name	Published Rating (January)
1	IM CONRAD HOLT	2430
2	FM TOM BROWNSCOMBE	2200
3	MAXX W COLEMAN	2187
4	TIM C STEINER	2081
5	JASON ADAM KASICK	2073
6	ANDREW LATHAM	2046
7	JASON WAWRZASZEK	2015
8	CHRIS WILBEN CLAASSEN	2009
9	JOSE GATICA	1946
10	DANIEL L GOLLUB	1935
11	DAVID BLAIR	1925
12	JOHN SCHULLER	1920
13	ERIC DANIEL SHOEMAKER	1898
14	TAIMOOR NOOR	1898
15	TONY R CHENG	1881
16	ALAN L VON AH	1878
17	TERRY WRIGHT	1869
18	JAMIE E FERNANDEZ	1859
19	KYLE CAMARDA	1836
20	DAN B HOLMES	1825
21	SALVADOR MARTINEZ JR JR	1798
22	BEN CHE CLAYTON	1783
23	SAM N UN	1757
24	CURTIS HARTMAN	1744
25	ERIC BERMAN	1741

Lindsborg Quads

Lindsborg Quads

By: Laurence Coker

2010 LINDSBORG QUADS March 27, 2010



Section A					
Name	Rating	Rd1	Rd2	Rd3	Total
1. Terry Wright	1873	W4	W2	W3	3.0
2. Tom Phillips	1700	W3	L1	W4	2.0
3. Thornton Bonner	1747	L2	W4	L1	1.0
4. Gabriel Purdy	1335	L1	L3	L2	0.0



Section B					
1. Peter Bradshaw	1528	W2	W3	L4	2.0
2. Elijay Purdy	1279	L1	W4	W3	2.0
3. Bryan Liu Jiang	1348	W4	L1	L2	1.0
4. Andrew Guy Ritter	1316	L3	L2	W1	1.0

Section C					
1. David Purdy	1338	W3	L2	W4	2.0
2. Joshua C Lewis	1175	L4	W1	W3	2.0
3. Dr. Letlhogolonolo Tlhabano	Unr	L1	W4	L2	1.0
4. Jim Dahlsten	Unr	W2	L3	L1	1.0

Section D					
1. Braden Johnson	912	D2	W3	W4	2.5
2. Austin Bailey	999	D1	L4	W3	1.5
3. Christopher J Anton	1058	W4	L1	L2	1.0
4. James Marusa Myose	920	L3	W2	L1	1.0

Section E					
1. Nicholas Thomas	549	W2	W4	W3	3.0
2. Benny Lopez	unr	L1	W3	W4	2.0
3. Floyd Geasland	826	W4	L2	L1	1.0
4. Tamara Dahlsten	unr	L3	L1	L2	0.0

Section F					
1. Joseph Andrew Miller	520	W3	W2	W4	3.0
2. Laurence Dahlsten	unr	W7	L1	W5	2.0
3. Jonathan Dahlsten	unr	L1	W6	W7	2.0
4. Maverick L. L. Lewis	345	BYE	W5	L1	2.0
5. Mario A Richardson	unr	W6	L4	L2	1.0
6. Quade Leonard	unr	L5	L3	BYE	1.0
7. Ty Campbell	unr	L2	BYE	L3	1.0

April 27th, 2010



TOP section					
Name	Rating	Rd1	Rd2	Rd3	Total
1. Terry Wright	1885	D3	W4	W2	2.5
2. Jason Wawrzaszek	2018	W4	W3	L1	2.0
3. Thornton Bonner	1657	D1	L2	W4	1.5
4. Tom Phillips	1708	L2	L1	L3	0.0



Section B					
1. Peter Bradshaw	1518	W3	W4	L2	2.0
2. Duane Tate	1441	W4	L3	W1	2.0
3. Bryan Liu Jiang	1334	L1	W2	W4	2.0
4. Daryl Fouard	1474	L2	L1	L3	0.0

Section C					
1. Andrew Guy Ritter	1309	W3	W4	W2	3.0
2. Joshua C Lewis	1223	W4	D3	L1	1.5
3. Austin Bailey	996	L1	D2	W4	1.5
4. James Marusa Myose	914	L2	L1	L3	0.0

Section D					
1. Vankata Malladi	1126	D3	W4	W2	2.5
2. Joseph Andrew Miller	883	W4	W3	L1	2.0
3. Sarah Al Myose	887	D1	L2	W4	1.5
4. Maverick L. L. Lewis	371	L2	L1	L3	0.0

2010 LINDSBORG QUADS continued May 22nd, 2010

Top section	Rating	Rd1	Rd2	Rd3	Total
1. Jason Wawrzaszek	2004	W4	W3	W2	3.0
2. Terry Wright	1934	W3	W4	L1	2.0
3. Tom Phillips	1700	L2	L1	W4	1.0
4. Thorton Bonner	1714	L1	L2	L3	0.0

Section B					
1. Duane Tate	1471	W3	W2	L4	2.0
2. Peter Bradshaw	1523	W4	L1	D3	1.5
3. Brian Jiang	1397	L1	W4	D2	1.5
4. Daryl Fourad	1420	L2	L3	W1	1.0

Section C					
1. Venkata Malladi	1121	W4	W2	W3	3.0
2. Andrew Ritter	1346	W3	L1	L4	1.0
3. Emily Hasch	767	L2	W4	L1	1.0
4. Rachel Hasch	616	L1	L3	W2	1.0

Section D					
1. Joseph Miller	908	W4	W2	W3	3.0
2. Shrivatsa Malladi	661	W3	L1	W4	2.0
3. Jonathan Dahlsten	453	L2	W4	L1	1.0
4. Emily Daniels	unr	L1	L3	L2	0.0

Section E					
1. Marverick L. L. Lewis	377	W4	W2	W3	3.0
2. Tristan Donaldson	242	L3	L1	W4	1.0
3. Gwendoyne Stiles	105	W2	L4	L1	1.0
4. Yohannes Apel	101	L1	W3	L2	1.0

JUNE 26th, 2010

Group A					
Player	Rating	Rd1	Rd2	Rd3	Total
1. Jason Wawrzaszek	2001	W3	W2	W4	3.0
2. Terry Wright	1892	W4	L1	W3	2.0
3. Tom Phillips	1703	L1	W4	L2	1.0
4. Duane Tate	1486	L2	L3	L1	0.0

Group B					
1. Andrew Ritter	1281	W2	W3	W4	3.0
2. Daryl Fouard	1389	L1	W5	-B-	2.0
3. Joseph A Miller	927	W4	L1	W5	2.0
4. Bryan Jiang	1409	L3	-B-	L1	1.0
5. Maverick L L Lewis	449	-B-	L2	L3	1.0



2010 Kansas Denker and Polgar Representatives

2010 Kansas Denker and Polgar Representatives

By: Brian Yang

The Kansas Scholastic Chess Association (KSCA) has been given the power to determine Kansas's Denker and Polgar representatives at their annual tournaments. At the annual KSCA state chess tournament, Andrew Latham became the 2010 Kansas Denker Representative after going undefeated 6-0 at Blue Valley Northwest High School; runner-ups were Roy Wedge and Thomas Clark. The tournament gathered 162 players in the K-12 section. He later represented Kansas at Irvine, California at the Denker tournament placing 32nd out of 49 players. Below are two games where he won and drew:

Andrew Latham vs. Alexander P Wolf – Irvine US Open 2010 (Denker Tournament)

1.d4 Nf6 2.c4 e6 3.Nc3 Bb4 4.Bg5 h6 5.Bh4 c5 6.d5 g5 7. Bg3 Qa5 8.Be5 Qd8 9.a3 Bxc3+ 10.Bxc3 d6 11.e3 Nbd7 12.dxe6 fxe6 13.Qxd6 Qe7 14.Qxe7+ Kxe7 15.Bd3 Rf8 16.Nf3 b6 17.Ne5 Nxe5 18.Bxe5 Ng4 19.Bg3 Bg7 20.0-0 Rad8 21.Be2 Nf6 22.Rad1 Ne4 23.Rxd8 Rxd8 24.Rd1 Nxc3 25.hxg3 Rxd1+ 26.Bxd1 Be4 27.Kf1 Kd6 28.f3 Bd3+ 29.Be2 Bc2 30.Ke1 e5 31.e4 Ba4 32. Kd2 Ke6 33.Ke3 Kf6 34.f4 Bc6 35.Bg4 Ba4 36.b4 Bc6 37.Bc8 Ba4 38.f5 Bc6 39.b5 Be8 40.g4 Ke7 41.Be6 Kf6 42.Bd5 Ke7 43.Kd3 Kf6 44.Bc6 Bf7 45.Bd5 Be8 46.Kc3 Ke7 47.Kb3 Kf6 48.a4 h5 49.gxh5 Bxh5 50.a5 g4 51.axb6 axb6 52.Kc3 g3 53.Kd2 Bf3 1/2-1/2

Gerald Potorski vs. Andrew Latham – Irvine US Open 2010 (Denker Tournament)

1. e4 c6 2. d4 d5 3. exd5 cxd5 4. c4 Nf6 5. Nc3 Nc6 6. Nf3 Bg4 7. Qb3 Bxf3 8. gxf3 Nxd4 9. Qa4+ Qd7 10. Qd1 dxc4 11. Bxc4 e6 12. Be3 Nc6 13. Qe2 Bb4 14. Rd1 Qe7 15. O-O O-O 16. Ne4 Nxe4 17. fxe4 Bc5 18. f4 Rad8 19. Bb5 e5 20. Bxc6 Rxd1 21. Rxd1 exf4 22. Bxc5 Qxc5+ 23. Qf2 Qxf2+ 24. Kxf2 bxc6 25. Rd7 h6 26. Rc7 Rd8 27. Ke2 Rd4 28. Rxa7 Rxe4+ 29. Kf3 Rd4 30. a4 Rb4 31. a5 Rxb2 32. Ra8+ Kh7 33. a6 Rxh2 34. Kxf4 Ra2 0-1



Andrew Latham at the Kansas Open 2010

Emily Hasch became 2010 Kansas Polgar representative after going undefeated 4-0 at All-Girls state tournament; runner-up was Hannah Purdy and Sarah Myose. The tournament drew 20 Kansas female chess players. She later represented Kansas at GM Susan Polgar's invitational all-girls tournament. She placed 31st out of 41 players. Below is the game she won against Hannah Purdy to secure the Kansas Polgar position:

Emily Hasch (1030) – Hannah Purdy (1342) All-Girls State

1.e4 e6 2.Nf3 d5 3.Bb5+ c6 4.Bd3 dxe4 5.Bxe4 Nf6 6.Nc3 g6 7.d3 Bg7 8.0-0 0-0 9.Be3 Nxe4 10.dxe4 b6 11.Qc1 Bb7 12.Bh6 c5 13.Nb5 Bxe4 14.Rd1 Qc8 15.Nd6 Qc6 16.Bxg7 Kxg7 17.c4 Bxf3 18.Qc3+ f6 19.gxf3 Nd7 20.Qe3 Ne5 21.Ne4 Nxc4 22.Qc3 Ne5 23.Rd6 Qe8 24.f4 Ng4 25.Ng5 e5 26.Ne6+ Kg8 27.Nxf8 Qxf8 28.fxe5 Nxe5 29.Rad1 Kg7 30.Qh3 Nf7 31.Rd7 a6 32.Qe6 Rb8 33.Rc7 Qe8 34.Qxe8 Rxe8 35.Rdd7 Rf8 36.Kg2 g5 37.Kg3 Kg6 38.Re7 h5 39.Rc6 h4+ 40.Kh3 Rd8 41.Rxb6 Rd3+ 42.Re3 Rd6 43.Rxd6 Nxd6 ... time scramble 1-0



Emily Hasch (Middle) at the All-Girls 2010

Future Denker and Polgar representatives will be determined by KSCA tournaments. These tournaments are listed at www.kzca.us The state tournament is set to be hosted by Wichita State University on March 26; All-Girls is set March 26, 2011.

Brian Yang's Graduation Tournament

Brian Yang's Graduation Tournament

By: Brian Yang

After graduating from Blue Valley Northwest high school, students generally host "Open House" where friends and family celebrate this life milestone. As my celebration, I decided to host a tournament with food and drinks as my Open House, or free Chipotles for everyone~! It would then serve as both my friends from school and from the chess community.



This tournament was 5 rounds Swiss with time controls of Game 60. There were two scheduled breaks: one lunch and one "dinner/Open House". In the Open Section, Expert Tim Steiner won the tournament with an undefeated score of 4.5/5.0. In the reserve section, Jimmy Huggins and William Liu tied for 1st with a score 4.0/5.0.

The tournament drew 30 players with a guaranteed prize fund of \$500.00. This is my first chess tournament that I won where I guaranteed the prize fund in hopes of improving attendance. In addition, this tournament was sectioned off rather than my previous one-open-section tournaments. This produced more competitive games from the 1st round as players are not paired *lower*. Enjoy~ YBriang



One of my friends, Taj H. Samugol also contributed to the tournament by offering \$150 dollars in cash prizes. In order to inspire fighting chess, rather than boring Grandmasters 15-move drawn games, players can take the Taj H. Samugol's challenge. Here's how it works: the winners of each round will be put into a hat. A name will be pulled from the hat and that person will receive \$25 just for playing aggressive chess. Round 5 will be different as the winner of that particular hat drawing will receive \$50!





Brian Yang's Graduation Games

Brian Yang's Graduation Games

Annotated by Brian Yang w/ Deep Rybka

Unfortunately, I did not have carbon scoresheets at the tournament, however, our Open Section champion, Tim Steiner, graciously shares his games on that he played to snatch the title.

**Tim Steiner (2055) –
Andrew Latham (1866)
Round 1**

1. d4 Nf6 2. c4 e5 The opening is the Budapest's Opening. Black will win back the pawn with Nc6. **3.dxe5 Ng4 4. Bf4 g5 5. Bg3 Nc6 6. Nf3 Bg7 7. Qd5 d6 8. Nc3 Ngxe5 9. Nxe5 Nxe5 10. e3 c6 11. Qe4 O-O 12. f4 Qb6?!** Better would be Ng6, repositioning the knight and having threats down the e-file. **13.f5** could be played as an intermediate move, attacking the queen, follow with Ng4. **13. O-O-O f5 14. Qd4 Ng4 15. Qd2 Qxe3 16. Qxe3 Nxe3 17. Rxd6 g4 18. Kd2 Nxf1+ 19. Rxf1 Re8** Both players start to exchange into a drawish endgame. **20. Re1 Rxe1 21. Bxe1 Kf7 22. Bh4 Be6 23. b3 Bh6 24. Ne2 Bf8 25. Rd3 Bb4+ 26. Kc2 Re8 27. Nd4 a6 28. Re3 Bd6 29. Ne2 Bd7 30. Rxe8 Bxe8** Even with double

bishop pair, Black is not able to use them effectively as it is considered bad, controlling no space **31. Bf2 b5 32. g3 Bd7 33. Nc1 Ke6 34. Nd3 Bc8 35. Be1 Bd7 36. Bc3 Bc8 37. Be5 Bd7 38. Bxd6 Kxd6 39. Kc3 c5 40. a3 a5 41. cxb5 Bxb5 42. Ne5 Kd5 43. Nd3** Both players were under time pressure and agree to a draw. **1/2-1/2**

Tim Steiner (2055) - Dan Holmes (1678) Round 2

1. d4 Nf6 2. c4 g6 3. Nc3 Bg7 4. e4 d6 5. f4 O-O The opening is a King's Indian Defense: 4 pawn attack variation. Black gives up center control in order to play the hypermodern theorem **6. Nf3 e5?** This loses a pawn outright. A better move is c5, attacking d4, in hopes of trading a side pawn for a center pawn. The scope of the bishop on g7 secretly x-ray attacks d4 as well. White continues

development with ease of a pawn majority. **7. dxe5 dxe5 8. Qxd8 Rxd8 9. Nxe5 Nbd7 10. Nxd7 Bxd7 11. Be2 c6 12. O-O Ng4** Black attempts to double up White's pawn on the c-file **13. e5 Nh6 14. Be3 Bg4 15. Rfd1 Bxe2 16. Nxe2 Nf5 17. Bf2 h5 18. Nc3 b6 19. Ne4 Kf8 20. a4** White starts a series of move to open up the queenside. Grandmaster usually play this with two goals in mind: fixate pawns (usually a4 is immediately replied with a5, however that is not possible as the bishop on f2 eyes on b6) & perhaps ideas of rook lifts across the 3rd rank. **20...Ke7 21. a5 bxa5 22. Bc5+ Ke8 23. Rxd8+ Rxd8 24. Rxa5 Nd4??** Loses a piece with **25. Nd6+** with possible mate and material exchange ahead. Black resigns. **1-0**

Mehta Karan (1470) – Tim Steiner (2055) Round 3

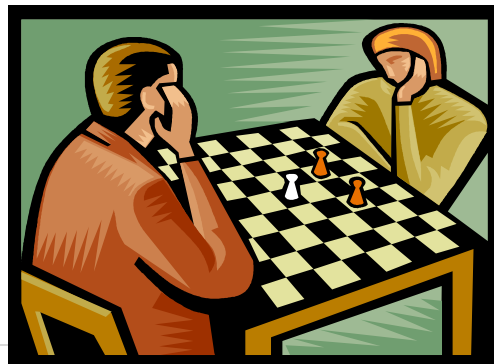
1. e4 c6 2. d4 d5 3. exd5 cxd5 4. c4 Nf6 Black transposed a queen pawn game into a Caro-Kann. 5. Nf3 Nc6 6. Nc3 Be6 7. b3 g6 8. Bb2 Bg7 9. Be2 O-O 10.O-O Rc8 11. Re1 dxc4 12. bxc4 Na5 White is stuck with isolated pawns on the c & d files which are prone to attack by black by putting rooks on those respective files. 13. c5 b6 14. Ba6 Rb8 15.Bb5?! The much needed move is Qe2. This protects the bishop on b2 and thwarts any plans of skewering White's bishops. Another approach is Ba3, protecting c5 square. 15...bxc5 16. Qd2 Bc4 17. Ba4 cxd4 18. Ne4?? 18.Nd1 would be best as it protects the bishop on b2. Right now, white has too many pieces under attack and putting another one is not wise. 18...Nxe4 19. Rxe4 f5 20. Ree1 Bd5 21.Nxd4 Nc4 A rather difficult position to defend against as a young scholastic player. Qc1 would slow the lost game.

Steiner finishes the game with his double bishop domination and technique. 22. Qd1 Nxb2 23. Qc2 Bxd4 24. Bb3 e5 25. Rac1 Rxb3 26. axb3 Qg5 27. g3 f4 28. h4 Qxg3+ 29. Kf1 Qg2+ 30. Ke2 Qxf2# 0-1

Tim Steiner (2055) – Taimoor Noor (1891) Round 4

1. d4 Nf6 2. c4 g6 3. Nc3 Bg7 4. e4 d6 5. f4 O-O The opening is a King's Indian Defense: 4 pawn attack variation. Black gives up center control in order to play the hypermodern theorem, hoping white overextends his central pawns and create holes. 6. Nf3 Nbd7 7. e5 Ne8?! Black usually navigates his knight g4-h6-f5. 8. Be3 e6? This blocks in the light square bishop and makes the d6 pawn weak if White so-chooses to open up the d-file. A better move would be playing c5, playing true the hypermodern. After 8...c5

9.dxc5 dxe5 10.fxe5 Nc7 with plans of either winning the c5 or e5 pawn. Qc7 is also playable, putting 3 attackers on the e5 and immediately pressure also on c5 9. Qd2 Nb6 10. O-O-O d5 11. c5 Nd7 Black light-square bishop is doomed. White majority in space gives White almost a 3-pawn advantage. With completion of development, White has all his pieces aiming towards the king side 12. Bd3 b6 13. h4 bxc5 14. dxc5 c6 15. h5 the attack begins on the h-file! 15...Nc7 16. g4 Re8 17. Qh2 Nf8 18. hxg6 hxg6 19. Rdg1 f6 20. Rg3 Qe7 21. Rh3 Kf7 22. Bd4 Rd8 23. exf6 Bxf6 24. Bxg6+! A sacrifice that opens the King completely to White's battery. 24...Kxg6 24...Nxg6 loses with 25.Rh7+ Kd8 26.Qh5! 25. Rh6+ Kg7 26. Rxf6 with mate on Qh8. 26...Qxf6 is refuted by 27.Qh8+ Kf7 28.Bxf6 Ke8 29. Qh5+ Ng6 30. Qxg6+ Kf8 31. Rh8# 1-0



Brian Yang's Graduation Crosstables

Brian Yang's Graduation Crosstables

Open Section

Num	USCF ID / Rtg (Pre->Post)	Pts	1	2	3	4	5	
<u>1</u>	<u>TIM C STEINER</u>	4.5	D	3 W	4 W	14 W	2 W	6
KS	12520946 / R: 2055 ->2062 Q: 1841 ->1870							
<u>2</u>	<u>TAIMOOR NOOR</u>	3.5	W	6 W	11 W	10 L	1 D	3
KS	12627423 / R: 1891 ->1907 Q: 1774 ->1805							
<u>3</u>	<u>ANDREW LATHAM</u>	3.5	D	1 W	9 W	13 D	8 D	2
KS	12842311 / R: 1866 ->1900 Q: 1740 ->1782							
<u>4</u>	<u>DAN HOLMES</u>	3.5	W	15 L	1 D	7 W	14 W	8
KS	13221068 / R: 1678 ->1746 Q: 1591 ->1645							
<u>5</u>	<u>TONY R CHENG</u>	3.0	L	10 L	8 B	0 W	11 W	12
KS	13486296 / R: 1829 ->1828 Q: 1848 ->1838							
<u>6</u>	<u>SAM N UN</u>	3.0	L	2 B	0 W	12 W	10 L	1
KS	12571317 / R: 1718 ->1757 Q: 1707 ->1724							
<u>7</u>	<u>CURTIS HARTMAN</u>	3.0	H	0 L	14 D	4 W	15 W	10
KS	12805542 / R: 1717 ->1729 Q: 1685 ->1680							
<u>8</u>	<u>STEVEN J RAND</u>	2.5	L	12 W	5 W	11 D	3 L	4
MO	13666146 / R: 1847 ->1844 Q: 1781 ->1779							
<u>9</u>	<u>LAURENCE COKER</u>	2.5	H	0 L	3 W	15 U	0 W	13
KS	12174160 / R: 1690 ->1741 Q: 1407 ->1494							
<u>10</u>	<u>ALEX VINCENT ESPOSITO</u>	2.0	W	5 W	12 L	2 L	6 L	7
MO	12895924 / R: 1807 ->1799 Q: 1739 ->1733							
<u>11</u>	<u>THOMAS GAUL</u>	2.0	W	13 L	2 L	8 L	5 W	14
IA	12475158 / R: 1754 ->1749 Q: 1761 ->1746							
<u>12</u>	<u>FRANK H SMITH</u>	1.5	W	8 L	10 L	6 D	13 L	5
MO	12834366 / R: 1950 ->1916 Q: 1863 ->1830							
<u>13</u>	<u>DAVID BLAIR</u>	1.5	L	11 W	15 L	3 D	12 L	9
KS	12479750 / R: 1931 ->1898 Q: 1875 ->1830							
<u>14</u>	<u>KARAN A MEHTA</u>	1.5	H	0 W	7 L	1 L	4 L	11
KS	13867674 / R: 1470 ->1489 Q: 1328 ->1363							
<u>15</u>	<u>RANDY WAYNE GIMINEZ</u>	0.5	L	4 L	13 L	9 L	7 H	0
MO	11041019 / R: 1820 ->1800 Q: 1459 ->1424							

RESERVE SECTION U1600

Pair Num	Player Name USCF ID / Rtg (Pre->Post)	Total Pts	Round 1	Round 2	Round 3	Round 4	Round 5
<u>1</u> KS	<u>JIMMY J HUGGINS</u> 12969222 / R: 1385 ->1398 Q: 1278P23->1313	4.0	L	2 W	9 W	14 W	4 W 3
<u>2</u> KS	<u>WILLIAM LIU</u> 14295205 / R: 848P11->1121P16 Q: 811P11->1081P16	4.0	W	1 L	3 W	13 W	11 W 5
<u>3</u> MO	<u>C J ARMENTA</u> 12650738 / R: 1542 ->1518 Q: 1470 ->1448	3.5	W	12 W	2 D	4 W	5 L 1
<u>4</u> KS	<u>ZACHARY LANDON SCHUH</u> 13760474 / R: 1284 ->1319 Q: 1261 ->1291	3.5	W	14 W	15 D	3 L	1 W 7
<u>5</u> KS	<u>BRYCE A ROGERS</u> 14160567 / R: 1093P19->1109P24 Q: 1093P10->1104P15	3.0	W	13 W	6 W	8 L	3 L 2
<u>6</u> KS	<u>GARRETT J MCMINDES</u> 14379025 / R: 743P5 -> 914P10 Q: 670P5 -> 847P10	3.0	W	10 L	5 L	11 W	13 W 12
<u>7</u> KS	<u>BRIAN MCGUIRE</u> 14373307 / R: 1469P8 ->1350P12 Q: 1469P8 ->1335P12	2.5	H	0 L	8 W	15 W	10 L 4
<u>8</u> KS	<u>HAYDEN MATHW KAUSTINEN</u> 14092257 / R: 991P15->1041P19 Q: 1041P10->1069P14	2.5	H	0 W	7 L	5 L	12 W 11
<u>9</u> KS	<u>ANAND MEHTA</u> 14243101 / R: 858P21-> 867P24 Q: 477P9 -> 576P12	2.5	H	0 L	1 L	10 B	0 W 14
<u>10</u> KS	<u>SCOTT ERIC MERRYMAN</u> 12488758 / R: 1190 ->1110 Q: 981 -> 907	2.0	L	6 L	13 W	9 L	7 B 0
<u>11</u> KS	<u>VIVEK VELAGAPUDI</u> 13580665 / R: 1119 ->1064 Q: 1089 ->1037	2.0	L	15 W	12 W	6 L	2 L 8
<u>12</u> KS	<u>ANDREW LIU</u> 14295191 / R: 1078P12->1035P16 Q: 1095P12->1044P16	2.0	L	3 L	11 B	0 W	8 L 6
<u>13</u> KS	<u>DAVID KHALIF</u> 14452623 / R: Unrated-> 862P4 Q: Unrated-> 782P4	2.0	L	5 W	10 L	2 L	6 X 0
<u>14</u> KS	<u>SIDDARTH MUKUT SHARMA</u> 13291882 / R: 842P7 -> 797P11 Q: 984P19-> 913P23	1.5	L	4 B	0 L	1 D	15 L 9
<u>15</u> KS	<u>ADAM P ALBRIGHT</u> 14243081 / R: 682P9 -> 791P13 Q: 619P9 -> 756P13	1.5	W	11 L	4 L	7 D	14 F 0

2010 Kansas Open

2010 Kansas Open

By: Brian Yang

The Kansas Open 2010 was held on June 16, 2010 – June 18, 2010 in Lindsborg, Kansas. The Kansas Quick and Bughouse tournament were held at the Karpov International School of Chess while the main event was held at Bethany College Library. All three events drew 94 players. The Bughouse time controls were Game 5 Round Robin. The Quick time controls were five rounds of Game 10 Swiss. The Main event was five rounds of Game 120 spread across two days.

The big winner of the Kansas Open 2010 was Maxx Coleman. He won every event possible: Open Section, Quick Event, and Bughouse with partner Tom Brownscombe. With an undefeated score of 4.0/5.0 (3 wins, 2 draws), he secured the title as Kansas 2010 State Champion. His USCF rating increased from 2181 to 2187. Brian Yang is the 2010 Kansas Reserve Champion with the undefeated score of 4.5/5.0 (4 wins, 1 draw). His USCF rating increased from 1566 to 1652. Edward Wilson was the top scholastic player of the reserve section; he received a plaque for his 3.0/5.0 result. Overall the tournament was a success, despite the summer heat that shined the three walls of the tournament hall.

During the tournament, the Kansas Chess Association had their annual meeting. Members present at the meeting elected Tom Brownscombe as KCA President, Brian Yang as Vice-President, Laurence Coker as Treasurer/Webmaster, Duane Johnson as secretary, and Brian Yang & Kyle Camarda as co-editors of Plains Chess. Brownscombe was voted to be our Kansas delegate to the 2010 USCF delegates meeting held in Irvine, California.



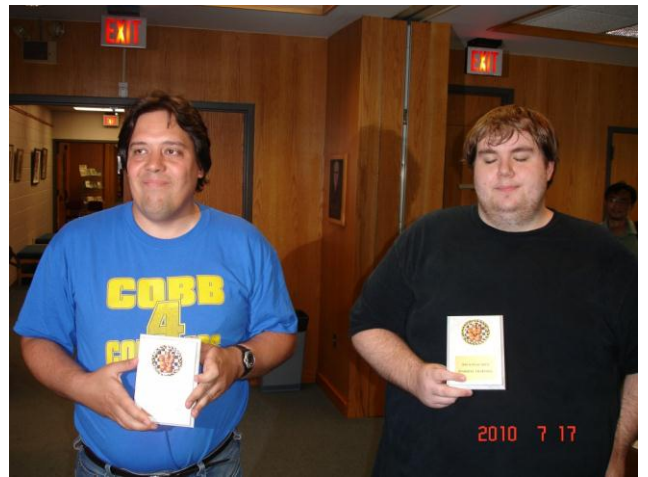
Maxx Coleman – 2010 Kansas State Champion



Brian Yang – 2010 Kansas Reserve Champion



Maxx Coleman – 2010 Kansas Quick Champion



Tom Brownscombe and Maxx Coleman – 2010 Kansas Bughouse Champions



Edward Wilson – 1st place Scholastic in Reserve



Rachel Hasch – 1st Place Scholastic in Quick



2010 Kansas Open Crosstables

2010 Kansas Open Crosstables

2010 KANSAS OPEN, July 17-18,2010, Open Section
 Maxx Coleman winner and new 2010 Kansas State Champion

Pair Num	Player Name USCF ID / Rtg (Pre->Post)	Total Pts	Round 1	Round 2	Round 3	Round 4	Round 5
1 KS	MAXX W COLEMAN 12751215 / R: 2181 ->2187	4.0 N:C	D 12	W 11	W 9	D 8	2
2 KS	TOM BROWNSCOMBE 12403209 / R: 2200 ->2200	3.5 N:1	W 18	D 9	W 6	D 3	1
3 MO	BENJAMIN M GRADSKY 12717265 / R: 1990 ->2012	3.5 N:1	W 13	W 4	D 8	D 2	5
4 KS	ANDREW LATHAM 12842311 / R: 1900 ->1938	3.5 N:1	W 7	L 3	W 13	D 6	10
5 KS	CHRISTOPHER PURDY 13523507 / R: 1909 ->1929	3.5 N:1	W 20	L 8	W 19	W 10	3
6 CO	DAVID MELITI 12600651 / R: 1966 ->1972	3.0 N:1	W 19	D 10	L 2	D 4	12
7 MO	FRANK H SMITH 12834366 / R: 1969 ->1963	3.0 N:2	L 4	L 14	W 17	W 19	16
8 KS	TIM C STEINER 12520946 / R: 2062 ->2065	2.5 N:1	W 16	W 5	D 3	L 1	0
9 CO	JOSHUA JEX 12470164 / R: 1922 ->1942	2.5 N:1	W 17	D 2	L 1	W 14	0
10 CO	M PAUL COVINGTON 12044640 / R: 1915 ->1918	2.5 N:2	W 14	D 6	W 15	L 5	4
11 MO	TONY DUTIEL 12602486 / R: 1874 ->1883	2.5 N:2	D 15	L 1	L 16	W 13	17
12 KS	TERRY L WRIGHT 12345700 / R: 1876 ->1878	2.0 N:2	D 1	L 15	D 14	W 16	L 6
13 KS	JAIME E FERNANDEZ 12663316 / R: 1872 ->1859	2.0 N:2	L 3	W 20	L 4	L 11	W 19
14 MO	RANDY WAYNE GIMINEZ 11041019 / R: 1802 ->1806	2.0 N:2	L 10	W 7	D 12	L 9	H 0
15 KS	JASON WAWRZASZEK 12685755 / R: 2014 ->2005	1.5 N:3	D 11	W 12	L 10	U 0	U 0
16 KS	TAIMOOR NOOR 12627423 / R: 1907 ->1888	1.5 N:3	L 8	D 17	W 11	L 12	L 7
17 OK	JUDSON TEMPLE 10330912 / R: 1808 ->1800	1.5 N:3	L 9	D 16	L 7	W 20	L 11
18 AR	JARED S TAYLOR 12832278 / R: 1937 ->1922	1.0 N:3	L 2	L 19	W 20	U 0	U 0

19		TONY R CHENG		1.0		L	6 W	18 L	5 L	7 L	13
KS		13486296 / R: 1820		->1803							

20		JOSEPH CHENG-YUE WAN		1.0		L	5 L	13 L	18 L	17 B	0
NE		14023940 / R: 1629		->1606							

2010 KANSAS OPEN, July 17th-18th, Reserve Section
Brian Yang by tiebreaks is the new Kansas Reserve Champion

1		VLADIMIR SHIMON IGLESIAS		4.5		W	15 D	20 W	7 W	9 W	8
KS		12628521 / R: 1730		->1743		N:3					

2		BRIAN Y YANG		4.5		W	27 W	12 W	3 W	11 D	5
KS		12946778 / R: 1566		->1652		N:2					

3		JOHN GREGORY PRITCHARD		4.0		W	16 W	6 L	2 W	23 W	11
KS		13523493 / R: 1721		->1724		N:3					

4		LAURENCE COKER		4.0		W	17 W	19 L	8 W	13 W	12
KS		12174160 / R: 1693		->1687		N:4					

5		GEORGE R VERHAGE JR		4.0		W	34 W	13 W	23 D	8 D	2
KS		10368731 / R: 1609		->1620		N:3					

6		PAUL J THURBON		4.0		W	29 L	3 W	14 W	15 W	10
KS		12933475 / R: 1393P20->1475P25				N:3					

7		TYSON JOSEPH HINRICHS		3.5		W	21 D	9 L	1 W	19 W	20
KS		14458398 / R: Unrated->1622P5				N:3					

8		ALEX J PENNINGTON		3.5		W	36 W	14 W	4 D	5 L	1
OK		12786209 / R: 1548		->1578		N:3					

9		KARAN A MEHTA		3.5		W	28 D	7 W	20 L	1 W	21
KS		13867674 / R: 1489		->1516		N:4					

10		TOM L PHILLIPS		3.0		L	14 W	36 W	16 W	24 L	6
KS		12411318 / R: 1700		->1700							

11		COLBY L STUCKMAN		3.0		W	25 W	24 W	22 L	2 L	3
KS		12816559 / R: 1634		->1630		N:4					

12		ANDREW GUY RITTER		3.0		W	26 L	2 W	28 W	22 L	4
KS		13754658 / R: 1379		->1412							

13		DUANE D JOHNSON		3.0		W	38 L	5 W	30 L	4 W	28
KS		12338320 / R: 1320		->1315							

14		LYLE TAYLOR		3.0		W	10 L	8 L	6 W	38 W	23
KS		12959210 / R: 1172		->1278		N:4					

15		EDWARD LENNON WILSON		3.0		L	1 W	35 W	40 L	6 W	27
KS		13221472 / R: 1278		->1272							

16		JOHN E THOMSON		3.0		L	3 W	34 L	10 W	30 W	26
KS		12427070 / R: 1179		->1197							

17		LEROY E ASHER		3.0		L	4 D	29 D	25 W	33 W	24
KS		12537402 / R: 1103		->1135							

18		THOMAS A COOPER		2.5		W	33 L	23 H	0 L	21 W	32
KS		12357070 / R: 1615		->1569							

19		DARYL R FOUARD		2.5		W	30 L	4 H	0 L	7 W	33
KS		12401335 / R: 1369		->1360							

20	BRYAN LIU JIANG	2.5	W	35 D	1 L	9 W	32 L	7
KS	14097248 / R: 1353	->1358						
21	CHARLES M COVINGTON	2.5	L	7 W	37 D	32 W	18 L	9
OK	12393978 / R: 1342	->1344						
22	JOEL NATHANIEL STEBBINS	2.0	W	37 W	40 L	11 L	12 U	0
MO	13920508 / R: 1716	->1678						
23	ALEXANDER GOLUBOW	2.0	W	39 W	18 L	5 L	3 L	14
NE	12589046 / R: 1356	->1351						
24	ERIK J NICKELS	2.0	W	31 L	11 W	27 L	10 L	17
OK	13210650 / R: 1360	->1324						
25	MICHAEL L NICKELS	2.0	L	11 L	30 D	17 D	31 W	38
OK	13916654 / R: 1051	->1005						
26	ERIC SERAFIN	2.0	L	12 L	27 W	35 W	34 L	16
KS	14462608 / R: Unrated->	953P5						
27	JOSH S HOLE	2.0	L	2 W	26 L	24 W	40 L	15
KS	12969216 / R: 898	-> 925						
28	CONNOR RYAN THOMSON	2.0	L	9 W	38 L	12 W	39 L	13
KS	14079530 / R: 904	-> 906						
29	RACHEL N HASCH	2.0	L	6 D	17 L	34 D	35 W	39
KS	12972136 / R: 781	-> 790						
30	HENRY J ELLIOTT	2.0	L	19 W	25 L	13 L	16 W	37
KS	14231808 / R: 615P24->	764						
31	MAVERICK LEE LANDES LEWIS	2.0	L	24 L	32 W	36 D	25 D	34
KS	14067673 / R: 561	-> 721						
32	CHRISTOPHER J ANTON	1.5	U	0 W	31 D	21 L	20 L	18
KS	12944216 / R: 1052	->1066						
33	FRED A SMITH	1.5	L	18 W	39 H	0 L	17 L	19
MO	13100001 / R: 966	-> 949						
34	BRENDAN WILLIAM JESTER	1.5	L	5 L	16 W	29 L	26 D	31
KS	14163044 / R: 966P19->	930P24						
35	FLOYD E GEASLAND	1.5	L	20 L	15 L	26 D	29 W	40
KS	12784387 / R: 758	-> 748						
36	SIMON SERAFIN	1.0	L	8 L	10 L	31 L	37 B	0
KS	13997797 / R: 895P21->	820P25						
37	EMILY M HASCH	1.0	L	22 L	21 L	38 W	36 L	30
KS	12972121 / R: 785	-> 745						
38	SAMMY J HOLE	1.0	L	13 L	28 W	37 L	14 L	25
KS	14218140 / R: 396P3	-> 565P8						
39	ANTHONY SERAFIN	1.0	L	23 L	33 B	0 L	28 L	29
KS	13999155 / R: 487P21->	468P25						
40	ANNE SERAFIN	1.0	B	0 L	22 L	15 L	27 L	35
KS	13999134 / R: 374P21->	364P25						

2010 KANSAS OPEN, July 16th, 2010-Quick Chess Tourney
Maxx Coleman is 2010 Kansas Quick Chess Champion

<u>1</u>		MAXX W COLEMAN		5.0		W	10 W	6 W	12 W	7 W	5
KS		12751215 / Q: 2103		->2120							
<u>2</u>		TONY R CHENG		4.0		W	15 L	10 W	16 W	12 W	7
KS		13486296 / Q: 1828		->1840							
<u>3</u>		BRIAN Y YANG		3.5		W	14 L	7 D	4 W	8 W	9
KS		12946778 / Q: 1904		->1902							
<u>4</u>		ANDREW LATHAM		3.5		W	11 D	8 D	3 D	9 W	12
KS		12842311 / Q: 1782		->1817							
<u>5</u>		FRANK H SMITH		3.0		W	16 L	12 W	14 W	10 L	1
MO		12834366 / Q: 1877		->1874							
<u>6</u>		TERRY L WRIGHT		3.0		W	18 L	1 L	9 W	13 W	14
KS		12345700 / Q: 1785		->1774							
<u>7</u>		TONY DUTIEL		3.0		X	0 W	3 W	8 L	1 L	2
MO		12602486 / Q: 1737		->1773							
<u>8</u>		JASON WAWRZASZEK		2.5		W	13 D	4 L	7 L	3 W	17
KS		12685755 / Q: 1903		->1879							
<u>9</u>		BENJAMIN M GRADSKY		2.5		L	12 W	11 W	6 D	4 L	3
MO		12717265 / Q: 1659		->1684							
<u>10</u>		TOM L PHILLIPS		2.5		L	1 W	2 W	13 L	5 D	11
KS		12411318 / Q: 1656		->1666							
<u>11</u>		ANDREW GUY RITTER		2.5		L	4 L	9 W	17 W	18 D	10
KS		13754658 / Q: 1283		->1316							
<u>12</u>		TOM BROWNSCOMBE		2.0		W	9 W	5 L	1 L	2 L	4
KS		12403209 / Q: 2089		->2061							
<u>13</u>		LAURENCE COKER		2.0		L	8 W	15 L	10 L	6 W	18
KS		12174160 / Q: 1494		->1481							
<u>14</u>		ALEXANDER GOLUBOW		2.0		L	3 W	18 L	5 W	16 L	6
NE		12589046 / Q: 1418		->1428							
<u>15</u>		RACHEL N HASCH		1.5		L	2 L	13 D	18 L	17 B	0
KS		12972136 / Q: 741		-> 724							
<u>16</u>		JOEL NATHANIEL STEBBINS		1.0		L	5 W	17 L	2 L	14 U	0
MO		13920508 / Q: 1309		->1293							
<u>17</u>		MAVERICK LEE LANDES LEWIS		1.0		U	0 L	16 L	11 W	15 L	8
KS		14067673 / Q: 500		-> 581							
<u>18</u>		BRYAN LIU JIANG		0.5		L	6 L	14 D	15 L	11 L	13
KS		14097248 / Q: 1213		->1164							

2010 BUGHOUSE CHAMPIONSHIP, July 16th, 2010

2010 Bughouse Championship -July 16th, 2010
 Brownscombe-Coleman Kansas Bughouse champions

NAME OF TEAM	1	Opponents							Score
	2	3	4	5	6	7	8		
1. Brownscombe-Coleman x	W	W	W	W	W	W	W	7.0	
2. Duteil-Gradskey	L	x	W	W	W	W	W	6.0	
3. Latham-Yang	L	L	x	W	W	W	W	5.0	
4. Lewis-Purdy	L	L	L	x	W	W	W	4.0	
5. Hasch-Anton	L	L	L	L	x	L	W	2.0	
6. Coker-Ritter	L	L	L	L	W	x	W	3.0	
7. Leon-Hasch	L	L	L	L	L	L	x	0.0	
8. Stiles-Daniels	L	L	L	L	L	L	W	1.0	

KCA 2010 ANNUAL MEETING MINUTES

Date-July 18, 2010 at 8 am

Place-Lindquist Hall basement, Bethany College Lindsborg, KS.

Duane Johnson and Laurence Coker co-writers

Copies of last year's KCA minutes (2009), this year's agenda, reports of annual expenses, 2009 Renfest report, and a revised proposal for joint KSCA-KCA tournaments were handed out to the 10 KCA members present. A sign-in sheet was distributed for our members to acknowledge their attendance.

1. Tom Brownscombe, our President, called the 2010 Annual meeting to order.
2. The minutes of last year were reviewed, and approved.
3. Laurence Coker discussed finances—2 pages of the financial report were handed out. In summary: (Page 1) The Renaissance Festival again ran seven weekends last year and again was organized by Laurence Coker. After expenses the RenFest booth netted \$857.24. (Page 2) Expenses for year were \$1207.47 with income of \$1834.07. Major expenses were \$100 each to Denker representative, Polgar representative, and delegate to US Open annual meetings. \$600 was paid out for KCA sponsorship of tournaments. Big income items: The money from the RenFest (\$857.24), \$331 from KCA memberships from Kansas Open, and \$393 for KCA memberships outside Kansas Open. We netted \$151.83 from last year's Kansas Open. For the year we netted \$626.60. The checkbook balance on 7/08/2010 was \$3396.27.
4. Laurence gave a detailed report on the Renaissance Festival project. Ron Pasik has moved to Washington or Oregon, and no one has stepped forward to fill his 2 weekends of the Renaissance Festival. C.J. Armenta will type up a volunteer schedule for the 7 weeks of the Festival, so members can sign up, and if there is insufficient support from our KCA members, we might either ask for weekend support for some weekends by the Westport, Mo. Chess Club or possibly even give up complete control of this moneymaking project to the Westport, Mo. Chess Club for 1 year.
5. A discussion ensued about changing the time limits of the KSCA games, for consistency. Two motions to change the time to 29 minutes, with or without a time delay, failed to pass for a lack of a Second on the motion. So, the time limit of the games will be left up to the tournament director's discretion.
6. Discussion of 2010 Kansas Open.-- C.J. Armenta reported that we had 8 teams of Bughouse players, and 18 players in the Quick chess tournaments on Friday evening (7/16/10), and that we had 20 entries in the Open section, 40 entries in the Reserve Section, (27 adults, and 13 scholastic), for a total of 60 entries, 2 more than we had last year.

7. Discussion of 2011 Kansas Open--C.J. Armenta suggested that we may possibly increase attendance if we move the tournament site to the Kansas City Area. A motion was made, and approved to have C.J. approach the KSCA board and negotiate free entries for their scholastic members, in exchange for a reasonable donation towards the cost of a Kansas City site location.

8. 2011-2012 budget. Laurence said if we do not support the Renaissance Festival project, then we will have to raise the annual dues. It was decided to not increase the dues at this time. It was discussed and approved, to increase the annual membership fee by \$3.00 starting with the 2011 Kansas Open if anyone wanted to receive the quarterly chess bulletins mailed to them by U.S. Mail service.

9. Election of Officers for the 2011-2012 year, were voted in by the members: Tom Brownscombe will continue to reign as our President, Brian Yang will be our Vice-President, Laurence Coker will be our Treasurer and Secretary, Brian Yang and Kyle Camarda will be our co-editors for the Plains Chess.

10. Emily Hasch is our Kansas Polgar Representative, and we will support her with a \$100.00 contribution. Andrew Latham is our Denker Representative and he also will receive a \$100.00 contribution. Tom Brownscombe was approved to be our USCF Delegate at the USA OPEN in California, with Laurence Coker as our Alternate. A motion was made and approved to donate \$150.00 to our USCF Delegate to help out with his expenses.

11. A discussion ensued about the creation of a Kansas Chess Hall of Fame. Daryl Fouard suggested that Terry Wright was willing and able to take charge of this project. Since Terry was not present at the meeting, Daryl was given approval to contact him about heading up this project. There was brief discussion of copying old bulletins to eventually place scanned copies on the Kansas website. Terry Wright is to be in charge of this also.

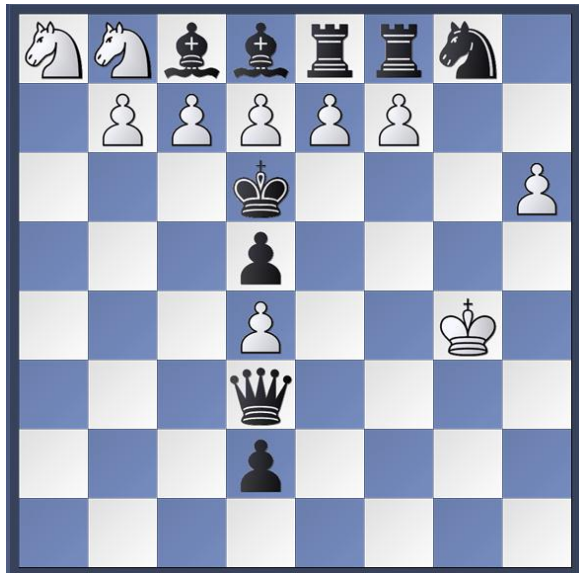
12. There being no more business for the membership to discuss and vote upon, the meeting was adjourned at 8:53 am

Those 10 members present at this meeting were:

1. George (Dick) Verhage 2. Tom Brownscombe 3. Tyson Hinnchs 4. Laurence Coker
5. Daryl Fouard 6. C.J. Armenta 7. Brian Yang 8. Lyle Taylor 9. Tony Dutiel 10.
Duane Johnson

Respectfully submitted,
Duane Johnson, Secretary

SOLUTION TO THE SPRING/SUMMER EDITION OF PLAINS CHESS' PUZZLE



Puzzle #1 1.bxc8N+ Ke6 2.cxd8N+ Kf6 3.dxe8N+ Kg6 4.exf8N+ Kxh6 5.fxg8N# 1-0
 Puzzle #2 1.Ne4! 1-0 10 times as the knight mates all 10 kings.

Fall/Winter Chess Edition Puzzle – Black to Move and Win

