

The entire page is framed by a black and white checkered border. The background is a light beige color with a subtle gradient.

# Kansas Chess Association

“...to broaden and develop chess as a  
significant cultural art in Kansas.”

## Plains Chess: Fall 2011 Edition

Editor: Kyle Camarda

Publishing Editor: Brian Yang

---

# Table of Contents

## Table of Contents

	PAGE
PRESIDENT'S QUARTERLY REMARKS .....	2
2011-2012 KCA OFFICERS .....	3
MEMBERSHIP.....	4
KANSAS STATE CHESS CHAMPIONS.....	5
TOP 25 KANSAS CHESS PLAYERS (SEPTEMBER) .....	6
RENAISSANCE FESTIVAL INFORMATION .....	7
FINANCIAL REPORT / LOST AND FOUND .....	9
2011 KANSAS OPEN .....	10
2011 KANSAS OPEN CROSSTABLES.....	12
MY KANSAS OPEN ADVENTURE.....	18
SOLUTION TO PUZZLE/NEW PUZZLE.....	25

# President's Quarterly Remarks

## President's Quarterly Remarks

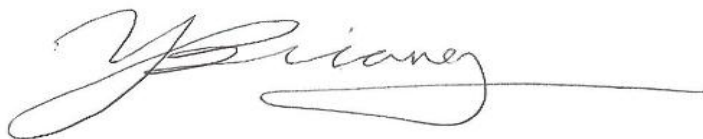
Hello Kansas Chess Players~!

Welcome to *Plains Chess: Fall 2011 Edition*. In this issue, we will focus on the Kansas Open 2011, which had 100 players in attendance. This tournament is the largest KCA event since 2005.

So what happened to "From the Editor?" Well this year at the Kansas Open, I was sworn in as KCA President, though I will still help our editor - Kyle Camarda - with formatting and publishing of *Plains Chess*. Thus, "From the Editor" has changed to the "President's Quarterly Remarks."

*Quarterly*. Yes, that means there will be FOUR *Plains Chess* a year. Kyle and I will be pushing for four and will be published August, November, February, and May. Special thanks also to Laurence Coker for printing and binding all the copies to be mailed. This will, however, require the membership to submit materials to us - whether it is an annotated game or a local article about a chess event. This year will be packed with more USCF tournaments, more activities, and more communication with our members through e-mail, the KCA website ([www.kansaschess.org](http://www.kansaschess.org)) and this publication. There is a lot of information to transmit, including the minutes of the KCA meeting at the Kansas Open 2011, information about the RenFest and an up-to-date budget report with the expenses and income carefully outlined.

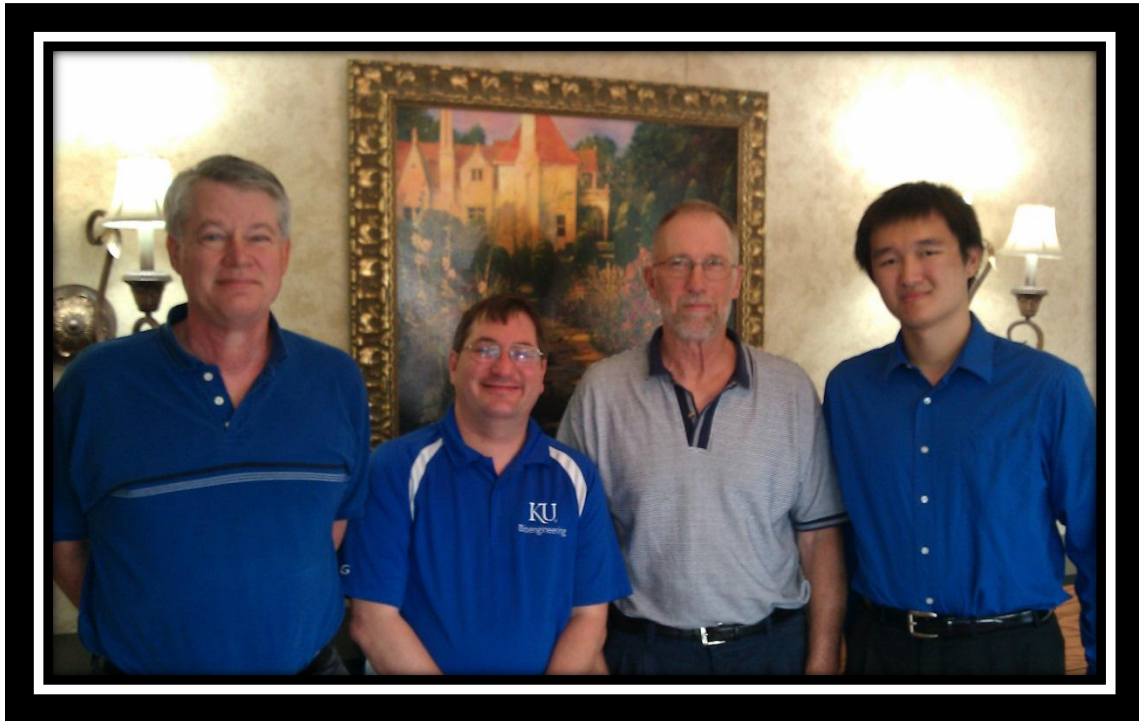
If you have any questions or comments, our "Officer's page" has been updated with contact information for the KCA new officers. Until then, I look forward to seeing you at a KCA chess event.



Brian Yang  
2011-2012 KCA President / Publishing Editor

# 2011-2012 KCA Officers

## 2011-2012 KCA Officers



Left to Right: Laurence Coker, Kyle Camarda, Duane Johnson, and Brian Yang

<p><b>Brian Yang - President</b></p> <p>8109 W. 130<sup>th</sup> Street Overland Park, KS 66213</p> <p>Email: <a href="mailto:camarda@ku.edu">camarda@ku.edu</a></p>	<p><b>Kyle Camarda - Vice-President and Editor of <i>Plains Chess</i></b></p> <p>1128 Parkside Circle Lawrence, KS 66049</p> <p>Email: <a href="mailto:camarda@ku.edu">camarda@ku.edu</a></p>
<p><b>Laurence Coker - Co-Secretary, Treasurer, and Webmaster</b></p> <p>8013 W. 145<sup>th</sup> Street Overland Park, KS 66223</p> <p>Email: <a href="mailto:wlcoker7@hotmail.com">wlcoker7@hotmail.com</a></p>	<p><b>Duane Johnson - Co-Secretary</b></p> <p>225 South Grant Colby, Kansas 67701</p> <p>Email: <a href="mailto:duanejohnson@hotmail.com">duanejohnson@hotmail.com</a></p>

# Membership Membership

A Kansas Chess Association (KCA) membership has many privileges including the following: the right to play in all KCA-sponsored tournaments, including State Championship titled events; web/mail copies of KCA's magazine "Plains Chess"; a vote in the Annual Meeting; and the right to publish chess materials in "Plains Chess".

Membership Options	Cost (1 year)
<b>Regular Adult</b> <i>Ages 18+; full privileges</i>	\$7.00
<b>Junior</b> <i>Under 18; full privileges</i>	\$5.00
<b>Family</b> <i>Includes 3 membership, must be living in the same residence</i>	\$10.00
<b>Patron</b> <i>Includes 2 year membership; full page available &amp; name in "Plains Chess"</i>	\$50.00
<b>Contributor</b> <i>Includes 2 year membership; name in "Plains Chess"</i>	\$25.00

If you would like to join the KCA, fill out a membership form available on our website ([www.kansaschess.org](http://www.kansaschess.org)) and mail it along with dues to the KCA treasurer:

Laurence Coker  
8013 W. 145<sup>th</sup> Street  
Overland Park KS 66223

## SPECIAL RECOGNITION TO OUR PATRONS AND CONTRIBUTORS

### PATRONS:

John Stang's Family – '04-'07

Thomas Glenn – '05-'08

Rick Hodges – '04-'09

Lyle Taylor – '07-'10

### CONTRIBUTORS:

Ron Chaika – '04-'09

George Verhage – '04-'05; '07-'11

Joe Ciccio – '04-'05

Mila Mokriak – '05-'06

Jonathan Goering – '07-'08

### SPECIAL DONATION:

Ron Chaika - \$200

Ron Pasik – '07-'08

Ben McGreggor – '07-'08

Irwin Fisk – '08-'09

Bradford Blake '08-'12

Laurence Coker '11-'12

# Kansas State Champions

- 2011- Conrad Holt
- 2010- Maxx Coleman
- 2009- Tom Brownscombe
- 2008- Christopher Purdy
- 2007- Tom Brownscombe
- 2006- Maxx Coleman
- 2005- Mila Mokriak
- 2004- Deepyaman Datta
- 2003- Andrew Cherepanov
- 2002- Kyle Camarda
- 2001- Robert Glick
- 2000- Tim Steiner
- 1999- Alan Piper
- 1998- Ryan Porter
- 1997- Alan Piper
- 1996- Jason Kasick
- 1995- Ryan Porter
- 1994- Fred Galvin
- 1991-'93 Alan Piper
- 1990- Charles Aldelman
- 1989- Alan Piper
- 1982-'88- Michael Weirzbicki
- 1981- Bradford Blake, Michael Weirzbicki
- 1980- Wesley Koehler, Bruce Worner
- 1979- David Marshall, Don Oswald  
Dan Prichard, Thomas Raikes
- 1978- Jack McClurg
- 1977- Wesley Koehler
- 1976- Carl Sloan
- 1972-'75 -Dan Prichard
- 1971- Don McCrary
- 1970- Gary Watts



Tom Brownscombe – 2007 & 2009



Tim Steiner - 2000



Maxx Coleman – 2006 & 2010



Kyle Camarda - 2002

- 1967-'69- Randy Mills
- 1965- Virgil Harris
- 1964- Fred Bristol
- 1963- Robert Hart
- 1962- Gayle Hershey
- 1959-'60- George Krauss, Jr.
- 1958- Bert Brice Nash
- 1957- Wesley Perkins
- 1956- Carl Weberg
- 1955- Bert Brice Nash
- 1954- Carl Weberg
- 1953- Bert Brice Nash
- 1952- Jim Callis
- 1951- Henry Georgi
- 1950- Kirke Mechem
- 1949- Bert Brice Nash
- 1948- Arthur R. Self
- 1947- Jasper M. Stull
- 1907- Henry Woodson Rhea

If anyone has information on Kansas Chess Champions for the missing years, contact Laurence Coker at [wlcoker@hotmail.com](mailto:wlcoker@hotmail.com)

# Top 25 Kansas Chess Players

## Top 25 Kansas Chess Players



Rank	Name	Published Rating (September)
1	IM CONRAD HOLT	2536
2	MAXX W COLEMAN	2247
3	FM TOM BROWNSCOMBE	2212
4	STEVE TRAVIS	2154
5	TIM C STEINER	2124
6	ANDREW LATHAM	2072
7	CHRIS WILBEN CLAASSEN	2037
8	JOHN M CROOKS	1995
9	JASON WAWRZASZEK	1981
10	ROBERT D GLICK	1965
11	JOSE GATICA	1958
12	DAVID BLAIR	1946
13	KYLE CAMARDA	1904
14	BRIAN Y YANG	1902
15	TONY CHENG	1899
16	JAIME E FERNANDEZ	1892
17	ERIC DANIEL SHOEMAKER	1889
18	RICK HODGES	1870
19	TAIMOOR NOOR	1843
20	JOHN SCHULLER	1826
21	DAN B HOLMES	1821
22	TERRY L WRIGHT	1817
23	SALVADOR MARTINEZ JR	1786
24	SAM N UN	1780
25	"CHIDAMBARANATHAN"	1773

# 2011 Kansas City Renaissance Festival

## 2011 Kansas City Renaissance Festival

by Rick Hodges



The New Chess Sets

The 2011 Kansas City Renaissance Festival season runs weekends, 10 A.M. to 7 P.M., September 3 through October 16, including Labor Day and Columbus Day Mondays. This year's theme is, "Robin Hood" which coincidentally was the theme in 1995 when the Kansas Chess Association built the booth and began staffing it with volunteers.

After meeting with the RenFest administration, we have made significant progress toward our booth achieving even more revenue – more about that, later - for our organization, to promote chess and cover our expenses. Some

of those expenses are for upkeep of the booth and there have been several notable improvements made in time for this year's RenFest. Those of you who have been to our booth will be pleased to know that permanent benches are being built, and attached to the booth which ensures consistent seating for our players. New signage, (heavy four-foot shields with a 'checky' background (consistent with the Renaissance period) have been created that display our booth name and prices in larger wooden lettering, also consistent with Renaissance period script. The shields match the three colors of our booth, as do the new boards and sets (4.25" kings) we have purchased. Also, the area around the booth will be reworked so as to minimize the ongoing erosion that is inevitable on our hill. People trample the grass that holds the soil and about all that can be done is lay gravel down. The RenFest promptly responded to our request to do so.

As for the increased revenue, we are taking steps to maximize our net revenue from this venture. Firstly, our new prices have been set at one game for \$3 and two games for \$5. Secondly, we have been granted permission to sell chess equipment, and KCA memberships at the RenFest. The Policy Board is currently considering our initial investment into this new sideline. The equipment sales will never generate large profits, but will be consistent with the KCA's mission to introduce chess to those interested and maintain that interest. That having been said, we expect to make money on the investment over time, including making our equipment available to clubs and organizations throughout Kansas at a better price than they can find it elsewhere.

Even further, the owner of the Kansas City Renaissance Festival, Jim Peterson, would like the KCA to operate a large chess game booth in another area of the grounds. We would keep all but 10% of the profit from that, and be able to sell equipment there. Unfortunately, with time running so short, this second operation may not be up and running until the 2012 season.



Finally, Please note that our chess booth - Knight Moves- will require reconstruction of its roof and playing surfaces prior to the 2012 RenFest season. This year's profits should cover those expenses. More importantly, this will ensure that we will have a money-making opportunity at the Renaissance Festival for many years into the future.

If you have read this far, you appreciate the need for volunteers to staff the Knight Moves booth. Please contact me for dates you may be available to help the KCA.

My Caissa is your Caissa,

Rick Hodges  
KCA Policy Board Member & RenFest coordinator

**Contact info:**  
KCA RenFest  
710 N Sycamore St  
Peabody , KS 66866 -1367

[Rick.Hodges@pixius.net](mailto:Rick.Hodges@pixius.net)  
214-437-7965



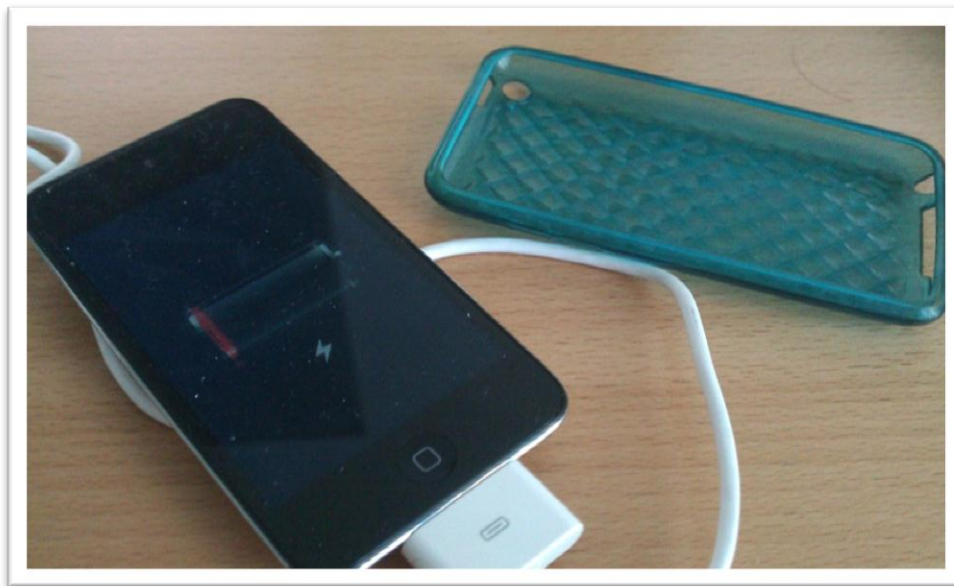
Shield Sign with "checky" background

# Financial Report / Lost And Found

Brian Yang

Many members at the KCA annual meeting expressed concerns about the KCA's finances, including the cost to hold the Kansas Open 2011 at Overland Park, and our support for the Kansas Scholastic Representatives. First of all, it should be noted that the KCA made \$27.87 at the tournament. I hope this eases the membership's concern about moving the tournament from Lindsborg to Overland Park. We are considering moving the tournament around the state in future years with the next tournament being in Wichita.

Also during the Kansas Open, an Ipad Touch was left inside the chess tournament area. It has a turquoise blue case. If you are missing this Ipad, simply e-mail me at [yang.brian@ymail.com](mailto:yang.brian@ymail.com) . As of right now, it is getting a free charge.



# Kansas Open 2011

Brian Yang

The Kansas Open 2011 was held on July 29<sup>th</sup> - July 31<sup>st</sup>, 2011 in Overland Park, KS at the Ramada Inn. The Kansas Quick and Bughouse tournaments were held on Friday night, while the standard tournament was held on the weekends. The Bughouse tournament drew 8 teams, while the Quick tournament drew 27 players, including IM Michael Brooks and IM Conrad Holt. The Open tournament drew over 100 players, a record high since 2005.

The winner of the tournament was IM Conrad Holt, with an undefeated score of 4.5/5.0. With 4 wins and a draw, he secured the title as Kansas 2011 State Champion. Sam Un is the 2011 Kansas Reserve Champion with the undefeated score of 5.0/5.0! His USCF rating increased from 1728 to 1780. Bryan Jiang is the top scholastic player and received a plaque for his awesome 4.0/5.0 score. The quick tournament was won by IM Conrad Holt with a score of 5.0/5.0. The bughouse was won by Tony Dutil and Benjamin Gradsky, ahead of the 2<sup>nd</sup> place team of IM Conrad Holt and FM Tom Brownscombe.

During the tournament, the Kansas Chess Association held our annual meeting. Members present at the meeting elected Brian Yang as KCA President, Kyle Camarda as Vice-President, Laurence Coker as Treasurer/Webmaster/co-secretary, Duane Johnson as co-secretary and Kyle Camarda & Brian Yang as editor and publishing editor, respectfully, of *Plains Chess*. Ralph Bowman was appointed to be the 2012 USCF delegate with David Blair as our alternate delegate. Rick Hodges was appointed as our RenFest coordinator. The 2011-2012 KCA policy board consists of Brian Yang, Kyle Camarda, Laurence Coker, Duane Johnson, CJ Armenta, Rick Hodges, and David Blair.



IM Conrad Holt - 2011 Kansas State Champion



**Sam Un - 2011 Kansas Reserve Champion**



**IM Conrad Holt - 2011 Kansas Quick Champion**



**Tony Dutiel & Ben Gradsky - 2011 Kansas Bughouse Champion**



**Bryan Jiang - 1st place Scholastic in Reserve**



**IM Michael Brooks - tied 2<sup>nd</sup> place in Open section**

# 2011 Kansas Open Crosstables

## 2011 Kansas Open Crosstables

2011 Kansas Open, July 30-31, 2011, Open Section  
 Conrad Holt is the new 2011 Kansas State Champion

Pair Num	Player Name USCF ID / Rtg (Pre->Post)	Total Pts	Round 1	Round 2	Round 3	Round 4	Round 5
1	<a href="#">CONRAD HOLT</a> KS   12937909 / R: 2539 -->2536	4.5	W 24	W 23	W 5	W 7	D 3
2	<a href="#">MICHAEL A BROOKS</a> MO   11045685 / R: 2440 -->2433	4.0	W 33	D 11	W 21	D 4	W 10
3	<a href="#">TOM BROWNSCOMBE</a> KS   12403209 / R: 2200 -->2212	4.0	D 13	W 14	W 11	W 6	D 1
4	<a href="#">MAXX W COLEMAN</a> KS   12751215 / R: 2245 -->2247	3.5	W 37	W 12	D 6	D 2	D 5
5	<a href="#">TIM C STEINER</a> KS   12520946 / R: 2108 -->2123	3.5	W 17	W 15	L 1	W 21	D 4
6	<a href="#">ANDREW LATHAM</a> KS   12842311 / R: 2047 -->2072	3.5	W 18	W 9	D 4	L 3	W 16
7	<a href="#">FRANK H SMITH</a> MO   12834366 / R: 2020 -->2042	3.5	W 34	W 28	W 10	L 1	D 8
8	<a href="#">JAMES S ELLIS</a> IA   10314372 / R: 2200 -->2200	3.0	L 30	W 34	D 13	W 17	D 7
9	<a href="#">ABHISHEK MALLELA</a> MO   12888811 / R: 2174 -->2157	3.0	W 26	L 6	L 25	W 32	W 21
10	<a href="#">NATHANIEL S FAST</a> MO   12828016 / R: 2112 -->2114	3.0	W 25	W 22	L 7	W 15	L 2
11	<a href="#">BENJAMIN M GRADSKY</a> MO   12717265 / R: 2047 -->2048	3.0	W 19	D 2	L 3	W 20	D 13
12	<a href="#">JOHN M CROOKS</a> KS   12398881 / R: 1998 -->1995	3.0	W 20	L 4	W 18	D 13	D 14
13	<a href="#">KYLE CAMARDA</a> KS   12399769 / R: 1836 -->1904	3.0	D 3	W 16	D 8	D 12	D 11
14	<a href="#">BRIAN Y YANG</a> KS   12946778 / R: 1848 -->1902	3.0	D 36	L 3	W 24	W 23	D 12
15	<a href="#">JAMES LARKIN SMITH</a> MO   13362808 / R: 1986 -->1970	2.5	W 31	L 5	W 28	L 10	D 19
16	<a href="#">JOSE M GATICA</a> KS   12444240 / R: 1952 -->1958	2.5	D 29	L 13	W 36	W 30	L 6
17	<a href="#">FRANK WHITSELL</a> MO   12811896 / R: 1848 -->1845	2.5	L 5	W 31	D 23	L 8	W 32
18	<a href="#">JOEL NATHANIEL STEBBINS</a> MO   13920508 / R: 1798 -->1795	2.5	L 6	W 38	L 12	D 28	W 30
19	<a href="#">CASEY HILL</a> TN   12633621 / R: 1585 -->1623	2.5	L 11	L 33	W 38	W 27	D 15
20	<a href="#">EDWARD LENNON WILSON</a> KS   13221472 / R: 1354 -->1505	2.5	L 12	W 37	W 33	L 11	D 23
21	<a href="#">STEVEN J RAND</a> MO   13666146 / R: 1997 -->1990	2.0	W 32	W 30	L 2	L 5	L 9
22	<a href="#">HAROLD GENE LINDE</a> KS   10406986 / R: 1985 -->1982	2.0	W 35	L 10	W 27	U 0	U 0
23	<a href="#">DAVID MELITT</a> MO   12600651 / R: 1945 -->1928	2.0	W 27	L 1	D 17	L 14	D 20



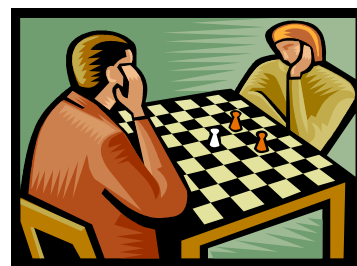
<a href="#">24</a>	<a href="#">RICK HODGES</a>	2.0	L	1 L	27 L	14 W	31 W	35	
KS	12491989 / R: 1893	->1870	N:4						
<a href="#">25</a>	<a href="#">ALEX VINCENT ESPOSITO</a>	2.0	L	10 W	35 W	9 U	0 U	0	
MO	12895924 / R: 1831	->1853							
<a href="#">26</a>	<a href="#">JUDSON TEMPLE</a>	2.0	L	9 L	32 D	31 W	35 D	28	
OK	10330912 / R: 1855	->1816							
<a href="#">27</a>	<a href="#">JOHN GREGORY PRITCHARD</a>	2.0	L	23 W	24 L	22 L	19 W	34	
KS	13523493 / R: 1724	->1729	N:3						
<a href="#">28</a>	<a href="#">COLBY L STUCKMAN</a>	2.0	W	38 L	7 L	15 D	18 D	26	
KS	12816559 / R: 1630	->1638							
<a href="#">29</a>	<a href="#">ANSAR LEMON</a>	1.5	D	16 W	36 U	0 U	0 U	0	
MO	14155305 / R: 1976	->1991							
<a href="#">30</a>	<a href="#">DAN B HOLMES</a>	1.5	W	8 L	21 D	32 L	16 L	18	
KS	13221068 / R: 1838	->1821							
<a href="#">31</a>	<a href="#">APRAMAY MISHRA</a>	1.5	L	15 L	17 D	26 L	24 W	38	
KS	14100400 / R: 1250	->1273							
<a href="#">32</a>	<a href="#">KAUSTUBH SANJAY NIMKAR</a>	1.5	L	21 W	26 D	30 L	9 L	17	
KS	14100882 / R: 991P24->1111		N:3						
<a href="#">33</a>	<a href="#">TONY DUTIEL</a>	1.0	L	2 W	19 L	20 U	0 U	0	
MO	12602486 / R: 1886	->1870							
<a href="#">34</a>	<a href="#">PAUL GRAYDON BROWN</a>	1.0	L	7 L	8 L	35 W	38 L	27	
KS	12509993 / R: 1788	->1747							
<a href="#">35</a>	<a href="#">ADAM P ALBRIGHT</a>	1.0	L	22 L	25 W	34 L	26 L	24	
KS	14243081 / R: 1206	->1262							
<a href="#">36</a>	<a href="#">RONALD G LUTHER</a>	0.5	D	14 L	29 L	16 U	0 U	0	
MO	10365007 / R: 2230	->2200							
<a href="#">37</a>	<a href="#">TERRY L WRIGHT</a>	0.0	L	4 L	20 U	0 U	0 U	0	
KS	12345700 / R: 1839	->1817							
<a href="#">38</a>	<a href="#">SHRIVATSA S MALLADI</a>	0.0	L	28 L	18 L	19 L	34 L	31	
KS	14329682 / R: 831P21-> 826								



Kansas Open 2011 Playing Hall

**2011 Kansas Open, July 30-31, 2011, Reserve Section**  
**Sam N Un is the new 2011 Kansas State Champion**

Pair Num	Player Name USCF ID / Rtg (Pre->Post)	Total Pts	Round 1	Round 2	Round 3	Round 4	Round 5
1 KS	<a href="#">SAM N UN</a> 12571317 / R: 1728 ->1780	5.0 N:2	W 32	W 37	W 5	W 18	W 4
2 KS	<a href="#">SALVADOR MARTINEZ JR</a> 12558855 / R: 1776 ->1786	4.0 N:2	W 25	D 7	W 8	W 13	D 3
3 KS	<a href="#">SHANMUGASUNDARAM CHIDAMBARANATHAN</a> 14693085 / R: 1739P5 ->1773P10	4.0 N:3	W 33	D 28	W 22	W 12	D 2
4 KS	<a href="#">GEORGE R VERHAGE JR</a> 10368731 / R: 1620 ->1666	4.0 N:3	W 34	W 54	W 14	W 9	L 1
5 KS	<a href="#">LAURENCE COKER</a> 12174160 / R: 1612 ->1621	4.0 N:4	W 47	W 24	L 1	W 38	W 21
6 KS	<a href="#">GREG ANDERSON</a> 12904034 / R: 1565 ->1619	4.0 N:3	W 49	D 15	D 17	W 27	W 18
7 MO	<a href="#">KEN CRUMPLER</a> 12699083 / R: 1546 ->1612	4.0 N:3	W 35	D 2	W 52	D 15	W 19
8 KS	<a href="#">KARAN A MEHTA</a> 13867674 / R: 1593 ->1611	4.0 N:4	W 61	W 51	L 2	W 26	W 15
9 IA	<a href="#">WILLIAM BROICH</a> 12546672 / R: 1554 ->1605	4.0 N:3	W 57	W 56	W 19	L 4	W 14
10 KS	<a href="#">BRYAN LIU JIANG</a> 14097248 / R: 1348 ->1441	4.0 N:3	W 62	L 19	W 58	W 16	W 20
11 MO	<a href="#">WILLIAM D COLLIN</a> 12442386 / R: 1746 ->1741	3.5 N:3	W 26	W 21	L 18	H 0	W 28
12 AR	<a href="#">DR JASON QIAN</a> 13469141 / R: 1726 ->1720	3.5 N:4	W 40	W 22	H 0	L 3	W 25
13 OK	<a href="#">JEFF CARTER</a> 12580278 / R: 1641 ->1643	3.5 N:4	W 42	W 23	H 0	L 2	W 31
14 KS	<a href="#">BEN CHE CLAYTON</a> 12522572 / R: 1790 ->1762	3.0 N:4	W 53	W 36	L 4	W 30	L 9
15 KS	<a href="#">DAVID B LENHART</a> 10371597 / R: 1752 ->1732	3.0 N:4	W 39	D 6	W 28	D 7	L 8
16 KS	<a href="#">CURTIS HARTMAN</a> 12805542 / R: 1744 ->1705	3.0	L 36	W 47	W 53	L 10	W 38
17 KS	<a href="#">WILLIAM ALLEN MCWHORTER</a> 10891825 / R: 1704 ->1670	3.0	D 38	W 41	D 6	L 21	W 40
18 MO	<a href="#">MATTHEW W LARSON</a> 14278511 / R: 1675 ->1667	3.0 N:4	W 45	W 43	W 11	L 1	L 6
19 KS	<a href="#">JOEY MICHAEL KELLY</a> 14143543 / R: 1621 ->1607	3.0 N:4	W 27	W 10	L 9	W 24	L 7
20 KS	<a href="#">THOMAS A COOPER</a> 12357070 / R: 1569 ->1532	3.0	W 48	D 52	D 38	W 33	L 10
21 KS	<a href="#">LYLE TAYLOR</a> 12959210 / R: 1416 ->1442	3.0 N:4	W 60	L 11	W 34	W 17	L 5
22 KS	<a href="#">MILTON S ARAI LEE</a> 13261641 / R: 1417 ->1415	3.0	W 59	L 12	L 3	W 45	W 42
23 KS	<a href="#">DARYL R FOUARD</a> 12401335 / R: 1392 ->1367	3.0	W 50	L 13	L 26	W 57	W 47
24 KS	<a href="#">VENKATA S MALLADI</a> 14329676 / R: 1329P24->1341	3.0	W 55	L 5	W 56	L 19	W 43
25 KS	<a href="#">EMILY JOY CASTEEN</a> 14415228 / R: 1189P19->1241P24	3.0	L 2	W 61	W 51	W 36	L 12



26	<a href="#">WILLIAM LIU</a>	3.0	L	11 W	59 W	23 L	8 W	36
KS	14295205 / R: 1083P21->1217	N:4						
27	<a href="#">COLLETTE WRIGHT</a>	3.0	L	19 W	62 W	54 L	6 W	37
KS	13726833 / R: 1085 ->1203	N:4						
28	<a href="#">ZACHARY LANDON SCHUH</a>	2.5	W	58 D	3 L	15 W	52 L	11
KS	13760474 / R: 1541 ->1540	N:4						
29	<a href="#">MATT A JACOBS</a>	2.5	L	43 W	45 W	39 H	0 U	0
IA	14100196 / R: 1524 ->1497							
30	<a href="#">JIMMY J HUGGINS</a>	2.5	L	56 W	57 W	43 L	14 D	34
KS	12969222 / R: 1398 ->1359							
31	<a href="#">BRYCE A ROGERS</a>	2.5	H	0 L	38 W	48 W	32 L	13
KS	14160567 / R: 1377 ->1357							
32	<a href="#">SIYIN LI</a>	2.5	L	1 W	46 H	0 L	31 W	52
KS	13523650 / R: 1122 ->1181							
33	<a href="#">JOSEPH ANDREW MILLER</a>	2.5	L	3 W	49 W	37 L	20 D	35
KS	14178796 / R: 1134 ->1174							
34	<a href="#">REX XING</a>	2.5	L	4 W	44 L	21 W	51 D	30
KS	13233207 / R: 1054 ->1104							
35	<a href="#">CHINMAY KRISHNA</a>	2.5	L	7 L	39 W	62 W	54 D	33
KS	14433377 / R: 794P14-> 905P19							
36	<a href="#">PETER A BRADSHAW</a>	2.0	W	16 L	14 W	42 L	25 L	26
KS	12911486 / R: 1473 ->1444							
37	<a href="#">KRISHNA B-NAIR</a>	2.0	W	46 L	1 L	33 W	41 L	27
KS	14555877 / R: 1498P12->1416P17							
38	<a href="#">AVGUSTE ANTONOV</a>	2.0	D	17 W	31 D	20 L	5 L	16
TX	12890475 / R: 1097 ->1222	N:4						
39	<a href="#">LEROY E ASHER</a>	2.0	L	15 W	35 L	29 H	0 D	48
KS	12537402 / R: 1135 ->1128							
40	<a href="#">CONNOR RYAN THOMSON</a>	2.0	L	12 L	58 W	49 W	56 L	17
KS	14079530 / R: 1123 ->1113							
41	<a href="#">RACHEL N HASCH</a>	2.0	H	0 L	17 W	55 L	37 D	53
KS	12972136 / R: 1040 ->1073							
42	<a href="#">ANAND MEHTA</a>	2.0	L	13 W	50 L	36 W	60 L	22
KS	14243101 / R: 1049 ->1051							
43	<a href="#">ANDREI ELLIOTT</a>	2.0	W	29 L	18 L	30 W	53 L	24
KS	12971353 / R: 906 ->1030							
44	<a href="#">BRYAN A SCHILLIG</a>	2.0	L	54 L	34 H	0 D	55 W	57
MO	14691287 / R: 1032P4 ->1024P8							
45	<a href="#">ANDREW LIU</a>	2.0	L	18 L	29 W	46 L	22 W	60
KS	14295191 / R: 1001P21->1021							
46	<a href="#">GORDON S ARAI LEE</a>	2.0	L	37 L	32 L	45 B	0 W	55
KS	14256924 / R: 994 -> 990							
47	<a href="#">FRED A SMITH</a>	2.0	L	5 L	16 W	59 W	58 L	23
MO	13100001 / R: 972 -> 985							
48	<a href="#">H WAYNE SAMPSON</a>	2.0	L	20 D	55 L	31 W	61 D	39
TX	12300000 / R: 882 -> 950							
49	<a href="#">MAVERICK LEE LANDES LEWIS</a>	2.0	L	6 L	33 L	40 W	62 W	56
KS	14067673 / R: 862 -> 896							
50	<a href="#">GABRIEL T KONKEL</a>	2.0	L	23 L	42 L	57 W	59 W	58
KS	14685587 / R: Unrated-> 848P5							
51	<a href="#">NICK B WIDEMAN</a>	2.0	B	0 L	8 L	25 L	34 W	61
KS	13739343 / R: 102P8 -> 210P12							
52	<a href="#">DUANE D JOHNSON</a>	1.5	B	0 D	20 L	7 L	28 L	32
KS	12338320 / R: 1315 ->1285							





<a href="#">53</a>	<a href="#">JACK PEARCE</a>	1.5	L	14 W	60 L	16 L	43 D	41
KS	14345022 / R: 1024	->1006						
<a href="#">54</a>	<a href="#">WEBB MILLER</a>	1.0	W	44 L	4 L	27 L	35 U	0
MO	12077090 / R: 1341	->1281						
<a href="#">55</a>	<a href="#">BRUCE ELLIOTT</a>	1.0	L	24 D	48 L	41 D	44 L	46
KS	13456631 / R: 1272	->1174						
<a href="#">56</a>	<a href="#">AUGUSTUS GLAZIER</a>	1.0	W	30 L	9 L	24 L	40 L	49
MO	14677001 / R: 1275P3	->1110P8						
<a href="#">57</a>	<a href="#">WILLIAM BROWN</a>	1.0	L	9 L	30 W	50 L	23 L	44
KS	14462201 / R: 932P12-> 925P17							
<a href="#">58</a>	<a href="#">JOHN BURGESS FLY</a>	1.0	L	28 W	40 L	10 L	47 L	50
KS	14664266 / R: 820P7 -> 831P12							
<a href="#">59</a>	<a href="#">SIDDHARTH JASTI</a>	1.0	L	22 L	26 L	47 L	50 W	62
KS	14435023 / R: 622P13-> 607P18							
<a href="#">60</a>	<a href="#">LILLIAN BROWN</a>	1.0	L	21 L	53 W	61 L	42 L	45
KS	14462196 / R: 350P17-> 437P22							
<a href="#">61</a>	<a href="#">EMILY M HASCH</a>	0.0	L	8 L	25 L	60 L	48 L	51
KS	12972121 / R: 857 -> 743							
<a href="#">62</a>	<a href="#">XAVIER M KONKEL</a>	0.0	L	10 L	27 L	35 L	49 L	59
KS	14685593 / R: Unrated-> 200P5							

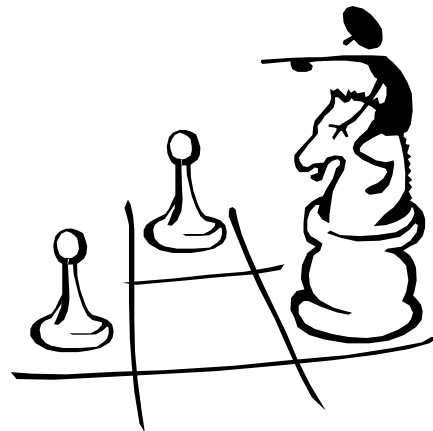


## 2011 Kansas Quick, July 29, 2011, Quick - G10 5 rounds SS Conrad Holt is 2011 Kansas Quick Chess Champion

Pair Num	Player Name USCF ID / Rtg (Pre->Post)	Total Pts	Round 1	Round 2	Round 3	Round 4	Round 5	
<a href="#">1</a>	<a href="#">CONRAD HOLT</a> KS 12937909 / Q: 2316 ->2336	5.0	W	13 W	9 W	11 W	6 W	5
<a href="#">2</a>	<a href="#">RONALD G LUTHER</a> MO 10365007 / Q: 2074 ->2081	4.0	W	15 W	17 L	6 W	11 W	9
<a href="#">3</a>	<a href="#">BRIAN Y YANG</a> KS 12946778 / Q: 1959 ->1973	4.0	W	16 L	10 W	17 W	12 W	6
<a href="#">4</a>	<a href="#">ANSAR LEMON</a> MO 14155305 / Q: 1911 ->1939	4.0	W	21 L	6 W	15 W	10 W	8
<a href="#">5</a>	<a href="#">MAXX W COLEMAN</a> KS 12751215 / Q: 2120 ->2119	3.5	W	20 W	12 W	10 D	8 L	1
<a href="#">6</a>	<a href="#">MICHAEL A BROOKS</a> MO 11045685 / Q: 2514 ->2491	3.0	W	19 W	4 W	2 L	1 L	3
<a href="#">7</a>	<a href="#">ABHISHEK MALLELA</a> MO 12888811 / Q: 2079 ->2057	3.0	W	23 L	11 W	14 L	9 W	17
<a href="#">8</a>	<a href="#">TOM BROWNSCOMBE</a> KS 12403209 / Q: 2061 ->2048	3.0	D	14 W	19 W	22 D	5 L	4
<a href="#">9</a>	<a href="#">KYLE CAMARDA</a> KS 12399769 / Q: 1814 ->1829	3.0	W	24 L	1 W	23 W	7 L	2
<a href="#">10</a>	<a href="#">TONY DUTIEL</a> MO 12602486 / Q: 1809 ->1829	3.0	W	26 W	3 L	5 L	4 W	21
<a href="#">11</a>	<a href="#">BEN CHE CLAYTON</a> KS 12522572 / Q: 1772 ->1809	3.0	W	25 W	7 L	1 L	2 W	14
<a href="#">12</a>	<a href="#">TERRY L WRIGHT</a> KS 12345700 / Q: 1748 ->1750	2.5	W	27 L	5 W	18 L	3 D	13
<a href="#">13</a>	<a href="#">JUDSON TEMPLE</a> OK 10330912 / Q: 1729 ->1727	2.5	L	1 L	14 W	24 W	18 D	12
<a href="#">14</a>	<a href="#">BENJAMIN M GRADSKY</a> MO 12717265 / Q: 1682 ->1719	2.5	D	8 W	13 L	7 W	22 L	11



14	<a href="#">BENJAMIN M GRADSKY</a>	2.5	D	8 W	13 L	7 W	22 L	11
MO	12717265 / Q: 1682	->1719						
15	<a href="#">DARYL R FOUARD</a>	2.5	L	2 W	24 L	4 D	19 W	22
KS	12401335 / Q: 1288	->1373						
16	<a href="#">APRAMAY MISHRA</a>	2.5	L	3 L	22 W	25 W	20 D	19
KS	14100400 / Q: 1013P19->1122P24							
17	<a href="#">DAN B HOLMES</a>	2.0	W	18 L	2 L	3 W	23 L	7
KS	13221068 / Q: 1751	->1750						
18	<a href="#">DAVID B LENHART</a>	2.0	L	17 W	20 L	12 L	13 W	23
KS	10371597 / Q: 1752P10->1681P15							
19	<a href="#">ROBERT A NABORN</a>	2.0	L	6 L	8 W	21 D	15 D	16
PA	12506117 / Q: 1704	->1680						
20	<a href="#">LAURENCE COKER</a>	2.0	L	5 L	18 W	27 L	16 W	25
KS	12174160 / Q: 1431	->1396						
21	<a href="#">DAVID BRATON</a>	2.0	L	4 W	27 L	19 W	24 L	10
MO	13549647 / Q: 898	-> 951						
22	<a href="#">SAM N UN</a>	1.5	H	0 W	16 L	8 L	14 L	15
KS	12571317 / Q: 1675	->1638						
23	<a href="#">PETER A BRADSHAW</a>	1.0	L	7 W	25 L	9 L	17 L	18
KS	12911486 / Q: 1367	->1355						
24	<a href="#">MAVERICK LEE LANDES LEWIS</a>	1.0	L	9 L	15 L	13 L	21 W	27
KS	14067673 / Q: 733	-> 760						
25	<a href="#">NICK B WIDEMAN</a>	1.0	L	11 L	23 L	16 W	27 L	20
KS	13739343 / Q: 102P9 -> 210P14							
26	<a href="#">RICK HODGES</a>	0.0	L	10 U	0 U	0 U	0 U	0
KS	12491989 / Q: 1817	->1805						
27	<a href="#">AUGUSTUS GLAZIER</a>	0.0	L	12 L	21 L	20 L	25 L	24
MO	14677001 / Q: 1324P3 -> 831P8							



Kansas Open 2011 Playing Hall

# My Kansas Open Adventure

## My Kansas Open Adventure

Brian Yang

I was the 2010 Kansas Reserve Champion so moving up to the open section was an incredible experience and would produce some of the best games I've played. The previous night I tied for 2nd in the Kansas Quick, after beating IM Michael Brooks in the last round in a very aggressive game of Caro Kann, I having the black pieces.

IM Michael Brooks (2514) - Brian Yang (1959)

1. e4 c6 2. d4 d5 3. ♘c3 dxe4 4. ♗xe4 ♗d7 5. ♗f3 ♗gf6 6. ♗xf6 ♗xf6 7. ♗e5 ♙f5 8. ♙e2 e6 9. g4 ♙g6 10. h4 h5 11. ♗xg6 fxg6 12. ♖d3 hxg4 13. ♗xg6 ♗e7 14. ♙d2 ♗b6 15. O-O-O ♗d8 16. ♙xg4 ♗d6 17. ♙f4 ♗xd4 18. ♙e3 ♗xg4! [diag.]



19. ♗d7 [19. ♙xb6

loses a piece] 19... ♗xd7 20. ♗xg4 ♗b5 21. ♗d1 ♗f6 22. ♗d4 ♗f7 23. ♗xa7 ♗xh4 [\*]

And the rest was a blur... In the end, he came back with three connected passed pawns for the piece but lost on time.

I was also the Assistant TD of the event, arriving early in order to perform tournament duties. The event drew record numbers with numerous on-site entries. After all this was managed, I was dead tired by the beginning of the first round.

“wAKInG uP tO a MaStEr” Yang, Brian(1843) - Luther, Ron(2230)

2011 Kansas Open, 30.07.2011 - Round 1

1.f4 d6 2.Nf3 g6 After playing this move, I walked around for 10-15 minutes because I was not ready to play chess, but was still thinking about the on-site registration. Afterwards, I continued with Bird's opening. 3.e3 Bg7 4.Nc3 a6 5.Bc4 e6 [diag.]



Four pawns and a piece developed vs. White's three pieces and two pawns with ready to castle. I considered a sacrifice with f5 but decided against it. I Black's plan is to gain space on the queenside. 6.a4 Ne7 7.Qe2 c5 8.d3 Nbc6 9.O-O Bd7 10.Bd2 Qc7 11.Rab1 Rc8 12.Kh1 h6 [diag.]



I assumed that he was trying to open the c-file, and that my bishop on c4 would be pushed back. I was not concerned by this, and was thinking of the

Spanish Bishop which goes back to a2, en route to b1, but still eyes f7, indirectly. **13.e4?!** This should have been prepared. Although I saw he could play a knight to the outpost on d4, I should have played something like Nd1-f2, c3, and then e4. Since his king is still in the center, I was ambitiously trying to open up the game. **13...Nd4 14.Qd1 Bc6 15.b4 d5 [diag.]**

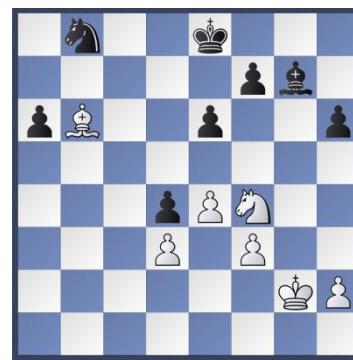


The plan I chose was to bring the bishop back to a2, however 16.exd5 exd5 17.b5 dxc4 18.bxc6 cxd3 19.cxb7 dxc2 is slightly better than just dropping a pawn. **16.Ba2 Nxf3 17.gxf3 d4 18.Ne2 Bxa4** At this point, I was ready to resign with the Black's immediate threat of opening the c-file and dominating my c2 pawn. I decided to try and counter by taking on c5, then taking on b7 with the idea of Rxe7+... but all those plans were in my dreams...

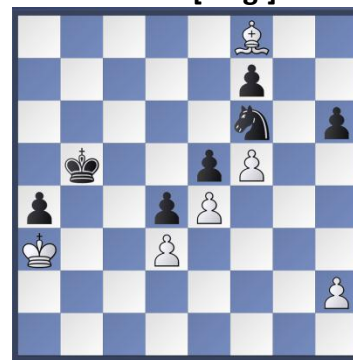
**19.bxc5 Qxc5 20.Rxb7 Qxc2 [diag.]**



I had 37:25 to Luther's 42:06. After searching and searching for a way to neutralize the position, I found this move out of the blue: **21.Bb3!** All the x-rays and having a bishop attacking black's bishop and queen while being protected by the rook on b7 and Queen on d1. The position simplify after: **21...Bxb3 22.Rxb3 Qxd1 23.Rxd1 Kd7 24.Rc1?!** A better move was Rdb1, doubling on the b-file and aiming to win the a6 pawn. Black's Rc2 threat could be neutralized with R(1)3b2. **24...Rb8 25.Rcb1 Rxb3 26.Rxb3 Rc8 27.Ba5 Nc6 28.Rb7+ Ke8 29.Bb6 g5 30.Kg2 gxf4 31.Nxf4 Rb8 32.Rxb8+ Nxb8 [diag.]**



At this point I thought was winning as my pieces were well advanced and my king is in that "square" so that a-pawn was going nowhere. One lesson did arise from this game: I need to have better endgame technique. I played too many King moves that were perhaps unnecessary. **33.Nh5 Bh8??** potentially trapping the bishop **34.Kf2 Kd7 35.f4 e5 36.f5 ...trapping the bishop 36...Nc6 37.Bc5** still having oversight on the a-pawn so a5 Nb5 can't happen. **37...a5 38.Ke2 a4 39.Kd2 Ne7 40.Kc2 Ng8 41.Kb2 Bf6 42.Ka3 Kc6 43.Bf8 Kb5 44.Nxf6 Nxf6 [diag.]**



Here I tried to play an intermediate move. Bg7 instead of directly capturing on h6. **45.Bg7 Ng4 46.Kb2??** This gives back black all the advantages as he after h3, Nf2 forks and then captures the d3 pawn with check! **46...h5** So a side-story... I had 7-so minutes and Luther had 24 minutes. He played this move and immediately went to recording the move without hitting his clock. I used this towards my advantage by calculating all the endgame variations. The time was ticking and each second running down on his clock would prove beneficial if we were to blitz it out... and that we did. **47.h3 Nf2 48.Kc2 Nxb3 49.Bxe5 Kc5 50.Bf6 Nf4 51.Be7+ Kc6 52.Bg5 Ng2!! [diag.]**



So I am now down to a few minutes and I just realized my bishop cannot prevent the h-pawn passer from queening. There is no way in. So, I played e5,

with the idea of a pawn breakthrough.

**53.e5 Kd5??** This lets me complete the pawn breakthrough...Kd7 just flat out wins. **54.e6 Ne1+ 55.Kb1 fxe6 56.f6 Nf3 57.f7 Nxe5 58.f8Q ½-½** Now you all may be wondering why this was a draw, even though I'm a fast blitz player and I had 3:47 minutes to Luther's 4:30. Well the resulting position occurred after White played Qg7+. **[diag.]**



I played this, and psychologically I was defeated because when I play blitz, I do not let passers get this close to promoting! I mumbled "draw?" that only few people heard it. He accepted and I stormed off to the hall... (though I came back and was a good sport since he was beating me at the beginning of the game). I immediately saw that Black had to move the King, and then Qc3 just

wins for white. So close to beating a master...\*sigh

My game against Luther was the longest of the round and we had only 10 minutes before the start of the next round. I was black against Tom Brownscombe and I was hoping he would play e4 and I would proceed by playing the Caro Kann and go for a draw.

"...All-in"

**Brownscombe, Tom(2200)**

**- Yang, Brian(1843)**

2011 Kansas Open,  
30.07.2011 - Round 2

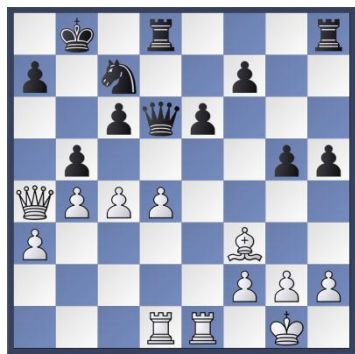
**1.e4 c6 2.d4 d5 3.Nc3 dxe4 4.Nxe4 Nd7 5.Nf3 Ngf6 6.Nxf6+ Nxf6 7.Bf4 Bg4 8.Be2 Bxf3 9.Bxf3 e6 10.0-0 Bd6 11.Qd2 Qc7 12.Bxd6 Qxd6 [diag.]**



Here I offered a draw, hoping he would accept and I can enjoy my Very Berry Strawberry shake from Steak & Shake. but he played Rad1. Since he played this move, I decided to go all-in, just

like Texas Hold'em: Shove all your chips towards the center. I have nothing to lose, I wasn't favored to win as two IM's were there... and I was underdog so queenside castle and let's pawn storm each other...

**13.Rad1 0-0-0 14.Rfe1 h5 15.Qa5 Kb8 16.b4 Nd5** Maybe Ng4 was better and then f5, g4. I, however, choose this route because I could potentially win a pawn or trap his queen with mass pawns. **17.a3 b6 18.Qa6 g5 19.c4 Nc7 20.Qa4 b5 [diag.]**



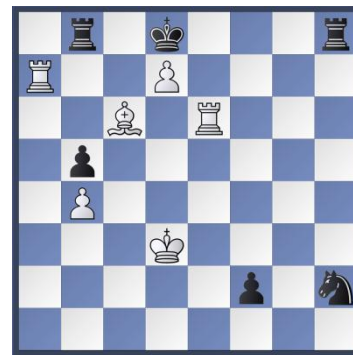
The last three moves were played very quickly though I thought it was all forced after he attacked my knight on c4. I thought I was winning because all the tempos I'm getting off the queen, and my kingside pawnstorm was a lot faster than his queenside. **21.Qb3 g4** To remove the bishop off the long a8-h1 diagonal **22.Be2 f5 23.a4 a6**

**24.axb5 axb5 25.Qa3 h4 26.Qa5 Kb7?? [diag.]**



This was the first stupid mistake I have made in a long time - playing too fast. Was it the Kansas Quick or my first round Queen vs. Knight and 3 passed pawns against Ron? My thought was just one variation: Qb6+ Kxb6 c5+ Kb7 cxd6 Rxd6 and I won a pawn. Just after I punched the clock I saw c5 first, gaining a tempo and then Qb6 check. **27.c5 Qd5 28.Qb6+ Kc8 29.Ra1 Kd7 30.Ra7 Rc8** Forced. **31.Bf1 f4??** ...too slow. The immediately g3 wins or at least draws in all variations. In our post-modern analysis after the game, Brownscombe said he would have played Be2 after g3 which results in beautiful combinations for black. **31...g3 32.Be2? h3 33.Bf3 gxf2+ 34.Kxf2 Qxd4+ 35.Kf1 hxg2+ 36.Bxg2 Qf4+ 37.Kg1 (37.Ke2 Rxe2 -) Qxh2** and black should have perpetual at least, but instead of I went

this route which simplifies everything and White has a huge advantage. **32.Bd3 g3 33.Be4 gxf2+ 34.Kxf2 Qxd4+ 35.Kf1 h3 36.Qxc6+ Kd8 37.Qd6+ Qxd6 38.cxd6 hxg2+ 39.Bxg2 Nd5 40.d7 Rb8 41.Rxe6 Ne3+ 42.Kf2 Ng4+ 43.Ke2 Nxe2 44.Bc6 f3+ 45.Kd3 f2 1-0 [diag.]**



I had to get in the last move with the f2, and then resign. It makes me wonder... what if I didn't play that silly 26...Kb7, could I have queen with check?...

Round 3 pairing was up within 30 minutes so without lunch or dinner, I played on eating Welch's fruit snacks.

**"Marco Polo... Not Hello"**  
**Yang, Brian(1843) - Hodges, Rick(1893)**  
 2011 Kansas Open  
 30.07.2011

I found myself having a difficult time concentrating. Every move

seemed okay to me, even if it blundered. Thus, I stuck to my Bird's opening. **1.f4 d5 2.Nf3 Nf6 3.e3 Bg4 4.h3 Bxf3 5.Qxf3 e6 6.b3 c5 7.Bb2 Nc6 8.Bb5 a6 9.Bxc6+ bxc6 10.0-0 Bd6 11.d3 Qc7 [diag.]**



Here my idea was to play Nd2 with e4, e5 follow up, however his e5 push was faster than my idea, thus it prompted the next move: **12.e4 e5 13.f5 h5 14.Nd2 h4 15.Rad1 [diag.]**



Here is when I heard "Hello!" "Hello!" throughout my head. I did the "What the..." motion to Kyle Camarda who was smelling/laughing at the situation. "Hello" kept repeating in my head and I thought someone was trying to point out an

obvious mate or an obvious blunder. I thought my position was fine but I went out the tournament hall for 15 minutes. Then it became clear: I saw the pool being occupied by a bunch of basketball players yelling out MARCO... and the response from others POLO!! After notifying the hotel staff, the Marco Polo in my head ceased. **15...Nh5 drops a pawn 16.exd5 Ng3 17.Rfe1 Rh5 18.Ne4 Rxf5 19.Qg4 g6** Apparently I missed a variation here that wins outright: **20.Nxd6+ Qxd6 21.Qxh4 cxd5 22.Qxg3 d4 23. Rf1 0-0-0 24. Rxf5 gxf5 +- 20.Nxg3 hxg3 21.dxc6 0-0-0 22.Rf1 Kb8 23.Rxf5 gxf5 24.Qxf5 c4 [diag.]**



Here is where I thought I was going to lose the game because of the exposed a7-g1 diagonal. Even after his Queen takes my pawn on c6, my h3 pawns has no defenders except the Queen. **25.Rf1 f6 26.Kh1 Qxc6 27.bxc4 Rh8 28.Bc3 Bc5 29.Qf3**

**Qe6 30.Rb1+ Bb6 31.c5 Ka7 (31...Rxf3+ 32. Kg1) 32. cxb6 Kb8 Qxg3 30.Qxg3 Ka7?? 31.Qg7+ 1-0** After a long day, I was looking forward to my bed.

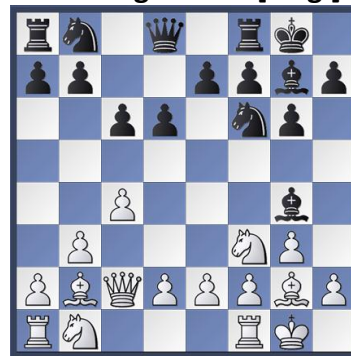
I want to thank all my opponents who didn't immediately start the clock as I was walking around doing my Assistant TD duties. After the long KCA meeting, I was disorientated and got to play black against an English opening.

### "Knightmares"

**Meliti, David(1945) - Yang, Brian(1843)**

2011 Kansas Open, 31.07.2011

**1.c4 g6 2.Nf3 Bg7 3.g3 Nf6 4.Bg2 0-0 5.0-0 c6 6.Qc2 d6 7.b3 Bg4 8.Bb2 [diag.]**



The last time I remember playing against an English opening was against Nathaniel Fest who destroyed me with double fianchetto bishops. My plan was to close up the position with several pawn

moves, neutralize white's bishops and play with the knights. **8...Bxf3 9.Bxf3 Qc7 10.d4 Nbd7 11.e4 e5** closing the light-square bishop with his e4 pawn and closing the dark square bishop with the occupation of the e5 pawn - my bishop is "bad" but was planning on Bh6 and trade it off. **12.Bg2 Rfe8** I spent a lot of time on this move: the case of the wrong rook. If Rae8, my fear was dxe5 dxe5 and Ba3, trapping my rook and c5-pawn move will be forced. **13.d5 c5** semi-closed. **14.Nc3 a6 15.a4 Ng4 16.h3 Nh6** This knight maneuver prepares f5 push, but unfortunately the Rook is on e8... **17.Bc1!** shifting toward the kingside **17...Rf8 18.g4 Kh8** making space for my knight **19.Be3 Ng8** I did not want him to trade off my knight for his bishop. **20.Rab1 Ndf6 21.f3 h5** [diag.]



I was hoping he opens up the g-file for my rooks, but if g5 my Nh7 followed with

f6 should open up the f-file. **22.Qf2 Nh7** "=" was what I wrote on my notation sheet... this is something I would play in a blitz game. **23.gxh5 gxh5 24.Ne2 f5** White was preparing f4 the whole time and I was expected this but I continued with my plan of closing everything off. **25.exf5 Qd7** The immediate capture would lose a tempo with Ng3. **26.Ng3 h4 27.Ne4 Ne7 28.f6 Bxf6 29.Nxf6 Rxf6 30.Qxh4** [diag.]



Mission accomplished: Double knights vs. Double bishops in a very closed off center position, with the g-file open. Meliti thought the pin on the h7-knight was something but black gets several tempos off the queen. Here my decision was Rg1 followed by Nf5 or Nf5 followed by Rg1 - I chose the latter. **30...Nf5 31.Qe1 Rg8 32.Kh2 Nxe3 33.Qxe3 Rf4** no more f4 counter-play and going to stack up on g2 or h3 **34.Rg1 Rg5**

**35.Bf1 Rh5 36.Rg3 Rfh4 37.Qg1 Ng5** [diag.]



**38.Rxg5 38.Qe2 Qf5 38...Rxh3+ 39.Kg2 39. Bxh3 Qxh3# 39...Rxg5+ 0-1**

In between the 4<sup>th</sup> and 5<sup>th</sup> round the KCA annual meeting resumed and I was elected President. I felt I accomplished a lot this weekend but 5<sup>th</sup> round was posted and another battle awaits:

### "Fatigue"

Yang, Brian(1843) - Crooks, John(1998)

2011 Kansas Open,  
31.07.2011

**1.f4 d5 2.Nf3 c5 3.e3 Nf6 4.b3 g6 5.Bb2 Bg7 6.Be2 0-0 7.0-0 Nc6 8.Ne5 Qc7 9.Nxc6 Qxc6** [diag.]





After wandering around the tournament hall and kibitzing everyone's game, while taking pictures for the bulletin, I had this move in my mind. The time was my 1:20 to his 1:45. He spent the next 20 minutes calculating this...

**10.g4 b5 11.g5 Nh5 12.Bxg7** Here I saw the other 2.5's draw and I thought 3.0 could get Class A prize money. I offered the draw **12..Nxb7 13.Nc3 a6** Here, I decided to take an officers' picture before everyone left so I gathered

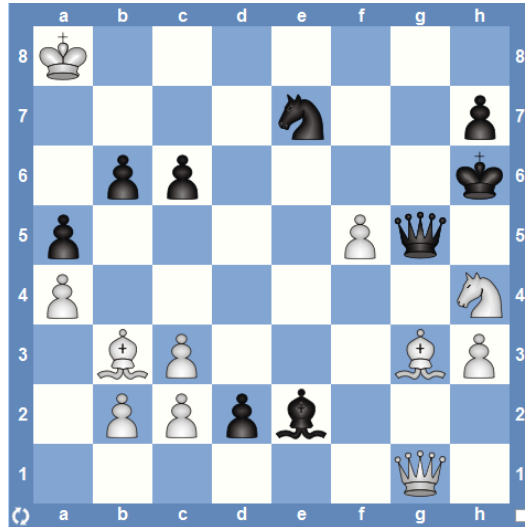
Duane, Laurence, and Kyle out to the lobby to take a picture. After the picture, John thought the draw offered was still on, but I told him he formally declined it after playing Nxb7. I said "I will think about the draw because I'm considering Nxb4, winning." But I was too tired to calculate anymore chess position. After 14. Nxb5 Qxb5 15.Bf3 skewering the rook. 15...Bg4 16.Bxb4 and White is up a pawn with a Bishop vs. knight game or

16. Bxb5 Bxb1 17.Bxa8 Bxc2, winning the exchange. I accepted the draw offer due to fatigue.  $\frac{1}{2}$ - $\frac{1}{2}$

So that's my 2011 Kansas Open Chess Adventure. Kyle and I will be going through all the games submitted and will publish, at the very least, all of IM Conrad Holt's Open Champion games and Sam Un's Reserve Games in the *Plains Chess: 2011 Winter Edition*.

### Solution to Previous Puzzle:

1. f6! d1=Q 2. Qxd1 Bxd1 3.fxe7 Bh5 (Black cannot take the pawn because Nf5+ forks the queen) 4. Bf2 Bg6 5. e8=Q Bxe8 6. Be3 Bd7 7.Bxg5+ Kxg5 8. Nf3 Kf4 9. Nd4 - White is a piece up and can win the game easily.



### New Puzzle:

White to Move: find the best move

