

# Plains Chess Fall 2008

Editors: Dan Holmes and Kyle Camarda

Submissions are welcomed and can be sent to Dan at [thunderboltdan@gmail.com](mailto:thunderboltdan@gmail.com),  
or 2411 Louisiana St. Lawrence, KS 66046.

Also check out the KCA website at <http://www.kansaschess.org>.



## 2008 KANSAS OPEN REPORT

The 2008 Kansas Open, July 18<sup>th</sup> to 20<sup>th</sup>, was held in Lindsborg, Kansas. Both the Bughouse and the Kansas Quick championships were held July 18<sup>th</sup> at the Karpov Chess School. The Open and Reserve Championships were held July 19<sup>th</sup> and 20<sup>th</sup> at the Bethany College library meeting hall. There were 24 participants in the Quick event and 45 total in the Open and Reserve events (13 in the Open section and 32 in the Reserve section). The new event, the Bughouse championship, had 7 teams of two players. The Bughouse Championship had a tie for first with 4 of the 7 participating teams finishing with 6 out of 8 possible points. On tiebreaks, the team of **Kyle Sciolaro and Kyle Camarda took 1<sup>st</sup> place, and they are our new state Bughouse champions.**

The Quick tourney had a two way tie for first with 4.5 points out of 5 possible: Max Coleman and Conrad Holt tying. On tiebreaks, **Maxx Coleman is our 2008 Quick Chess Champion.** This is the 3<sup>rd</sup> year in a row Maxx has won the Quick chess championship. Jason Wawrzaszek and Kyle Sciolaro finished next tied at 4.0 points each. The Scholastic winners were first place Christopher Purdy, second place John Mayhew, and third place Andrew Ritter.

The Open section, like the Quick tourney, had a tie for first place between Maxx Coleman and Christopher Purdy with 4.0 points out of 5 possible. On tiebreaks, **Christopher Purdy is our new 2008 Kansas Chess Champion.** Conrad Holt and Tom Brownscombe finished next, each with 3.5 points out of 5.

The **Reserve championship was won by Will Teague.** As he is from Kansas, he is our new Reserve champion. He finished alone at 4.5 points out of 5 possible. Tied at 4.0 points were William Quinlan and Peter Lesslie. The scholastic winners were first place Andrew Ritter, second place Jesse Pritchard, and third place Michael Christian. Thanks to tournament director Tony Dutiel, and thanks once again to the Karpov Chess School and Bethany College for the use of their facilities. Once again we recognize that many participants in the 2008 Kansas Open also participated in the Karpov Chess camp in Lindsborg. The camp ran the week before and the week after the Kansas Open.

-Laurence Coker  
2008 Kansas Open Organizer  
KCA Treasurer and Website manager

Kansas Quick Results (note: ratings shown are Quick Ratings)

1	MAXX COLEMAN	2021	->2036	4.5	W	10	W	3	W	7	D	2	W	5
2	CONRAD HOLT	1956	->1967	4.5	W	16	W	4	W	15	D	1	W	8
3	JASON WAWRZASZEK	1641	->1714	4.0	W	23	L	1	W	11	W	6	W	7
4	KYLE SCIOLARO	1575	->1660	4.0	W	20	L	2	W	17	W	15	W	12
5	TOM BROWNSCOMBE	2103	->2082	3.0	W	24	L	7	W	13	W	8	L	1
6	KYLE CAMARDA	1877	->1854	3.0	W	11	L	15	W	10	L	3	W	13
7	CHRISTOPHER PURDY	1656	->1707	3.0	W	21	W	5	L	1	W	9	L	3
8	BILL QUINLAN	1674	->1679	3.0	W	18	W	17	W	19	L	5	L	2
9	PETER RUPPRECHT	1597	->1580	3.0	L	19	W	18	W	16	L	7	W	17
10	J A MONTERO	1541	->1549	3.0	L	1	W	23	L	6	W	16	W	19
11	RALPH E BOWMAN	1497	->1512	3.0	L	6	W	22	L	3	W	18	W	15
12	BOB HOLLIMAN	2080	->2045	2.5	D	13	L	19	W	21	W	14	L	4
13	DAN HOLMES	1567	->1609	2.5	D	12	W	14	L	5	W	19	L	6
14	FRANK BERRY	1734	->1694	2.0	L	17	L	13	W	22	L	12	W	21
15	SEAN BAKER	1601	->1592	2.0	W	22	W	6	L	2	L	4	L	11
16	C J ARMENTA	1470	->1448	2.0	L	2	W	20	L	9	L	10	W	22
17	DINKO SKERLEV	1416	->1428	2.0	W	14	L	8	L	4	W	21	L	9
18	WILL TEAGUE	1310	->1321	2.0	L	8	L	9	W	20	L	11	W	24
19	TONY CHENG	773	-> 959	2.0	W	9	W	12	L	8	L	13	L	10
20	ARAVINDAKRISHNA GANAPATHY	868	-> 947	1.5	L	4	L	16	L	18	D	24	W	23
21	JOHN MAYHEW	1086	->1134	1.0	L	7	W	24	L	12	L	17	L	14
22	THOMAS CLAMAN	1065	->1069	1.0	L	15	L	11	L	14	W	23	L	16
23	ANDREW GUY RITTER	938	-> 943	1.0	L	3	L	10	W	24	L	22	L	20
24	KEVIN NYBERG	1570	->1457	0.5	L	5	L	21	L	23	D	20	L	18

Kansas Open Results (Open Section)

1	MAXX COLEMAN	2161	->2167	4.0	W	7	W	13	D	3	D	5	W	6
2	CHRISTOPHER PURDY	1663	->1854	4.0	W	10	W	9	D	5	W	3	D	4
3	CONRAD HOLT	2250	->2244	3.5	W	8	W	4	D	1	L	2	W	10
4	TOM BROWNSCOMBE	2210	->2202	3.5	W	11	L	3	W	8	W	10	D	2
5	BOB HOLLIMAN	2100	->2100	2.5	D	12	W	6	D	2	D	1	U	
6	DAVID MELITI	1865	->1885	2.5	D	9	L	5	W	11	W	7	L	1
7	RON PASIK	1804	->1819	2.5	L	1	D	11	W	9	L	6	W	8
8	FRANK BERRY	1800	->1817	2.5	L	3	B		L	4	W	12	D	9
9	JAMES ELLIS	2200	->2200	2.0	D	6	L	2	L	7	W	13	D	8
10	KYLE CAMARDA	1890	->1882	2.0	L	2	W	12	W	13	L	4	L	3
11	JUDSON TEMPLE	1800	->1800	2.0	L	4	D	7	L	6	B		D	12
12	JOHN PRITCHARD	1726	->1721	2.0	D	5	L	10	B	0	L	8	D	11
13	J A MONTERO	1632	->1616	1.0	B		L	1	L	10	L	9	L	7

Kansas Open Results (Reserve Section)

1	WILL TEAGUE	1465	->1622	4.5	W	20	W	9	W	5	D	3	W	4
2	BILL QUINLAN	1766	->1765	4.0	W	24	W	11	L	6	W	15	W	10
3	PETER LESSLIE	1528	->1617	4.0	W	32	D	5	W	7	D	1	W	6
4	TERRY WRIGHT	1789	->1780	3.5	W	13	W	10	W	8	D	6	L	1
5	TOM PHILLIPS	1718	->1712	3.5	W	23	D	3	L	1	W	19	W	9
6	KEVIN NYBERG	1609	->1660	3.5	W	22	W	26	W	2	D	4	L	3
7	KYLE SCIOLARO	1616	->1610	3.5	W	18	D	12	L	3	W	24	W	15
8	PETER RUPPRECHT	1622	->1617	3.0	W	17	W	19	L	4	H		D	12

9	DAN HOLMES	1622	->1609	3.0	W	28	L	1	W	16	W	13	L	5
10	C J ARMENTA	1513	->1523	3.0	W	14	L	4	W	23	W	11	L	2
11	RALPH BOWMAN	1500	->1500	3.0	W	30	L	2	W	18	L	10	W	20
12	DARYL FOUARD	1474	->1480	3.0	W	21	D	7	L	15	W	17	D	8
13	TOM MARTIN	1279	->1404	3.0	L	4	W	14	W	26	L	9	W	19
14	TONY CHENG	1022	->1148	3.0	L	10	L	13	W	21	W	28	W	23
15	ALAN NEAL	1586	->1561	2.5	D	25	W	31	W	12	L	2	L	7
16	WEBB MILLER	1383	->1362	2.5	L	26	W	22	L	9	W	25	D	18
17	ARAVINDAKRISHNA GANAPATHY	1082	->1079	2.5	L	8	D	29	W	31	L	12	W	24
18	ANDREW RITTER	943	->1028	2.5	L	7	W	21	L	11	W	31	D	16
19	ED MEFFORD	1510	->1500	2.0	W	29	L	8	W	28	L	5	L	13
20	JESSE PRITCHARD	1101	->1084	2.0	L	1	L	28	W	32	W	22	L	11
21	KATRINA PRITCHARD	1162	->1069	2.0	L	12	L	18	L	14	W	30	W	29
22	HAROLD ORR	928	->937	2.0	L	6	L	16	W	30	L	20	W	25
23	LYLE TAYLOR	1193	->1149	1.5	L	5	W	32	L	10	D	29	L	14
24	THOMAS CLAMAN	1089	->1064	1.5	L	2	W	30	H		L	7	L	17
25	FLOYD GEASLAND	881	->892	1.5	D	15	L	27	W	29	L	16	L	22
26	JASON WAWRZASZEK	1789	->1752	1.0	W	16	L	6	L	13	U		U	
27	LAURENCE COKER	1523	->1524	1.0	U		W	25	U		U		U	
28	LEROY ASHER	1031	->1038	1.0	L	9	W	20	L	19	L	14	U	
29	MICHAEL CHRISTIAN	612	->668	1.0	L	19	D	17	L	25	D	23	L	21
30	MATTHEW RICHERT	579	->564	1.0	L	11	L	24	L	22	L	21	B	
31	MATTHEW RHOADS	433	->429	1.0	B	0	L	15	L	17	L	18	U	
32	KRISTIN MELITI	825	->806	0.0	L	3	L	23	L	20	U		U	

This crucial fourth round matchup, which showcases the 2008 State Champion, was between two of the state's top junior players.

#### Round 4

White: Christopher Purdy

Black: Conrad Holt

Comments by Dan Holmes

1. e4 e6 2. d4 d5 3. Nc3 Nf6 4. e5 Nfd7  
5. f4 c5 6. Nf3 Nc6 7. Be3 cxd4 8.  
Nxd4 Bc5 9. Qd2 O-O 10. O-O-O a6 11.  
Nb3 Be7 12. h4 b5 13. g4 Na5 14. Nxa5  
Qxa5 15. Kb1 b4 16. Ne2 Qc7 17. g5  
Nb6 18. Bxb6 Qxb6 19. Nd4 Bc5 20.  
Rh3Rd8 21. h5 a5 22. Nb3 Bf8 23. Bd3  
(see diagram) 23... g6??

After 23...a4, Black would have a slight edge, but both sides would have attacking possibilities.

24. Rdh1

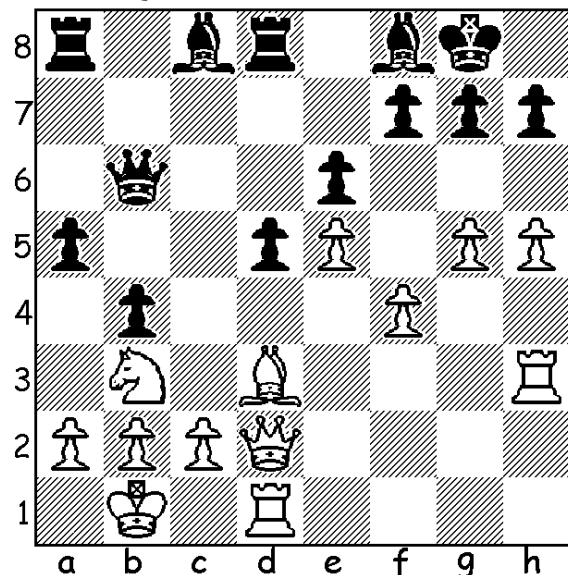
The immediate hxd6 would also be very strong.

24... Ra7 25. Qh2 Rdd7 26. hxd6 fxd6

27. Bxg6 hxd6??

This allows White to force mate in five moves, although White would still be winning after 28.Qb7.

28. Rh8+ Kf7 29. Qh7+ Ke8 30. Rxf8+  
Kxf8 31. Qh8+ Ke7 32. Rh7# 1-0



These two games from the Reserve Section are also instructive:

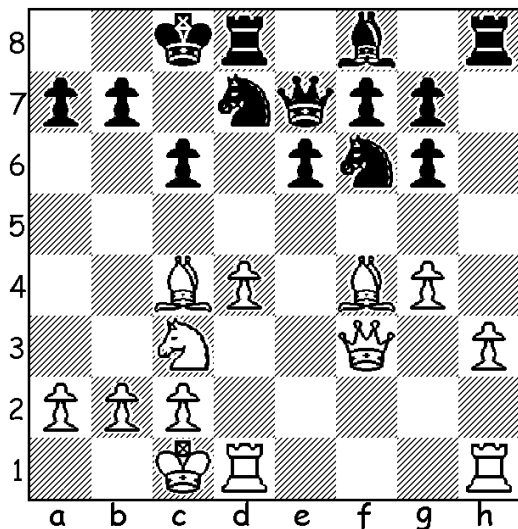
Round 3

White – Bill Quinlan

Black – Alan Neal

Comments by Dan Holmes

1. e4 c6 2. d4 d5 3. Nc3 dxe4 4. f3 exf3  
5. Nxf3 Nf6 6. Bc4 Bg4 7. Be3  
White could have played 7.Ne5 here,  
threatening 8.Bxf7# and forcing Black to  
either lose the bishop or play 7...Be6  
8.Bxe6 with a large advantage to White.  
7... e6 8. h3 Bh5 9. g4 Bg6 10. Ne5  
Nbd7 11. Nxc6 hxg6 12. Qf3 Qe7 13.  
O-O-O O-O-O 14. Bf4 (see diagram)



Threatens 15.Qxc6!! bxc6 16.Ba6#.  
14... Nb6 15. Bb3 Nfd5 16. Nxd5 Nxd5  
17. Bg3 Qf6 18. Bxd5 Rxd5 19. Qe3  
Bb4 20. a3 Ba5 21. c4 Rd7 22. d5 Bc7  
23. d6 Bb6 24. c5 Bd8 25. h4 Re8??  
Black had to play 25...e5 here, although  
White would have more than enough  
compensation for the pawn. Now the  
Black queen finds herself trapped.  
26. Be5 1-0

The following game showcases the winner of the Reserve section.

White – Dan Holmes

Black – Will Teague

Comments by Dan Holmes

1. e4 c5 2. Nf3 d6 3. d4 cxd4 4. Nxd4  
Nf6 5. Nc3 a6 6. Be2 e5 7. Nb3 h6  
7...Be7 is more common here.  
8. Be3 Be6 9. Nd5 Nbd7 10. f3 Rc8 11.  
c4 Be7 12. Qd2 Bxd5 13. cxd5 Nc5  
14. Qb4  
Shredder likes Nxc5 followed by  
castling better.  
14... Nxb3 15. Qxb3 Qd7 16. O-O O-O  
17. Rfc1?!  
Moving the other rook would have been  
better.  
17... Nh7  
If the rook still stood on f1, it could  
support a pawn break with f4 and  
discourage ...f5 because of the threat of  
discovered check along the a2-g8  
diagonal.  
18. a4 Bg5 19. a5 Bxe3+ 20. Qxe3 f5 21.  
exf5 Qxf5 22. Qb6 Qd7 23. Qe3 Nf6  
24. Bc4 Rc5 25. Qd3 Rfc8 26. b4 R5c7  
27. Qf1?  
27.Rc3! would have held the balance.  
27... Kh8 28. Bb3 Rc3! 29. Rxc3 Rxc3  
30. Bc4?  
30. Rb1 would have offered more hope.  
30... Qc7 31. Rc1 Rxc1 32. Qxc1 Nxd5  
33. Qc2??  
I had intended to sacrifice my e-pawn,  
hoping to counterattack with  
Qf5, but did not realize until it was too  
late that Black could cut off this square  
with his next move. Now, it's all over.  
33... Ne3 34. Qg6 Qxc4 0-1

## Super Bowl II

The Super Bowl II Tournament was held in Wichita, KS on January 26 and 27, and was directed by Ron Pasik. Tom Brownscombe won the tournament with a 4.5/5 score. Conrad Holt took second with a 4/5 score, and Terry Wright, Jason Wawrzaszek, and Jaime Fernandez tied for third with 3.5/5 scores. A quick-rated event was also held, cleverly called the Halftime Quick. Tom Brownscombe, Conrad Holt, and Terry Wright tied for first with 3/4 scores, and Jason Wawrzaszek scored 2.5/4. Eight players participated in this event.

## Super Bowl II

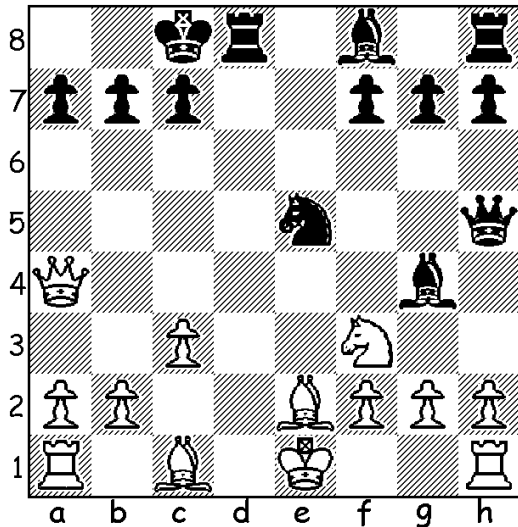
1	TOM BROWNSCOMBE	2215	->2218	4.5	W	5	W	11	W	2	D	3	W	7
2	CONRAD HOLT	2053	->2059	4.0	W	8	W	6	L	1	W	7	W	3
3	TERRY WRIGHT	1738	->1789	3.5	W	15	W	4	W	17	D	1	L	2
4	JASON WAWRZASZEK	1792	->1789	3.5	D	13	L	3	W	18	W	11	W	8
5	JAIME FERNANDEZ	1758	->1773	3.5	L	1	W	14	W	6	H		W	9
6	SATORU KISHI	1746	->1733	3.0	W	16	L	2	L	5	W	13	W	15
7	JOHN SCHULLER	1870	->1869	2.5	W	18	W	12	H		L	2	L	1
8	NICK SHEARER	1600	->1611	2.5	L	2	W	13	W	11	D	9	L	4
9	SAM UN	1421	->1458	2.5	L	11	W	16	W	12	D	8	L	5
10	RON PASIK	1792	->1804	2.0	U		U		U		W	16	W	11
11	DORIAN SHEVITZ	1822	->1782	2.0	W	9	L	1	L	8	L	4	L	10
12	ANTHONY WINN	1741	->1717	2.0	W	14	L	7	L	9	W	18	U	
13	KENT WILLIAMS	1278	->1285	2.0	D	4	L	8	W	14	L	6	D	16
14	LYLE TAYLOR	1220	->1193	1.5	L	12	L	5	L	13	D	15	B	
15	RAY WINGER	unr	->1116	1.5	L	3	L	18	W	16	D	14	L	6
16	MATT RHOADS	550	->579	1.5	L	6	L	9	L	15	L	16	D	13
17	NEIL ANDREWS	1834	->1820	1.0	H		H		L	3	U		U	
18	DUANE TATE SR	1433	->1425	1.0	L	7	W	15	L	4	L	12	F	

## Super Bowl Halftime Quick (note: ratings shown are Quick Ratings)

1	TOM BROWNSCOMBE	2124	->2111	3.0	L	3	W	5	W	7	W	6	
2	TERRY WRIGHT	1708	->1718	3.0	W	5	L	4	W	6	W	3	
3	CONRAD HOLT	1645	->1702	3.0	W	1	W	6	W	4	L	2	
4	JASON WAWRZASZEK	1629	->1641	2.5	W	7	W	2	L	3	D	8	
5	SAM N UN	1418	->1476	2.0	L	2	L	1	W	8	W	7	
6	RAY WINGER	unr	->1537	1.0	W	8	L	3	L	2	L	1	
7	SATORU KISHI	1441	->1442	1.0	L	4	W	8	L	1	L	5	
8	RON PASIK	1664	->1603	0.5	L	6	L	7	L	5	D	4	

Super Bowl II round 1  
 White – Sam Un  
 Black – Dorian Shevitz

1. e4 d5 2. exd5 Nf6 3. Nc3 Nxd5 4.  
 Nxd5 Qxd5 5. Nf3 Nc6 6. d4 Bg4 7. Be2  
 O-O-O 8. c3 Qh5 9. Qa4 e5 10. dxe5  
 Nxe5 (see diagram) 11. Ng1  
 According to Ron Pasik, 11.Qxa7 Nxf3+  
 12.Bxf3 Bxf3 13.gxf3 Qxf3 14.Qa8+  
 Kd7 15.Qa4+, etc. would have been  
 even. 11... Bxe2 12. Nxe2 Nd3+ 13.  
 Kf1 Bc5 14. Ng3 Qe5 15. Qe4 Qxe4 16.  
 Nxe4 Rhe8 17. Bg5 Rxe4 18. Bxd8  
 Nxf2 19.Rg1 Kxd8 20. g3 Ng4 21. Rg2  
 Ne3+  
 0-1



Round 3  
 White – Nick Shearer  
 Black – Dorian Shevitz  
 Comments by Nick Shearer.

1. d4 d5 2. c4 e6 3. Bf4 c6 4. e3 f5  
 Black has a defensive stonewall, but  
 White's queen bishop is developed  
 outside his pawn formation.  
 5. Nd2 Nf6 6. Ngf3 Be7 7. Be2 Nbd7  
 8.Ng5 Nf8 9. Be5 h6  
 He had to do this, even though it  
 weakens his h5-e8 diagonal.  
 10. Nh3 Bd6 11. Nf4 g6 12. Bxd6 Qxd6  
 13. c5 Qc7 14. b4 a6 15. O-O Kf7 16. a4  
 N8d7

Right away 16...e5 is better.  
 17. Nd3 e5 18. f4 e4 19. Ne5+ Nxe5 20.  
 fxe5 Nd7 21. Nb3 Kg7 22. Qd2 Rf8  
 I would have preferred 22...Nf8,  
 heading for e6.

23. b5 g5  
 Black should develop his pieces first.  
 24. bxa6 bxa6 25. Qa5 Qa7 26. g3 Kg6  
 27. Rab1 Rb8 28. Qd2 Bb7 29. Na5 Ba8  
 30. Qc2 Rxb1 31. Rxb1 f4?

This opens up the kingside, which  
 White's pieces are better able to exploit.  
 Instead 31...Rb8 is good.  
 32. gxf4 gxf4 33. exf4 Rxf4 34. Rf1  
 Rf8?

The simple Rxf1+ is best.  
 35. Qd1!

And Black's king is in trouble.  
 If now 35...Rxf1 36.Qxf1 Nxe5 37.dxe5  
 Qxc5+ 38.Kh1 Qxa5 39.Qf6+ Kh7  
 40.Qf7+ Kh8 41.e6 and White wins.  
 35...Rg8 36. Kh1 Nxe5 37. Bh5+ Kh7  
 38. dxe5 Qxc5 39. f7+ Kh8 40. Qf1 Rg7  
 41. Rf8+ Qxf8 42. Qxf8+ Rg8 43.  
 Qxh6# 1-0

## Lindsborg Tornado

The Lindsborg Tornado on April 26, 2008 attracted 12 players. John Pritchard won the tournament with a perfect 4/4 score, while Wesley Koehler and John Schuller tied for second with 3/4. Tom Brownscombe directed the tournament.

1	JOHN PRITCHARD	1633	->1719	4.0	W	9	W	2	W	3	W	5
2	WESLEY KOEHLER	2265	->2251	3.0	W	7	L	1	W	4	W	6
3	JOHN SCHULLER	1869	->1855	3.0	W	10	W	5	L	1	W	8
4	PETER RUPPRECHT	1605	->1607	2.5	W	11	W	6	L	2	H	
5	MICAH LABRAYERE	unr	->1328	2.0	W	12	L	3	W	7	L	1
6	KYLE BURRIS	1170	->1178	2.0	W	8	L	4	W	9	L	2
7	ANDREW RITTER	943	->953	2.0	L	2	W	11	L	5	W	9
8	CLAUDIA RITTER	unr	->923	2.0	L	6	W	12	W	10	L	3
9	ALEX MUCI	697	->727	1.0	L	1	W	10	L	6	L	7
10	ALEXANDER NATHAN	unr	->579	1.0	L	3	L	9	L	8	W	11
11	EDGAR BAEZ	unr	->445	1.0	L	4	L	7	W	12	L	10
12	WILLIAM BRIAN	unr	->101	1.0	L	5	L	8	L	11	B	

### Lindsborg Tornado Round 4

White – Wesley Koehler

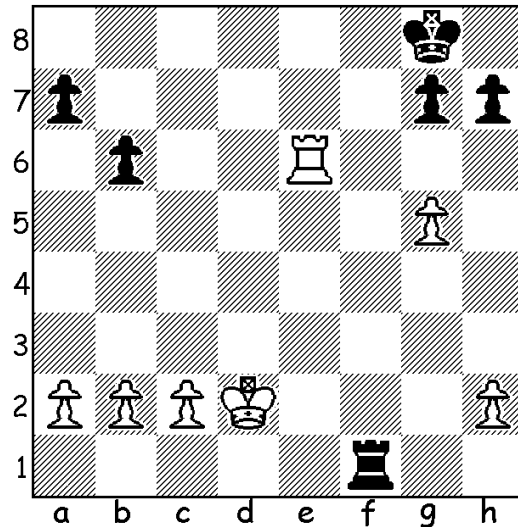
Black – Kyle Burris

Comments by Dan Holmes

1. e4 e6 2. d4 d5 3. Nc3 Nf6 4. Bg5 dxe4  
 5. Nxe4 Be7 6. Bxf6 Bxf6 7. Nf3  
 Nd7 8. Qd2 b6 9. Nxf6+ Nxf6 10. Bb5+  
 Bd7 11. Bd3 O-O 12. Ne5 Bc8  
 13. O-O-O Bb7 14. Rhg1 Qe7 15. g4 c5  
 16. g5 Ne4 17. Qf4 f6 18. Bxe4 fxe5 19.  
 Qxe5 Bxe4 20. Qxe4 Rad8 21. f4 cxd4  
 22. Rxd4 Rxd4 23. Qxd4 Qf7 24. Re1  
 Qxf4+ 25. Qxf4 Rxf4 26. Rxe6 Rf1+ 27.  
 Kd2 (see diagram) Rf2+ 28. Re2  
 28... Rxe2+

Rook endgames can often be more drawish than other endgames, so since Black is down a pawn, he should keep the rooks on the board and keep his rook active with 28...Rf5!, when White would have plenty of work left to do.  
 29. Kxe2 Kf7 30. Ke3 Ke6

31. Ke4 g6 32. c4 Kd6 33. b4 Ke6 34. c5  
 bxc5 35. bxc5 a6 36. a3 a5 37. a4  
 Ke7 38. Kd5 Kd7 39. c6+ Kc7 40. Kc5  
 Zugzwang!  
 40...Kc8 41. Kd6 Kd8 42. c7+ 1-0





## Emporia Open

The 2007 Emporia Open was held on December 1 and 2, 2007 in Emporia, and attracted 21 players. For the second year in a row, C.J. Armenta directed the tournament, which was won by Tom Brownscombe and Kyle Camarda, both of whom scored 4/5. Joe Delay of Illinois also scored 4/5, but was not eligible for prizes because he took a bye in the fifth round. Will Teague was the highest scoring scholastic player with 3.5/5, and Tony Dutiel also scored 3.5/5 to win the third place money prize.

1	TOM BROWNSCOMBE	2200	->2200	4.0	W	13	W	6	W	4	L	2	W	9
2	KYLE CAMARDA	1878	->1890	4.0	W	14	W	10	D	3	W	1	D	4
3	JOE DELAY	1645	->1663	4.0	W	11	W	17	D	2	W	5	H	
4	TONY DUTIEL	1769	->1776	3.5	W	8	W	7	L	1	X		D	2
5	WILL TEAGUE	1422	->1465	3.5	W	19	W	9	H		L	3	W	13
6	ALAN NEAL	1589	->1597	3.0	W	15	L	1	H		W	10	D	7
7	JAMES ABER	1436	->1454	3.0	W	18	L	4	W	8	D	9	D	6
8	LYLE TAYLOR	1210	->1220	3.0	L	4	W	18	L	7	W	16	W	15
9	DAN HOLMES	1614	->1592	2.5	W	16	L	5	W	13	D	7	L	1
10	LAURENCE COKER	1549	->1533	2.5	W	20	L	2	H		L	6	W	17
11	LEROY ASHER	1071	->1072	2.5	L	3	L	12	W	16	D	20	W	19
12	RALPH BOWMAN	1500	->1500	2.0	L	17	W	11	L	14	L	15	W	20
13	MICHAEL CLARADY	1343	->1333	2.0	L	1	W	15	L	9	W	17	L	5
14	JIMMY HUGGINS	1276	->1325	2.0	L	2	W	20	W	12	F		U	
15	JOHN MAYHEW	1031	->1054	2.0	L	6	L	13	W	21	W	12	L	8
16	ROBERT HOSSFELD	916	->902	2.0	L	9	W	19	L	11	L	8	W	21
17	JASON PFORTMILLER	857	->928	1.5	W	12	L	3	H		L	13	L	10
18	CODY HUNT	697	->602	1.5	L	7	L	8	H		L	19	B	
19	BRENDAN CARTER	391	->459	1.5	L	5	L	16	H		W	18	L	11
20	DAVID MCCOY	967	->979	1.0	L	10	L	14	H		D	11	L	12
21	ANDREW SPENCER	unr	->510	1.0	U		U		L	15	B		L	16

2007 Emporia Open Round 5

White – Dan Holmes

Black – Tom Brownscombe

Notes by Dan Holmes

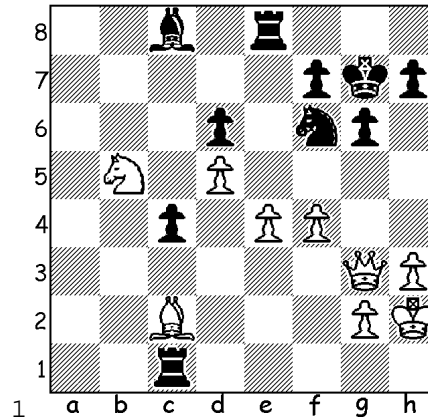
1. d4 Nf6 2. c4 e6 3. Nf3 c5 4. d5 exd5  
5. cxd5 d6 6. e4 g6 7. Nc3 Bg7 8. Bc4  
O-O 9. O-O Re8 10. Re1 Nbd7 11. Rb1  
a6 12. b4?!

Trying to gain control of the queenside  
fails because Black gets in first.

12...b5! 13. Bd3 c4 14. Bc2 Ng4 15.  
Bb2 Nde5 16. h3 Nxf3+ 17. Qxf3 Ne5  
18. Qg3 Qb6 19. Ne2 a5 20. Bd4 Qb8  
21. f4 Nd7 22. Bxg7 Kxg7 23. bxa5  
Qa7+ 24. Kh1 Qxa5 25. Nd4 Nf6 26.  
Nxb5 Qxa2 27. Ra1 Qxa1 28. Rxa1  
Rxa1+ 29. Kh2 Rc1 (see diagram)  
30. Qc3?

With 30.Qf2!, White would have  
tactically defended his e-pawn,  
restrained Black's c-pawn, and prepared  
to advance his central pawns.

30...Rxe4 31. Nxd6 Re2 32. Nxc8  
Rcxc2 33. Qa5 Rxc2+ 34. Kh1 Nh5  
35. Qa1+ c3 0-1

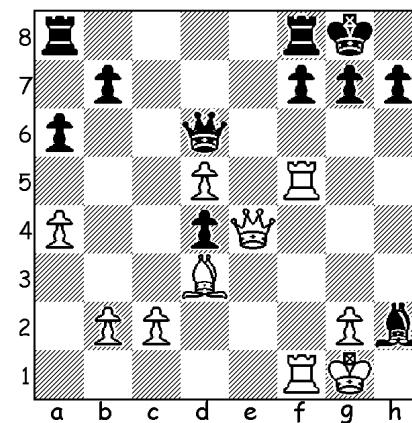


Round 4

White – Tom Brownscombe

Black – Kyle Camarda

1. e4 c5 2. Nf3 d6 3. d4 cxd4 4. Nxd4  
Nf6 5. Nc3 a6 6. a4 e6 7. Be2 Be7 8.  
Be3 Nc6 9. O-O O-O 10. f4 e5 11. fxe5  
dxe5 12. Nf5 Bxf5 13. Rxf5 Qc7 14.  
Nd5 Nxd5 15. exd5 Nd4 16. Bxd4 exd4  
17. Bd3 Qd6 18. Qg4 Bf6 19. Raf1 Be5  
20. Qe4 Bxh2+ (see diagram) 21. Kh1  
Qh6 22. Qg4 g6 23. R1f3 Bg3+ 24. Kg1  
Qh2+ 25. Kf1 Qh1+ 26. Ke2 Qe1# 0-1



# 8<sup>th</sup> Annual Lindsborg Open

December 20<sup>th</sup> at the Anatoly Karpov International School of Chess  
106 S. Main St.; Lindsborg, KS 67456

- Format: 5 round Swiss system chess tournament
- Schedule: rounds start at 9AM, 11:30 AM, 2PM, 4:30 PM, and 7PM
- Time control: game in 60 minutes
- Cash prizes: \$150 for 1<sup>st</sup> place, \$100 for 2<sup>nd</sup> place, \$50 for 3<sup>rd</sup> place  
\$100 top under 1800, \$50 2<sup>nd</sup> under 1800  
\$100 top under 1500, \$50 2<sup>nd</sup> under 1500  
\$100 top under 1200, \$50 2<sup>nd</sup> under 1200  
All cash prizes are based upon 30 cash prize entries. Cash prizes will be raised or lowered in proportion with the number of cash prize entries.
- Trophies: trophies to 1<sup>st</sup>, 2<sup>nd</sup>, and 3<sup>rd</sup> place overall  
1<sup>st</sup> and 2<sup>nd</sup> place under 1600  
1<sup>st</sup> and 2<sup>nd</sup> place under 1300  
1<sup>st</sup> and 2<sup>nd</sup> place under 1000  
1<sup>st</sup> and 2<sup>nd</sup> unrated  
top female player
- Entry fee: \$15 in advance if playing only for trophies  
\$35 in advance if playing only for cash prizes  
\$45 in advance if playing for both trophies and cash prizes  
Advance entries should be received or postmarked by December 13<sup>th</sup>  
Mail advance entries to:  
Lindsborg Open entries  
Karpov Chess School  
106 S. Main St.  
Lindsborg, KS 67456
- Registration: on-site registration available from 8AM-8:30AM December 15<sup>th</sup>  
all entry fees are \$10 more per player on the day of the tournament
- Memberships: US Chess Federation(USCF) and Kansas Chess Association (KCA) membership is required for all players (other state memberships accepted for non-Kansas residents). Memberships can be purchased during registration.
- Byes: half point byes available for any round if requested before the start of round 2  
No player may request more than 2 half point byes.
- Info: brownscombe@anatolykarpovchessschool.org or  
www.anatolykarpovchessschool.org

---

## Lindsborg Open Advance Registration Form

---

Name \_\_\_\_\_ USCF ID # \_\_\_\_\_  
entry fee: \$15 trophies only \_\_\_ \$35 cash prizes only \_\_\_ \$45 trophies and cash prizes \_\_\_  
USCF membership fee: \_\_\_ KCA membership fee: \$5 junior \_\_\_ \$7 adult \_\_\_ total: \_\_\_\_\_  
circle round(s) if requesting bye(s): 1 2 3 4 5  
e-mail: \_\_\_\_\_