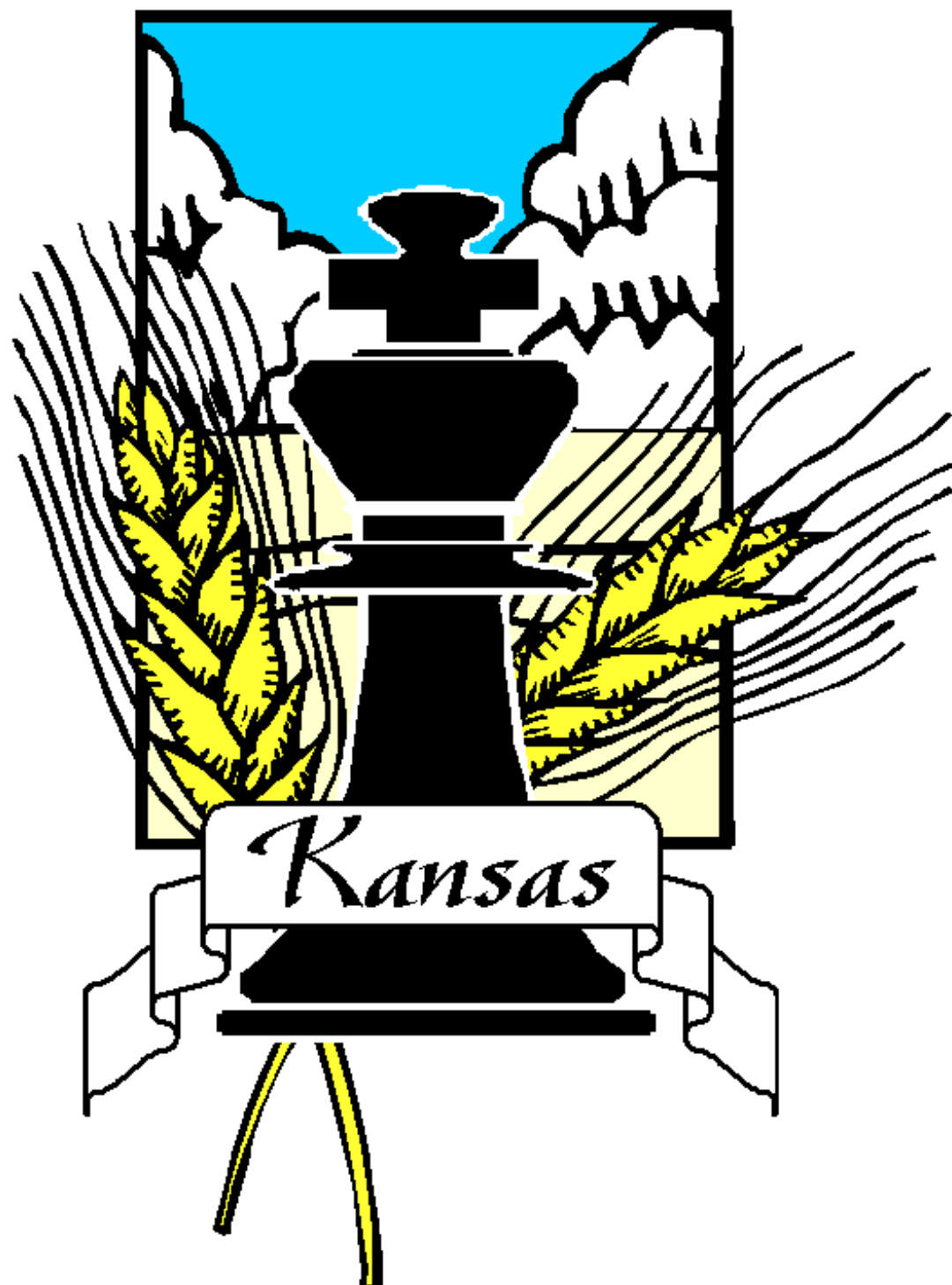


Plains Chess

Fall 2007



*The official quarterly publication of the
Kansas Chess Association*

Contents

The 7 th Annual Lindsborg Open	2
Superbowl II Chess Tournament	3
Crosstables	4
Kansas Open Report	8
Summer Chess Camp	9
Featured Game	10
Games from the Kansas Open	12
Games from the Temple Emmanu-el Open	18

Editor: Tom Brownscombe

Contributors

Laurence Coker
Cynthia Hawkinson
Kevin Nyberg
Ron Pasik
Brian Wall

The editor would like to thank everyone who contributed to this magazine. Without contributions, there would be no Plains Chess. Contributions to future issues should be sent to brownscombe@anatolykarpovchessschool.org as an e-mail attachment in word format.

Mark your calendars:

The 2008 Kansas Open will be held July 19th and 20th at Bethany College in Lindsborg, between the two sessions of the Karpov Chess School Summer Chess Camp.

Come to Social Chess every 1st and 3rd Thursday of every month at the Anatoly Karpov Chess School in Lindsborg.

7th Annual Lindsborg Open

December 15th at the Anatoly Karpov International Chess School
106 S. Main St.; Lindsborg, KS 67456

- Format: 5 round swiss system chess tournament
Schedule: rounds start at 9AM, 11:30 AM, 2PM, 4:30 PM, and 7PM
Time control: game in 60 minutes
Cash prizes: \$150 for 1st place, \$100 for 2nd place, \$50 for 3rd place
\$100 top under 1800, \$50 2nd under 1800
\$100 top under 1500, \$50 2nd under 1500
\$100 top under 1200, \$50 2nd under 1200
All cash prizes are based upon 30 cash prize entries. Cash prizes will be raised or lowered in proportion with the number of cash prize entries.
Trophies: trophies to 1st, 2nd, and 3rd place overall
1st and 2nd place under 1600
1st and 2nd place under 1300
1st and 2nd place under 1000
1st and 2nd unrated
top female player
Entry fee: \$15 in advance if playing only for trophies
\$35 in advance if playing only for cash prizes
\$45 in advance if playing for both trophies and cash prizes
advance entries should be received or postmarked by December 8th
mail advance entries to:
Lindsborg Open entries
Karpov Chess School
106 S. Main St.
Lindsborg, KS 67456
Registration: on-site registration available from 8AM-8:30AM December 15th
all entry fees are \$10 more per player on the day of the tournament
Memberships: US Chess Federation(USCF) and Kansas Chess Association (KCA) membership is required for all players (other state memberships accepted for non-Kansas residents). Memberships can be purchased during registration.
Byes: half point byes available for any round if requested before the start of round 2
No player may request more than 2 half point byes.

Advance Registration Form

Name _____ USCF ID # _____
entry fee: \$15 trophies only ___ \$35 cash prizes only ___ \$45 trophies and cash prizes ___
USCF membership fee: ___ KCA membership fee: \$5 junior ___ \$7 adult ___ total: _____
circle round(s) if requesting bye(s): 1 2 3 4 5 e-mail: _____

Super Bowl II Chess Tournament:

When: January 26 & 27, 2008

Where: Holiday Inn Select, 549 S Rock Rd, Wichita, KS (SW corner of Rock and Kellogg, 1 mile W of Exit 50 of I-35 or KS Turnpike)

Two Sections: Open and Reserve (1599 and below) **both** 5SS

TC: Qtrs 1-3, G/75 with 15 seconds delay or G/90, no delay 4th Qtr & OT
G/145 with 15 seconds time delay or G/120 no time delay

EF - Adults \$40 by 1/20/07 (\$50 at door), Scholastics - \$15 by 1/20/07 (\$20 at the door)

USCF and **KCA** membership required, OSA; One half-point available in rounds 1-3.

Reg: 8:00-9:15 **Quarters:** Sat: 1st 9:30, 2nd 12:45, 3rd 4:00 Sun: 4th 9:00
OT-1:30

Prizes: Open, 1st \$200 (GTD), 1900-2199, 1600-1899 both 1st-2nd per entries, Reserve 1st \$125 (GTD), 1300-1599, 1000-1299, 1st -2nd, Top 999 and below including Unrated per entries. 75% of the EF revenue is returned for prizes for over 50 entries. **HR:** Call for chess rates by 1/12/08

Reservations: 316-686-7131; **Entries:** Ron J. Pasik, 1136 Patrick Henry St, Derby, KS, 67037, Phone: 316-789-8311 **Email:** quinielabox@aol.com

Super Bowl II Half-time Quick Chess Tournament Played after round 3, Saturday January 26, 2007. 4-SS, G/15..... Rd 1 starts 15 minutes after the last game of round 3 ends. EF: \$20 adults, \$10 scholastics. 80% Adult EF revenue is returned as cash prizes.

GARDEN CITY SUMMER OPEN (June 16, 2007)

NAME (rating)	Rd1	Rd2	Rd3	Rd4	Rd5	TOTAL
1. Ralph Bowman (1508)	L2	W5	W4	W3	W6	4.0
2. Lyle Taylor (1159)	W1	W6	W5	W4	L3	4.0
3. Jairo Garcia (441)	W5	W4	W6	L1	W2	4.0
4. William Foulkrod (1047)	W6	L3	L1	L2	W5	2.0
5. Devin Blackwell (845)	L3	L1	L2	W6	L4	1.0
6. David Blackwell (unrated)	L4	L2	L3	L5	L1	0.0

KANSAS OPEN July 13th, 2007-QUICK CHAMPIONSHIP
(All entries from Kansas unless indicated)

Name and Rating	Rd1	Rd2	Rd3	Rd4	Rd5	TOTAL
1. Maxx Coleman 1980	W16	W10	W4	W6	W2	5.0
2. Brian Wall (CO) 2105	W21	W14	W19	W7	L1	4.0
3. Dan Holmes 1647	L13	W28	W17	W8	W10	4.0
4. Conrad Holt 1448	W7	W8	L1	W11	W6	4.0
5. Brandon Stich 1181	W30	L11	W20	W9	W14	4.0
6. Renard Anderson (CO) 2206	W12	W20	W11	L1	L4	3.0
7. Tom Brownscombe 2145	L4	W24	W13	L2	W16	3.0
8. Tony Dutiel 1771	W23	L4	W12	L3	W19	3.0
9. Timothy Tobiason (NE) 1562	---	W26	W21	L5	W22	3.0
10. Samuel Sexton 1513	W28	L1	W23	W19	L3	3.0
11. Duane Tate 1488	W24	W5	L6	L4	W21	3.0
12. CJ Armenta (MO) 1463	L6	W27	L8	W24	W18	3.0
13. Jimmy Huggins 1072	W3	W15	L7	L16	W20	3.0
14. Anthea Carson (CO) 1542	W29	L2	D25	W15	L5	2.5
15. Lance Gill 1554	W26	L13	D16	L14	W25	2.5
16. Duane Johnson 1212	L1	W30	D15	W13	L7	2.5
17. Randy Graber (OH) 1765	W22	L19	L3	L21	W26	2.0
18. Marvin Lee (OK) 1712	----	L23	W28	W25	L12	2.0
19. Blythe Buscher 1462	W25	W17	L2	L10	L8	2.0
20. Ralph Bowman 1523	W27	L6	L5	W23	L13	2.0
21. Laurence Coker 1367	L2	W29	L9	W17	L11	2.0

22. Charlie Arbuckle 1316	L17	L25	W27	W26	L9	2.0
23. Christopher Anton 1100	L8	W18	L10	L20	W27	2.0
24. Tom Claman 1067	L11	L7	W30	L12	W28	2.0
25. Dinko Sherlev 1450	L19	W22	D14	L18	L15	1.5
26. Zachariah Button 1093	L15	L9	W29	L22	L17	1.0
27. Andrews LeValley 744	L20	L12	L22	W30	L23	1.0
28. Ben McGregor 697	L10	L3	L18	W29	L24	1.0
29. Nathan LeValley 335	L14	L21	L26	L28	W30	1.0
30. Nick Wideman	L5	L16	L24	L27	L29	0.0

**KANSAS OPEN-July 14th and 15th, 2007-Open Section
(All Entries from Kansas unless indicated)**

Name and Rating	Rd.1	Rd2	Rd3	Rd4	Rd5	TOTAL
1. Brian Wall (CO) 2223	W16	W11	D4	D3	W6	4.0
2. Renard Anderson (CO) 2238	W7	L6	W5	D4	W9	3.5
3. Thomas Gossell (MO) 2226	W15	D5	W6	D1	D4	3.5
4. Tom Brownscombe 2200	W12	W8	D1	D2	D3	3.5
5. Conrad Holt 1785	W9	D3	L2	W13	W11	3.5
6. Francis Crow (MO) 1906	W13	W2	L3	W11	L1	3.0
7. Neil Andrews 1861	L2	L12	W15	W10	W13	3.0
8. Judson Temple (OK) 1800	W14	L4	L9	W17	W16	3.0
9. Fred Galvan 2041	L5	W15	W8	-b-	L2	2.5
10. Charles Davis 1819	L11	W16	-b-	L7	W12	2.5
11. Maxx Coleman 2132	W10	L1	W12	L6	L5	2.0
12. Jason Wawrzaszek 1833	L4	W7	L11	W16	L10	2.0
13. Jaime Fernandez 1765	L6	-B-	W17	L5	L7	2.0
14. George Trammell (OK) 2050	L8	W17	---	---	---	1.0
15. Erik Dupuis 1838	L3	L9	L7	-B-	---	1.0
16. Marvin Lee (OK) 1821	L1	L10	-B-	L12	L8	1.0
17. Ron Pasik 1754	-b-	L14	L13	L8	---	0.5

**KANSAS OPEN July 14th and 15th, 2007- Reserve Section
(All entries from Kansas unless indicated)**

Name and Rating	Rd1	Rd2	Rd3	Rd4	Rd5	TOTAL
1. Anthea Carson (CO) 1661	W32	W30	W15	W12	W8	5.0
2. Tom Phillips 1727	L27	W39	W32	W30	W16	4.0
3. Adrian Rolfe (IA) 1609	W38	W17	W22	L5	W12	4.0
4. John Pritchard 1517	W46	W41	D8	W20	D5	4.0
5. Dan Holmes 1515	W37	W42	D10	W3	D4	4.0
6. Jimmy Huggins 1072	D21	D26	W31	W15	W14	4.0
7. Randy Graber (OH) 1738	L18	W44	D23	W29	W22	3.5
8. Mike Van Deelen 1629	W19	W24	D4	W10	L1	3.5
9. Blythe Buscher 1605	W44	W18	L12	D17	W25	3.5

10. Duane Tate 1583	W36	W25	D5	L8	W23	3.5
11. Cory Lafflin 1334	L12	D37	W50	W35	W21	3.5
12. Tony Dutiel 1786	W11	W16	W9	L1	L3	3.0
13. Howard Notgarnie (CO) 1637	W34	D23	D20	D22	-b-	3.0
14. Samuel Sexton 1633	W35	L22	W18	W24	L6	3.0
15. Victor Graham 1602	W39	W27	L1	L6	W32	3.0
16. Isaiah Jesch 1554	W45	L12	W27	W26	L2	3.0
17. Charlie Arbuckle 1448	W48	L3	W33	D9	D20	3.0
18. Webb Miller (MO) 1311	W7	L9	L14	W42	W34	3.0
19. Tom Martin 1215	L8	W47	L26	W33	W30	3.0
20. Vladimir Iglesias 1718	D29	W50	D13	L4	D17	2.5
21. Laurence Coker 1617	D6	W29	-b-	D23	L11	2.5
22. Ed Mefford 1500	W47	W14	L3	D13	L7	2.5
23. Michael Harvey (OK) 1491	W43	D13	D7	D21	L10	2.5
24. CJ Armenta (MO) 1476	W49	L8	W36	L14	D27	2.5
25. Robert Tobias 1423	W33	L10	D35	W43	L9	2.5
26. Dinko Skerlev 1450	D50	D6	W19	L16	D28	2.5
27. Michael Clarady 1307	W2	L15	L16	X46	D24	2.5
28. Zachariah Button 1280	L41	W46	L30	W36	D26	2.5
29. Duane Johnson 1242	D20	L21	W37	L7	W40	2.5
30. Ralph Bowman 1500	W40	L1	W28	L2	L19	2.0
31. Lyle Taylor 1359	L42	W45	L6	L40	W43	2.0
32. Kent Williams 1290	L1	W40	L2	W47	L15	2.0
33. Yury Markushin 1335	L25	W38	L17	L19	W45	2.0
34. Dexter Solomon 1260	L13	L43	W45	W48	L18	2.0
35. Benjamin Gallman 1188	L14	W48	D25	L11	D37	2.0
36. Brandon Stich 1196	L10	W49	L24	L28	W46	2.0
37. Joanna Gossell (MO) 1131	L5	D11	L29	W50	D35	2.0
38. Thomas Claman 1126	L3	L33	L40	W49	W47	2.0
39. Leroy Asher 1083	L15	L2	L47	W44	X48	2.0
40. Nymishia Rao 839	L30	L32	W38	W31	L29	2.0
41. Lance Gill 1651	W28	L4	-b-	---	---	1.5
42. Robert Vaughn (IA) 1583	W31	L5	-b-	L18	---	1.5
43. Floyd Geasland 802	L23	W34	-b-	L25	L31	1.5
44. John Gallman 1125	L9	L7	L46	L39	W50	1.0
45. Christopher Anton 1035	L16	L31	L34	-B-	L33	1.0
46. Alexa Zolman 899	L4	L28	W44	F27	L36	1.0
47. Namana Rao 836	L22	L19	W39	L32	L38	1.0
48. Nick Wideman 0000	L17	L35	-B-	L34	F39	1.0
49. Eric Vaughn (NC) 795	L24	L36	-b-	L38	----	0.5
50. Ben McGregor 662	D26	L20	L11	L37	L44	0.5

4th Annual TEMPLE EMANU-EL OPEN

Wichita, KS

08/05/2007

Player	Rate	Rd1	Rd2	Rd3	Rd4	TOTAL	
1. Jason Wawrzasek	1831	W9	W5	W4	D2	3.5	
2. Tom Brownscombe	2202	D6	W9	W8	D1	3.0	
3. Daniel Gollub	1921	L5	D6	W7	W8	2.5	
4. Ron Pasik		1755	W10	W8	L1	D5	2.5
5. Kenny Lin (OK)	1447	W3	L1	W6	D4	2.5	
6. John Pritchard	1602	D2	D3	L5	W10	2.0	
7. Dinko Skerlev	1401	L8	W10	L2	W9	2.0	
8. John Schuller	1896	W7	L4	L2	L3	1.0	
9. Thomas Claman	1091	L1	L2	W10	L7	1.0	
10. Charles Gorry II	unr	L4	L7	L9	L6	0.0	

Garden City Fall Open

Garden City, KS

10/13/2007

Player	Rate	Rd1	Rd2	Rd3	Rd4	Rd5	TOTAL
1. Brian Coleman	1595	W2	W4	W3	W6	W5	5.0
2. Lyle Taylor	1305	L1	W6	L4	W5	W3	3.0
3. Ignacio Aparicio	unr	W6	D5	L1	W4	L2	2.5
4. Harold Orr	845	D5	L1	W2	L3	W6	2.5
5. Floyd Geasland	869	D4	D3	W6	L2	L1	2.5
6. David Blackwell	767	L3	L2	L5	L1	L4	0.0

4TH KATY OPEN

November 3rd and 4th, 2007

PLAYER	RAT.	RD1	RD2	RD3	RD4	RD5	TOTAL
1. Conrad Holt	2009	W11	W9	W13	W7	W2	5.0
2. Duane Tate	1580	W22	W20	W4	W13	L1	4.0
3. CJ Armenta (MO)	1456	W16	W6	L7	W8	W10	4.0
4. Jason Wawrzasek	1828	W8	W10	L2	D5	W7	3.5
5. Chris Talbot (MO)	1430	W18	L13	W21	D4	W11	3.5
6. Ron Pasik	1811	-B-	L3	W20	U	W15	3.0
7. Robert Talbot (MO)	1612	W12	W19	W3	L1	L4	3.0

8. Brandon Stich	1160	L4	W17	W9	L3	W16	3.0	
9. Ralph Bowman	1500	W15	L1	L8	D16	W14	2.5	
10. James Aber		1458	W17	L4	D11	W14	L3	2.5
11. Pavan Kota	1215	L1	W15	D10	W12	L5	2.5	
12. Alex Moser	1064	L7	D16	W22	L11	W20	2.5	
13. Samuel Sexton	1607	W14	W5	L1	L2	U	2.0	
14. David King (MO)	1047	L13	W18	W19	L10	L9	2.0	
15. Ryan Hizey	1016	L9	L11	W18	W20	L6	2.0	
16. Kyle Burris	892	L3	D12	W17	D9	L8	2.0	
17. Chris Coomes	933	L10	L8	L16	W21	W22	2.0	
18. Danielle Jacobs	798	L5	L14	L15	W22	W21	2.0	
19. Jimmy Huggins	1322	W21	L7	L14	U	U	1.0	
20. Lyle Taylor	1277	X23	L2	L6	L15	L12	1.0	
21. Alex Mansfield	561	L19	W22	L5	L17	L18	1.0	
22. Robert Hossfeld	1038	L2	L21	L12	L18	L17	0.0	
23. Dena McCoy	428	F20	U	U	U	U	0.0	

2007 KANSAS OPEN CHESS TOURNAMENT REPORT

The 2007 Kansas Open was held July 13th to 15th in Lindsborg, Kansas. The Quick tournament was held July 13th at the Karpov Chess School and the Open and Reserve Tournaments were held in the Bethany College Library Building. There were 30 participants in the Quick tournament and 67 in the main tournament (17 in the Open section and 50 in the Reserve section). The Quick tournament consisted of 23 Kansas players, 3 Colorado players, and 1 each from Nebraska, Ohio, Missouri, and Oklahoma. The Open and Reserve consisted of 49 Kansas players and 18 from out of state (4 Colorado, 5 Oklahoma, 5 Missouri, 2 Iowa, 1 Ohio, and 1 North Carolina).

The Quick tournament was won by Maxx Coleman with a perfect score of 5 wins in 5 games. **Maxx Coleman is a repeat Kansas Quick champion**, having also won in 2006. At 4 points were Brian Wall, Dan Holmes, Conrad Holt, and Brandon Stich. The Scholastic winners were first place: Christopher Anton, second place: Charlie Arbuckle, and third place: Ben McGregor with 2 points, 2 points, and 1 point respectively.

The Open Section was won by **Brian Wall** from Colorado with 4 points out of 5. He had two draws and three wins. At 3.5 points were Renard Anderson from Colorado, Thomas Gossell from Missouri, Tom Brownscombe from Kansas, and Conrad Holt from Kansas. **Tom Brownscombe is our new Kansas State Chess Champion** on tiebreak points over Conrad Holt.

In the Reserve section the Overall winner, **Anthea Carson**, was also from Colorado with a perfect 5 points with 5 wins and no losses. Tom Phillips, Adrian Rolfe from Iowa, John Pritchard, Dan Holmes, and Jimmy Huggins all finished with 4 points out of 5. By tiebreak points, **Dan Holmes is our new Kansas Reserve champion** for 2007. The scholastic winners in this section

were Zachariah Button, Nymisha Rao, and Namana Rao with 2.5, 2.0, and 1.0 points respectively.

Thanks to tournament director Kevin Nyberg and his assistant CJ Armenta. Thanks to the Karpov Chess School and Bethany College for the use of their facilities. It should be noted that we had a number of participants in the Kansas Open who had also participated in the Karpov Chess School summer camp that ran from July 8th to the 13th, just before the Kansas Open.

Karpov Chess School Summer Chess Camp

38 chess players of all ages came from 4 different states to the Anatoly Karpov International School of Chess in Lindsborg, Kansas to participate in the annual summer chess camp. The camp began on Sunday, July 8th with a pizza party and simultaneous chess exhibition by the camp's lead instructor, **Grandmaster Yuri Shulman**. After the simul, resident campers retired to the Anna Marm dorm on the Bethany College Campus. After breakfast at Bethany College on Monday morning, campers returned to the Chess School for the first round of a five round quick tournament. The tournament was followed by instruction from Shulman and Chess School Director **Tom Brownscombe**. Campers returned to Bethany College for lunch, followed by more chess instruction. At 3PM, campers had the option to return to Bethany or go swimming. After dinner, there were a variety of (mostly) chess related activities, including a bughouse tournament, two blitz tournaments, and a movie night.

The team of **Chris Anton and Duane Tate** won the bughouse tournament. **Duane Tate** won the round robin blitz tournament, and **Roy Wedge** won the swiss blitz tournament. **Nolan Hendrickson** of Wisconsin was the surprise winner of the morning, one round per day, quick tournament. Hendrickson scored five straight upsets against Satoru Kishi, John Pritchard, Isaiah Jesch, Will Teague, and Alan Neal en route to a perfect 5-0 score. The camp concluded on Friday, July 13th with an award ceremony.

I would like to thank Yuri Shulman, Marck Cobb, Irwin "Wes" Fisk, Layton Cobb, Paul Masterson, and Roxie Sjogren for their assistance with the camp. I would also like to thank Bethany College for providing room and board for resident campers.

Next year's camp will feature two sessions. The first session will take place July 13th -18th, and the second session will take place July 20th -25th. The first camp session will include a special course for teachers and chess coaches taught by Emporia State University Professor Jim Aber and Chess School Director Tom Brownscombe. Teachers who participate in this course

will receive one continuing education credit from Emporia University. For more information, please visit <http://www.anatolykarpovchessschool.org/chesscamps.html>.

Featured Game

Kansas Open Champion Brian Wall annotates his final round victory in his own inimitable style.

2007 Kansas Open

July 15, 2007

Board 1

White - Francis Crow 1906

Black - Brian Wall 2224

The Opening - Horrible

1. e4 g6 2. d4 Bg7

Now for our consciences, the arms are fair,

When the intent of bearing them is just.

- King Henry the Fourth, Part I

(Hotspur at V, ii)

Henry IV, III,

3. Nc3 d6 4. Bg5 h6

I thank him that he cuts me from my tale,

For I profess not talking. Only this--

Let each man do his best; and here draw I

A sword whose temper I intend to stain

With the best blood that I can meet withal

In the adventure of this perilous day.

- King Henry the Fourth, Part I

(Hotspur at V, ii)

5. Bh4 c5 6. dxc5 Qa5

They come like sacrifices in their trim,

And to the fire-eyed maid of smoky war

All hot and bleeding will we offer them.

- King Henry the Fourth, Part I

(Hotspur at IV, i)

7. Bb5+ Bd7 8. Bxd7+ Nxd7 9. cxd6!! TN

Theoretical Novelty by Francis Crow

The Emperor's New Clothes -

7 times 9 Nge2 was played but Francis noted

my King was naked.

9 ... Bxc3+ 10. bxc3 Qxc3+ 11. Kf1

I don't think I broke any basic Chess

principles yet my position is wretched - my knights have no outposts, no homes. When knights have no outposts, they become cockroaches scurrying along the edge of the board.

11 ... exd6

I was trying to psych myself up -

1 - I am Kramnik

2- I am Rybka

3 - I am a 2400

GLENDOWER: I can call spirits from the vasty deep.

HOTSPUR: Why, so can I, or so can any man; But will they come when you do call for them?

Henry IV, III, i

12. Ne2! Qe5

12 ... Qc5 is better

13. f3! Qe6

to avoid 14 Bd6

14. Qd4 Ngf6!

Sick now? droop now? This sickness doth infect

The very lifeblood of our enterprise.

- King Henry the Fourth, Part I

(Hotspur at IV, i)

I had a little talk with myself since Francis Crow seemed to be playing like Kramnik and Rybka, not me. I decided Francis has problems too like Kf1, Rh1 and weak pawns on a2 and c2. I decided just to consolidate and pray his weaknesses would haunt him later. I told Francis I would have accepted a draw at any time since I was down a pawn

for nebulous compensation. Tom Brownscombe told me he considered me completely lost here and would not have agreed to a draw.

15. Rd1! O-O! 16. Qxd6! Rfe8! 17. Qxe6! Rxe6!

I calmly and cheerfully consolidate my forces as if nothing is wrong. Several chess players have told me my concentration is best when under duress.

18. Be1

I expected 18 Kf2 but Hotspur doesn't seem concerned with his h1-rook.

18 ... Ra6!

Trying to torture his weaknesses.

19. Bc3!

Threatening 20 e5 winning a piece

19 ... Nc5 20. a3 Rc8!

I was hoping to combat materialism with pressure and strong moves. Around here I noticed Anthea had won her last game, 5-0 in the under 1800 section, dressed in biblical sandals, black shorts and a white T-shirt that said-Another day, another man. Anthea had just won \$300 and I knew it would be a very long ride home if I didn't win something.

My resolve grew.

21. Bb4! Na4!

Cockroach to a4

22. Nd4 Nd7

My knights wander aimlessly like homeless panhandlers.

23. f4?

Odd - pointless weakening move to keep my knight out of e5 - Francis consistently ignores the Kf1-Rh1 duo - again 23 Kf2 was called for.

23 ... Nc3! 24. Bxc3?

Played instantly - most of my blunders are made in less than a minute. Perhaps Francis

missed 24 Bc3 Rc3 25 Nb5 Rc2 26 R:d7 Rc1+ 27 Kf2 Rh1 We both had about half an hour left here.

24... Rxc3

Around here some loudmouth yelled - " Has anyone seen where Maxx went to? "

Hotspur exploded and shouted an expletive.

I have 8 younger brothers so the outburst didn't bother me. I thought maybe my

Rybka plan of making solid moves

relentlessly and cheerfully in a bad position was getting to him. Francis was frustrated

that his winning ending seemed to be slipping away, along with \$400 plus the title

plus his time.

25. Kf2! Raxa3

25 ... Nc5! is better

26. Ne2! Rc7! 27. Rd3?

Another instant move- Crow's move technique was slipping.

27 ... Ra2!

Greatness knows itself.

- King Henry the Fourth, Part I

(Hotspur at IV, iii)

28. c3 Nc5! 29. Rd8+?

A third instantly played error. Time pressure was getting to Crow. 12 minutes left for Crow, 18 for me.

29 ... Kg7! 30. Ke3!

Best, but notice the h1-rook is still undeveloped. Materialism punished, but if Francis had brought his rook out materialism would have been rewarded; or if Francis had offered a draw a pawn up I would have taken it. Francis can't resist pawns the way I can't resist snacks and now there are plastic wrappers all over Crow's side of the lunchroom table.

30 ... Nxe4! 31. Kxe4! Rxe2+! 32. Kf3! Re2!

Francis resigns 0-1
 Francis said - I think you know how to do
 this but I was winning and next time I'll get
 you!
 HOTSPUR: O, I could prophesy,
 But that the earthy and cold hand of death
 Lies on my tongue: no, Percy, thou art dust

And food for-- <dies>
 PRINCE: For worms, brave Percy: fare thee
 well, great heart.
 Henry IV, V, iv

Games from the Kansas Open

Van Deelan, Mike – Carson, Anthea [A58]

Kansas Open (5), 14.07.2007
 1.d4 Nf6 2.c4 c5 3.d5 b5 4.cxb5 a6 5.bxa6
 Bxa6 6.f3 g6 7.Nh3 Bg7 8.e4 Bxf1 9.Rxf1
 d6 10.Kf2 Qb6 11.Kg1 Nbd7 12.Qe2 Ne5
 13.Nc3 0-0 14.Nf2 Rfb8 15.f4 Ned7 16.e5
 Ne8 17.e6 Ndf6 18.exf7+ Kxf7 19.Qe6+ Kf8
 20.Re1 Qd8 21.Nfe4 Nc7 22.Qh3 Nxe4
 23.Rxe4 Kg8 24.f5 Bd4+ 25.Kh1 Qf8
 26.Rf4 g5 27.Rg4 h6

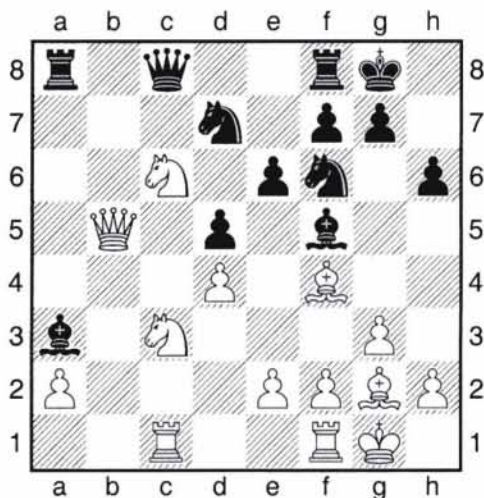


28.Bxg5 hxg5 29.Rxg5+ Bg7 30.Rf1 Rxb2
 31.Qd3 Ne8 32.h4 Ra3 33.h5 Qf6 0-1

This game between the top two junior
 players in the state features an interesting
 queen sacrifice.

Coleman, Maxx – Holt, Conrad [D11]

Kansas Open (5), 15.07.2007
 1.Nf3 d5 2.c4 c6 3.g3 Nf6 4.Bg2 Bf5 5.0-0
 e6 6.d4 Be7 7.Qb3 Qb6 8.c5 Qc7 9.Bf4
 Qc8 10.Nc3 0-0 11.Rac1 h6 12.Qa3 b5
 13.b4 a5 14.Ne5 Na6 15.Qxa5 Nxc5
 16.Qb6 Ncd7 17.Nxc6! Bxb4 18.Qxb5 Ba3



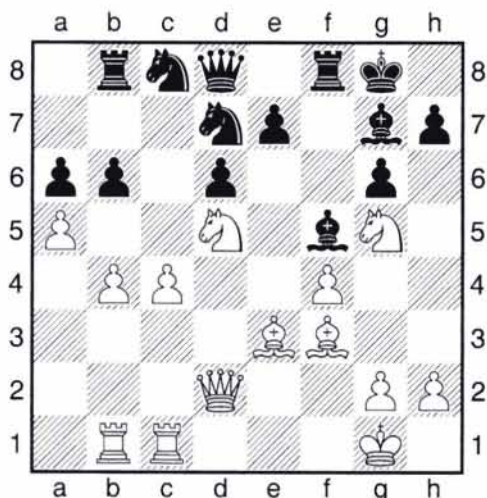
19.Nb1 Bxc1 20.Ne7+ Kh8 21.Nxc8 Bxf4
 22.gxf4 Rfxc8 23.Nd2 Rxa2 24.Nf3 Rb8
 25.Qc6 Rxe2 26.Ne5 Nxe5 27.fxg5 Ne4
 28.Bf3 Rd2 29.Bxe4 dxe4 30.Qc3 Rbb2
 31.Qa3 Re2 32.d5 e3 33.d6 Rxf2 34.Qa8+

Kh7 35.d7 Bh3 36.Rd1 Rg2+ 37.Qxg2
Rxc2+ 38.Kh1 Rg4 39.Rg1 Rd4 0-1

**Brownscombe, Tom (2200) –
Temple, Judson (1801) [B37]**

Kansas Open (2), 14.07.2007

1.e4 c5 2.Nf3 g6 3.d4 cxd4 4.Nxd4 Nc6
5.c4 Bg7 6.Nc2 Nf6 7.Nc3 0-0 8.Be2 d6
9.0-0 Be6 10.Ne3 a6 11.Ned5 Nd7 12.Be3
Nc5 13.Qd2 Qa5? [13...f5] 14.Rab1 Qd8
15.b4 Nd7 16.a4 b6 17.f4 f5 18.Bf3 Rb8
[18...Rc8] 19.Rfc1 fxe4 20.Nxe4 Na7
[20...a5] 21.a5 Nc8 22.Ng5 Bf5



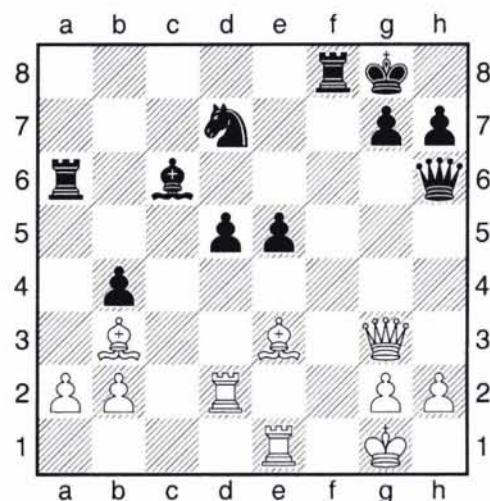
23.g4 h6 24.gxf5 hxg5 25.fxg6 e6 26.Nxb6
Ndx6 27.axb6 gxf4 28.Bxf4 Qxb6+?
[28...Qf6 29.b7±] 29.c5 Qd8 30.Bg4 Qf6
31.cxd6 e5 32.d7 Ne7 33.Bg5 Qb6+
34.Qe3 Qxe3+ 35.Bxe3 Nxc6 36.Rc8 Bf6
37.Bc5 Rd8 38.Bd6 Ra8 39.Rbc1 Nf8
40.Rxa8 Rxa8 41.Rc8 1-0

**Anderson, Renard (2272) –
Brownscombe, Tom (2200) [B87]**

Kansas Open (4), 15.07.2007

1.e4 c5 2.Nf3 e6 3.Nc3 a6 4.d4 cxd4
5.Nxd4 d6 6.Bc4 b5 7.Bb3 Nf6 8.0-0 b4
9.Na4 Be7 [9...Nxe4] 10.c3 0-0 11.f3 a5
12.Be3 Bd7 13.Rf2 Nc6 14.Nxc6 Bxc6

15.Rd2 Qb8 16.Rc1 Qb7 17.cxb4 axb4
18.Nb6 Ra6 19.Nc4 d5 20.e5 Nd7?
[20...Ne8!] 21.Nd6= Qa8 22.f4 Bxd6
23.exd6 Qb8 24.Bd4 Qxd6 25.Qg4 f6
26.Re1 e5?! 27.fxe5 fxe5 28.Qg3 Qh6
29.Be3

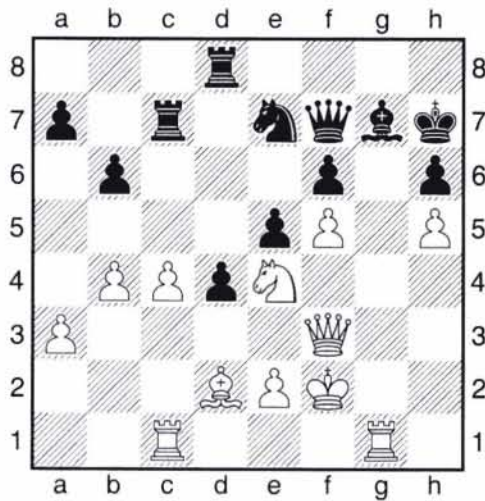


29...Qd6? [29...Qh5! 30.Bxd5+ Bxd5
31.Rxd5 Rg6!] 30.Bd4 Qh6 31.Be3 Qd6
32.Bd4 ½-½

**Crow, Francis – Anderson, Renard
[A37]**

Kansas Open (2), 14.07.2007

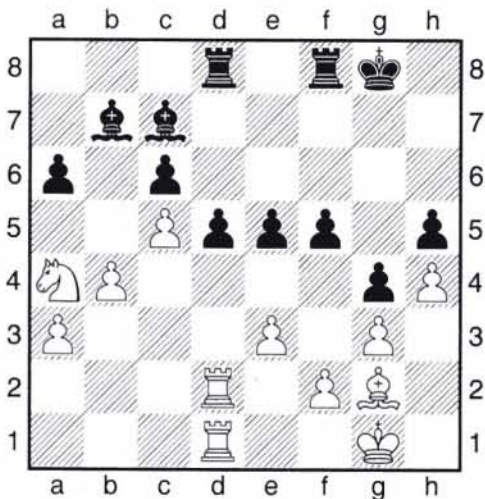
1.g3 c5 2.Bg2 g6 3.Nf3 Bg7 4.0-0 Nc6 5.d3
d6 6.c4 e5 7.Nc3 Nge7 8.h4 h6 9.Bd2 0-0
10.Kh2 Be6 11.Qc1 Kh7 12.Ne4 f6 13.Rh1
Qd7 14.Kg1 Rae8 15.a3 b6 16.b4 Nd4
17.Nxd4 cxd4 18.h5 g5 19.f4?! gxf4
20.gxf4 d5 21.Ng3 dxc4 22.f5? Bd5?
[22...Nxf5] 23.Bxd5 Qxd5 24.dxc4 Qb7
25.Qc2 Rc8 26.Qd3 Rc7 27.Kf2 Rg8
28.Rhg1 Qc6 29.Rac1 Qe8 30.Qf3 Qf7
31.Ne4 Rd8 See the diagram on the next
page. 32.Rg6! Kh8? 33.Bxh6 Nxc6
34.hxc6 Qf8 35.Bd2 Kg8 36.Qh5 Qe7
37.Qh7+ Kf8 38.Bh6 Ke8 39.Qg8+ Kd7
40.Qxg7 Qxg7 41.Bxg7 Kc8 42.Bxf6 1-0



Notgarnie, Howard - Iglesias, Vladimir [A33]

Kansas Open (3), 14.09.2007

1.Nf3 Nf6 2.c4 e6 3.g3 c5 4.Bg2 Be7 5.0-0 0-0 6.Nc3 Nc6 7.d4 cxd4 8.Nxd4 a6 9.a3 Qb6 10.e3 d6 11.Qb3 Qc7 12.Nxc6 bxc6 13.Qc2 Bb7 14.c5 d5 15.Na4 Qe5 16.Nb6 Rad8 17.Bd2 Ne4 18.b4 f5 19.Rac1 g5 20.Bc3 Nxc3 21.Qxc3 Bf6 22.Qxe5 Bxe5 23.Rc2 g4 24.Rd1 h5 25.h4 Bc7 26.Na4 e5 27.Rcd2

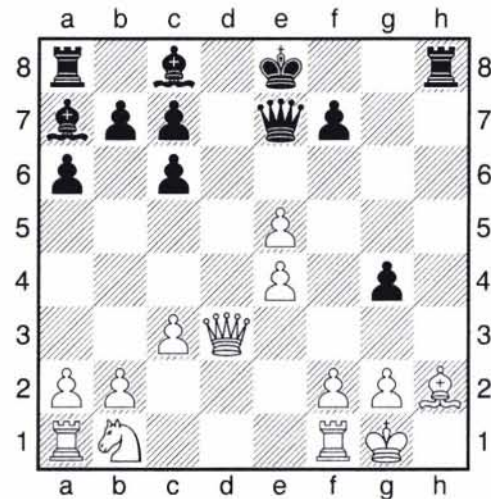


27...f4 28.exf4 exf4 29.gxf4 Rxf4 30.Nc3 Rdf8 31.Nxd5!? cxd5 32.Bxd5+ Bxd5 33.Rxd5 Rxf2 34.Rg5+ Kh7 35.Rd7+ R2f7 36.Rxh5+ Kg6 37.Rg5+ Kh6 38.Rxf7 Rxf7 39.Rxg4 Kh5 40.Re4 Rf6 41.Kg2 Rg6+ 42.Kf1 Bg3 43.a4 Bxh4 44.Rc4 Bd8 1/2-1/2

Lee, Marvin - Wall, Brian [C65]

Kansas Open (1), 14.07.2007

1.e4 e5 2.Nf3 Nc6 3.Bb5 Nf6 4.0-0 Ng4 5.c3 a6 6.Ba4 Bc5 7.d4 Ba7 8.h3 h5 9.Bxc6 dxc6 10.Nxe5 Nxe5 11.dxe5 Qe7 12.Bf4 g5 13.Bh2 g4 14.hxg4 hxg4 15.Qd3



15...Rxb2 0-1

Anderson, Renard - Andrews, Neil [B43]

Kansas Open (1), 14.07.2007

1.e4 c5 2.Nf3 e6 3.Nc3 a6 4.d4 cxd4 5.Nxd4 Qc7 6.Bd3 Nf6 7.0-0 Bc5 8.Nb3 Be7 9.f4 d6 10.Qf3 Nbd7 11.Be3 0-0 12.g4 b6 13.g5 Ne8 14.Qh5 Bb7 15.Nd4 Nc5 16.Rf3 g6 17.Qh6 f5 18.Rh3 Rf7

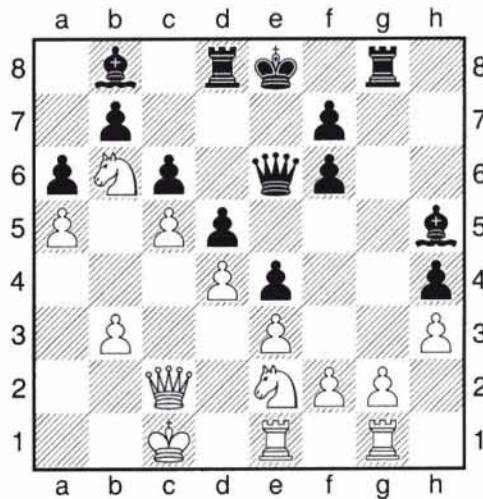


19.Nd5?! exd5 20.exf5 Bf8 21.Qh4 Nxd3?!
 [21...gxf5] 22.fxg6 Re7 23.cxd3 Bc8 24.f5
 Rg7 25.Rc1 Qb7 26.Rf1 Bxf5 27.Nxf5
 Rxc6 28.Bd4 h6 29.Rg3 Qh7 30.gxh6 Ra7
 31.Kh1 Rf7 32.Rxc6+ Qxc6 33.Rg1 Qxc6+
 34.Kxg1 1-0

Skerlev,Dinko - Jesch,Isaiah [A01]

Kansas Open (4), 15.07.2007

1.b3 Nf6 2.Bb2 d5 3.Bxf6 gxf6 4.d4 Nc6
 5.e3 Bf5 6.Bd3 Qd7 7.a3 e5 8.c3 Bd6
 9.Qc2 e4 10.Bb5 a6 11.Bxc6 Qxc6 12.Ne2
 Qd7 13.c4 c6 14.Nbc3 Rc8 15.c5 Bb8
 16.Na4 Qe6 17.Nb6 Rd8 18.a4 h5 19.a5 h4
 20.0-0-0 Bg4 21.h3 Bh5 22.Rde1 Rg8
 23.Rhg1 See the diagram at the top of the
 next column. 23...Bh2 24.Nf4 Qf5 25.Rh1
 Bxf4 26.exf4 Qxf4+ 27.Kb2 Rxc2 28.Rhf1
 Qf5 29.Re3 Bf3 30.Ka3 Qxh3 0-1

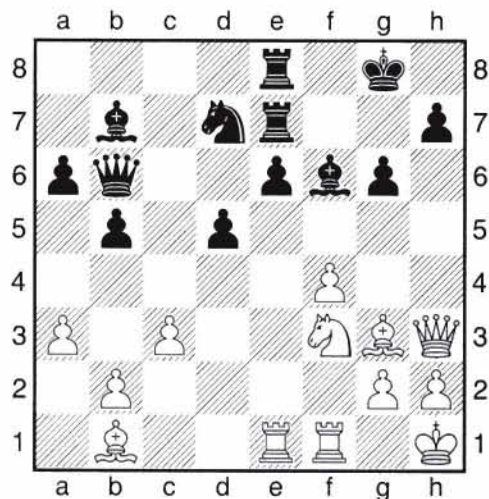


This game may have cost young Conrad Holt the state championship title.

Anderson, Renard - Holt, Conrad [C11]

Kansas Open (3), 14.07.2007

1.e4 e6 2.d4 d5 3.Nc3 Nf6 4.e5 Nfd7 5.f4
 c5 6.Nf3 Nc6 7.Be3 a6 8.Qd2 b5 9.dxc5
 Nxc5 10.Qf2 Nd7 11.Bd3 Bb7 12.0-0 Qc7
 13.Ne2 Nb4 14.Ned4 g6 15.Ng5 Nc5
 16.Rfc1 Qd7 17.Qe2 Rc8 18.a3 Nc6
 19.Ngf3 Nxd4 20.Bxd4 Bg7 21.Rf1 0-0
 22.Rad1 Qe7 23.Bf2 Rc7 24.c3 Rfc8
 25.Bh4 Qf8 26.Nd4 Re8 27.Bb1 f5 28.exf6
 Bxf6 29.Qg4 Rg7 30.Nf3 Nd7 31.Rde1 Qd6
 32.Bg3 Rge7 33.Qh3 Qb6+ 34.Bf2 Qd6
 35.Bg3 Qb6+ 36.Kh1 See the diagram on
 the next page. 36...e5? 37.fxe5 Nxe5
 38.Nxe5 Bxe5 39.Bxe5 Rxe5 40.Rxe5 Rxe5
 41.Qf3! Qd6 42.Qf7+ Kh8 43.Qxb7 Qf6
 44.Kg1 1-0



28.Rxe2 Nxc6 29.Rc2 Qa1 30.Qxa1 Bxa1
31.Rxc6 Rd8 32.Kf1 Rd3 33.Ra6 Bd4 34.b4
Rd2 35.f4 Rf2+ 36.Kg1 Rxf4+ 37.Kh1 Rf2
38.Bc6 e5 39.Bxb5 e4 40.Rd6 Bb2 41.Kg1
Rc2 42.Rd8+ Kg7 43.Re8 e3 44.Rxe3??
Bd4 0-1

**Holt, Conrad - Gossell, Thomas
[D08]**

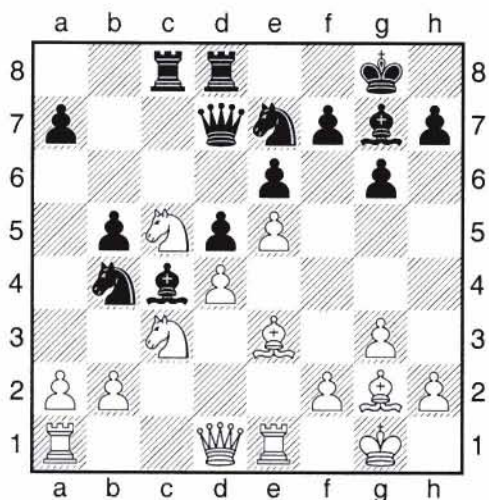
Kansas Open (2), 14.07.2007

1.d4 d5 2.c4 e5 3.dxe5 d4 4.Nf3 Nc6 5.a3
Nge7 6.g3 Ng6 7.Bg5 Qd7 8.Bg2 h6 9.Bd2
Ncx5 10.Nxe5 Nxe5 11.b3 Be7 12.0-0 0-0
13.e3 Bf6 14.exd4 Qxd4 15.Bc3 Qxd1
16.Rxd1 Bg4 17.Re1 Rfe8 18.Nd2?

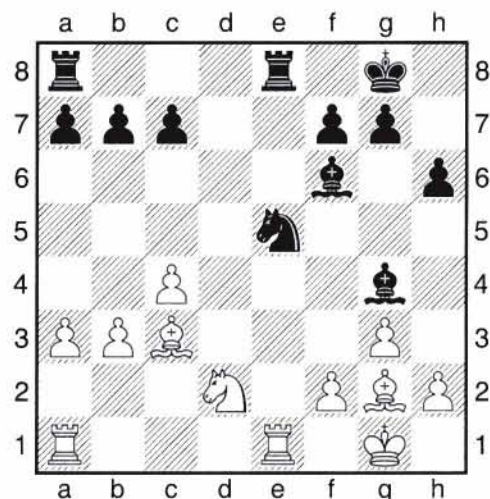
**Andrews, Neil -
Wawrzaszek, Jason [A04]**

Kansas Open (2), 14.07.2007

1.e4 c5 2.Nf3 e6 3.g3 Nc6 4.Bg2 g6 5.0-0
Bg7 6.c3 Nge7 7.d3 0-0 8.Be3 b6 9.d4
cxd4 10.cxd4 d5 11.e5 Ba6 12.Re1 Rc8
13.Nc3 Qd7 14.Qa4 Bc4 15.Nd2 b5 16.Qd1
Rfd8 17.Nb3 Nb4 18.Nc5



18...Rxc5 19.dxc5 d4 20.b3 Bd3 21.a3
dxe3 22.Rxe3? Nc2 23.Qc1 Nxa1 24.Qxa1
Qd4 25.c6 Bxe5 26.Qc1 Rc8 27.Ne2 Bxe2

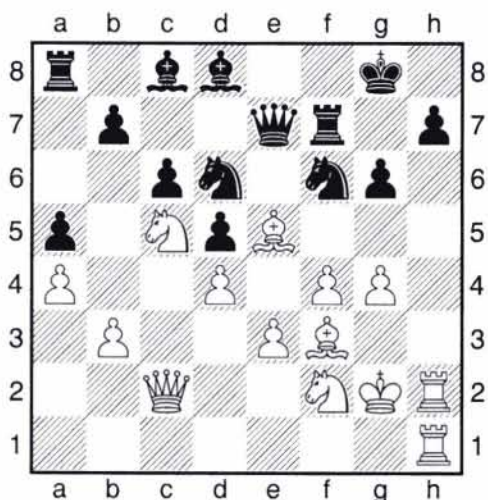


18...Nxc4 19.Bxf6 Nxd2 20.Bc3 Nxb3
21.Rxe8+ Rxe8 22.Rb1 Nc5 23.Bxb7 Rb8
24.Be4 Rb6 25.Re1 Nxe4 26.Rxe4 Bf3
27.Rb4 Rc6 28.Be1 Rc1 29.Kf1 c5 30.Rb3
Bd5 31.Rc3 Bc4+ 32.Kg2 Rxe1 33.Rxc4
Ra1 34.Ra4 c4 35.Rxa7 c3 36.Rc7 Rxa3
37.Kf3 c2+ 38.Ke2 Ra2 39.Ke3 g6 40.h4
Kg7 41.Rc6 Kf8 42.Rc7 Ke8 43.f3 Kd8
44.Rc4 Ke7 45.Kd3 Ra3+ 46.Ke2 Ra2
47.Kd3 c1Q 48.Rxc1 Rg2 49.g4 Rh2
50.Rc7+ Ke6 51.h5 1/2-1/2

Coleman,Maxx - Davis,Charles
[E06]

Kansas Open (1), 14.07.2007

1.Nf3 Nf6 2.d4 d5 3.c4 e6 4.Nc3 Be7 5.g3
 0-0 6.Bg2 Nbd7 7.cxd5 exd5 8.0-0 Nb6
 9.a4 a5 10.Ne5 c6 11.h3 Nfd7 12.Nd3 Nc4
 13.b3 Nd6 14.Bf4 Nf5 15.e3!? Nf6
 [15...g5!?] 16.Rc1 Nd6 17.g4 Nfe4 18.Ne2
 f5 19.f3 Nf6 20.Ng3 fxg4 21.hxg4 Nfe8
 22.Be5 Nf7 23.f4 Bh4 24.Nh1 Qd7 25.Bf3
 Ned6 26.Rc2 Bd8 27.Rh2 Ne4 28.Nhf2
 Nfd6 29.Qc2 g6 30.Kg2 Qe7 31.Rfh1 Rf7
 32.Nc5! Nf6

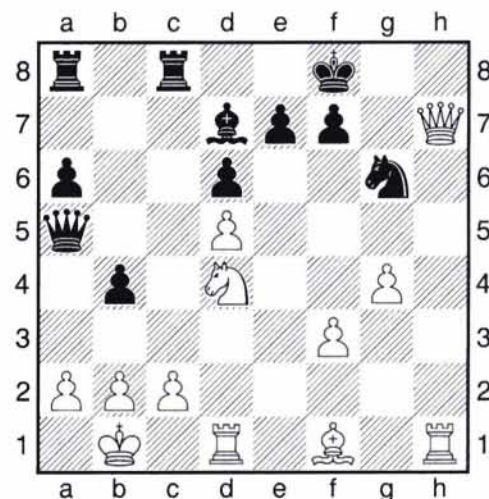


33.Qxg6+ Kf8?? [33...Rg7] 34.Qh6+ Ke8
 35.g5 Nfe4 36.Nfxe4 Nxe4 37.Nxe4 dxe4
 38.Bh5 Bf5 39.Bd6 Qe6 40.Qf8+ Kd7
 41.Bxf7 Qxd6 42.Be8+ Kc7 43.Rxh7+
 Bxh7 44.Rxh7+ Be7 45.Rxe7+ Kb6
 46.Rxb7+ Kxb7 1-0

Trammell,George - Pasik,Ron
[B76]

Kansas Open (2), 14.07.2007

1.e4 c5 2.Nf3 d6 3.d4 cxd4 4.Nxd4 Nf6
 5.Nc3 g6 6.Be3 Bg7 7.f3 0-0 8.Qd2 Nc6
 9.0-0-0 Bd7 10.g4 a6 11.h4 b5 12.h5 Ne5
 13.Bh6 b4 14.Nd5 Nxd5 15.exd5 Qa5
 16.Kb1 Rfc8 17.hxg6 Nxc6 18.Bxc7 Kxc7
 19.Qh6+ Kg8 20.Qxh7+ Kf8



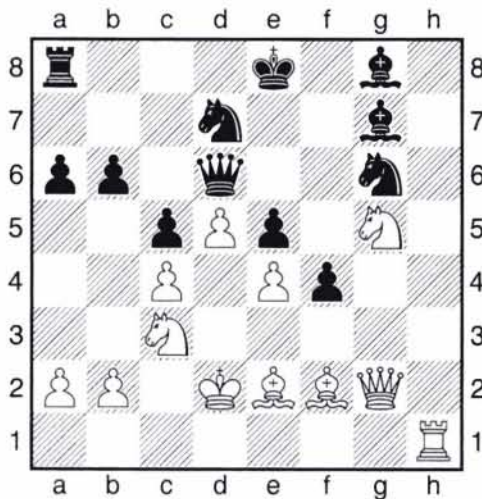
21.Ne6+ Bxe6 22.dxe6 Ke8 23.Qg8+ 1-0

I have been informed that this issue would not be complete without this game.

Coker,Laurence - Johnson,Duane
[B32]

Kansas Open (2), 14.07.2007

1.e4 c5 2.Nf3 Nc6 3.d4 e6 4.d5 Nb8 5.c4
 g6 6.Be2 d6 7.0-0 Bg7 8.Qc2 e5 9.Nc3 b6
 10.Ne1 h6 11.f4 f5 12.Bd3 Ne7 13.Nf3 a6
 14.fxe5 dxe5 15.Bd2 f4 16.Kf2 g5 17.h3
 Ng6 18.Rh1 Nh4 19.Rag1 Qf6 20.Ke2 g4
 21.hxg4 Bxg4 22.Be1 Ng6 23.Bf2 h5
 24.Kd2 h4 25.Be2 h3 26.gxh3 Rxh3
 27.Rxh3 Bxh3 28.Qd1 Qd6? 29.Rh1? Be6
 30.Qg1 Bf7 31.Ng5 Bg8? 32.Qg2? Nd7?
 See the diagram on the next page. 33.Ne6!
 Kf7 34.Rf1? [34.Bh5] 34...Bh7 35.Bh5 Ndf8
 36.Nxf8 Rxf8 37.Bxg6+ Bxg6 38.Bh4 Bh6
 39.Bg5 Rh8 40.Bxh6 Rxh6 41.Rh1 Bh5
 42.Qg5 Qg6 43.Rg1 f3?! 44.Qxg6+ Bxg6
 45.Ke3 Bh5? [45...Rh2] 46.Rf1 Rf6 47.Rf2
 Rd6 48.Nb1 b5 49.b3 b4 50.Nd2 a5
 51.Nxf3 Bxf3 52.Rxf3+ Rf6 53.Rxf6+ Kxf6
 54.Kf3 Kg5 55.Kg3 Kf6 56.Kh4 Kg6
 57.Kg4 1-0



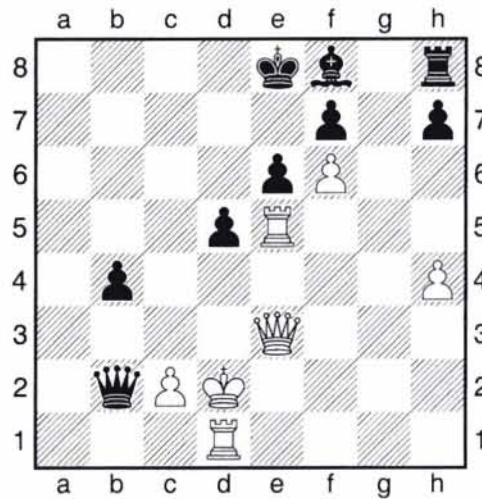
Games from the Temple Emmanu-el Open

When John Pritchard starts to play like this consistently, he will be one of the top players in the state.

Pritchard, John (1531) – Brownscombe, Tom (2200) [B81]

Temple Emmanuel, 05.08.2007

1.e4 c5 2.Nf3 d6 3.d4 cxd4 4.Nxd4 Nf6
5.Nc3 e6 6.g4 a6 7.Be3 Nc6 8.g5 Nd7 9.h4
Qc7 10.Qd2 Nde5 11.Be2 b5 12.0-0-0 Bb7
[12...b4!?] 13.f4 Nxd4 14.Bxd4 Nc6 15.Be3
Be7 [15...Qa5?] 16.f5 Ne5 [16...b4 17.fxe6
fxe6?] 17.Rhf1 b4 18.Na4 Bxe4 19.Nb6
Rb8 20.f6 gxf6 21.gxf6 Bf8 22.Rf4 d5?
[22...Qc6!?] 23.Bxa6 Rxb6 24.Bxb6 Qxb6
25.Rxe4 Qxa6 26.Rxe5 Qxa2 27.Qe3 Qa1+
28.Kd2 Qxb2 See the diagram at the top of
the next column. 29.Rxe6+ fxe6 30.Qxe6+
Kd8 31.Qxd5+ Kc7 32.Qc4+ Kb6 33.Qe6+
Kc5 34.Qc8+ Kb6 35.Qb8+ Kc6 36.Qc8+
Kb6 37.Qb8+ Kc6 38.Qc8+ Kb6 1/2-1/2



Jason Wawrzaszek had a great tournament. In the first round, he punishes an opponent who tries an irregular opening.

Wawrzaszek, Jason - Claman, Tom [C65]

Temple Emmanuel, 05.08.2007

1.e4 e5 2.Nf3 Nc6 3.Bb5 Nf6 4.0-0 Ng4
5.d4 exd4 6.h3 h5 7.Bxc6 dxc6 8.Bf4 c5
9.Qd3 Bd6 10.e5 Be7 11.hxg4 hxg4
12.Nh2 Bg5 13.Bg3 b6 14.c3 a5 15.Qe4
Ra7 16.Rd1 g6 17.cxd4 Bb7 18.Qxg4 Qd5
19.Nf3 Bh6 20.Nc3 Qc4 21.Bf4 Bxf4
22.Qxf4 Bxf3 23.Qxf3 cxd4 24.Nd5 0-0
25.Ne7+ Kg7 26.Qf6+ Kh6 27.Nf5+ 1-0

In round 2, he outplays a talented youngster.

Liu, Kenny - Wawrzaszek, Jason [B34]

Temple Emmanuel, 05.08.2007

1.e4 c5 2.Nf3 Nc6 3.d4 cxd4 4.Nxd4 g6
5.Nc3 Bg7 6.Be3 Nf6 7.f3 0-0 8.Qd2 d5
9.0-0-0 dxe4 10.Nxe4 Nxe4 11.fxe4 Bg4
12.Nxc6 bxc6 13.Qxd8 Rfxd8 14.Rxd8+
Rxd8 15.Bd3 Rb8 16.c3 Be6 17.Bxa7 Ra8
18.Bc5 Rxa2 19.Bxe7 Ra1+ 20.Bb1 f5
21.Kd2 Bh6+ 22.Kd3 fxe4+ 23.Kd4 e3
24.g4 Bxg4 25.Be4 Rxh1 26.Bxh1 e2

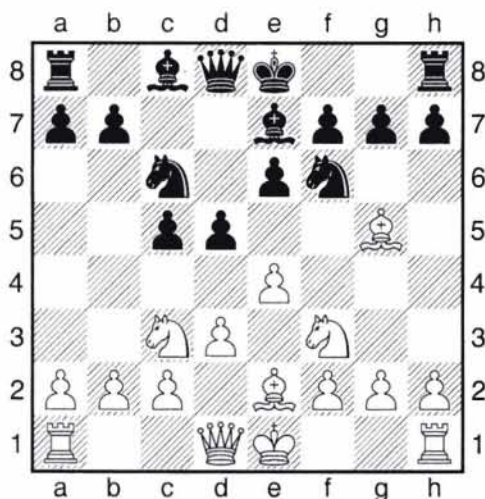
27.Bh4 Bd2 28.Bxc6 e1Q 29.Bxe1 Bxe1
30.b4 Bf2+ 31.Kc4 Be2+ 32.Kb3 Bg1 33.h3
Bf1 34.Bd7 Kf7 35.c4 Ke7 36.Bc8 Kd8
37.Be6 Kc7 38.c5 Bb5 39.Bg4 Bd4 40.Be6
g5 41.Bf5 h6 42.Bg4 Kd8 43.Bf5 h5
44.Bg6 Be8 45.Bf5 Bd7 46.Bg6 h4 47.Kc4
Bf2 48.b5 Bxh3 49.b6 Kd7 50.Be4 Bf1+
51.Kd5 Bb5 52.Bf5+ Kd8 53.b7 Kc7
54.Bc8 Bc6+ 55.Kc4 Bxb7 56.Bxb7 Kxb7
0-1

In this game, KCA president Ron Pasik makes a mistake in the opening and never recovers.

Pasik,Ron - Wawrzaszek,Jason [B40]

Temple Emmanuel, 05.08.2007

1.e4 c5 2.Nf3 e6 3.Nc3 Nc6 4.d3 Nf6 5.Bg5
Be7 6.Be2 d5



7.e5?! Ng4 8.Bxe7 Qxe7 9.d4 cxd4
10.Nxd4 Ngxe5 11.Qd2 Qb4 12.Nxc6 Nxc6
13.0-0 d4 14.Ne4 Qxd2 15.Nxd2 0-0 16.Nf3
a6 17.Bd3 e5 18.Rfe1 f6 19.Bc4+ Kh8
20.h3 Re8 21.Rad1 Bf5 22.c3 dxc3
23.bxc3 Rad8 24.Nh4 Bc2 25.Rc1 Bd3
26.Bxd3 Rxd3 27.Rb1 Na5 28.c4 Rc8

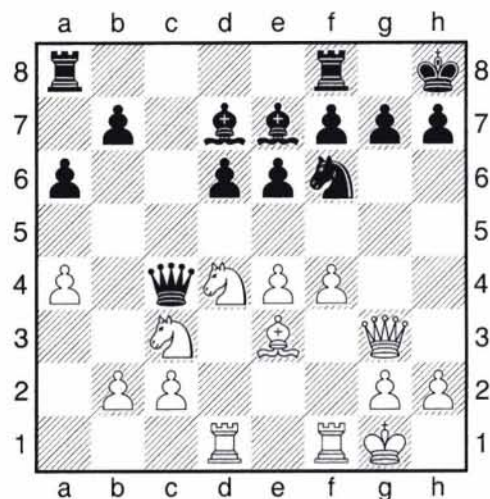
29.Rec1 Rd4 30.Nf5 Rd2 31.c5 g6 32.Nd6
Rc7 33.Ne4 Rd5 34.Nxf6 Rdxc5 0-1

In this final round game the state champion is lucky to escape with a draw.

Wawrzaszek,Jason (1830) - Brownscombe,Tom (2200) [B85]

Temple Emmanuel, 05.08.2007

1.e4 c5 2.Nf3 d6 3.d4 cxd4 4.Nxd4 Nf6
5.Nc3 e6 6.Be2 Be7 7.Be3 0-0 8.0-0 a6 9.f4
Qc7 10.a4 Nc6 11.Bf3 Na5 12.Be2 Bd7
13.Qe1 Nc4 14.Bxc4 Qxc4 15.Qg3 Kh8
16.Rad1



16...Bxa4 Since I needed a win in this game to win the tournament, I decided to grab the pawn and try to survive the complications.
17.e5 dxe5?! [17...Ne8] 18.fxe5 Ng8
19.Ne4?! [19.Rf4±] 19...Bc6?! [19...Bxc2
20.Rc1 Qxf1+ 21.Rxf1 Bxe4±] 20.Ng5
[20.b3!?] 20...Bxg5 21.Bxg5 f6 22.exf6
Nxf6 23.b3 Qd5 [23...Qc5] 24.c4 Qd7
25.Qh4 Ne4 26.Be3 e5 27.Nxc6 Qxc6?!
[27...Rxf1+= 28.Rxf1 Qd3!?] 28.Rxf8+ Rxf8
29.Rd8 Kg8 [29...Rg8=] 30.Rxf8+ Kxf8
31.Qxh7 Nf6 32.Qf5 Qe4 33.Qxe4 Nxe4
34.Kf1 Ke7 35.Ke2 Ke6 36.Kf3 Nd6 37.g4
b5? 38.c5 Ne8 39.b4 A time scramble ensued, ending in a draw.

THE

END